


# Anti-SNM1A antibody ab226003

2 Images

### Overview

<b>Product name</b>	Anti-SNM1A antibody
<b>Description</b>	Rabbit polyclonal to SNM1A
<b>Host species</b>	Rabbit
<b>Tested applications</b>	<b>Suitable for:</b> WB, IP
<b>Species reactivity</b>	<b>Reacts with:</b> Human <b>Predicted to work with:</b> Gorilla 
<b>Immunogen</b>	Synthetic peptide within Human SNM1A aa 425-475. The exact sequence is proprietary. (NP_055696.3). Database link: <a href="#">Q6PJP8</a>
<b>Positive control</b>	WB: HEK-293T, HeLa and Jurkat whole cell lysate ( <a href="#">ab7899</a> ). IP: HEK-293T whole cell lysate.
<b>General notes</b>	<p>The Life Science industry has been in the grips of a reproducibility crisis for a number of years. Abcam is leading the way in addressing this with our range of recombinant monoclonal antibodies and knockout edited cell lines for gold-standard validation. Please check that this product meets your needs before purchasing.</p> <p>If you have any questions, special requirements or concerns, please send us an inquiry and/or contact our Support team ahead of purchase. Recommended alternatives for this product can be found below, along with publications, customer reviews and Q&amp;As</p>

### Properties

<b>Form</b>	Liquid
<b>Storage instructions</b>	Shipped at 4°C. Store at +4°C short term (1-2 weeks). Upon delivery aliquot. Store at -20°C long term. Avoid freeze / thaw cycle.
<b>Storage buffer</b>	pH: 7 Preservative: 0.09% Sodium azide Constituent: Tris citrate/phosphate  pH 7 to 8
<b>Purity</b>	Immunogen affinity purified
<b>Purification notes</b>	ab226003 was affinity purified using an epitope specific to SNM1A immobilized on solid support
<b>Clonality</b>	Polyclonal

Isotype

IgG

## Applications

### The Abpromise guarantee

Our **Abpromise guarantee** covers the use of ab226003 in the following tested applications.

The application notes include recommended starting dilutions; optimal dilutions/concentrations should be determined by the end user.

Application	Abreviews	Notes
WB		1/2000 - 1/10000. Predicted molecular weight: 116 kDa.
IP		Use at 2-10 µg/mg of lysate.

## Target

### Function

May be required for DNA interstrand cross-link repair. Also required for checkpoint mediated cell cycle arrest in early prophase in response to mitotic spindle poisons.

### Tissue specificity

Expressed in brain, heart, kidney, liver, pancreas, placenta and skeletal muscle.

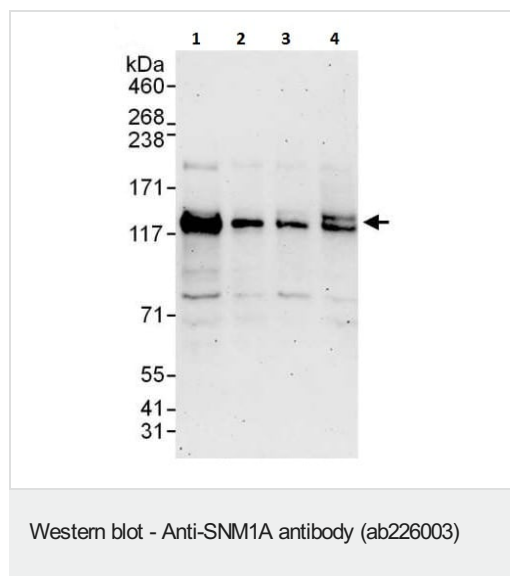
### Sequence similarities

Belongs to the DNA repair metallo-beta-lactamase (DRMBL) family.

### Cellular localization

Nucleus. In some cells it may be found in typically 1 or 2 discrete nuclear aggregates of unknown function which also contain TP53BP1. Also found in multiple discrete nuclear foci which increase in number following treatment with ionizing radiation or interstrand cross-linking agents. These foci overlap with those formed by the MRN complex (composed of MRE11A, RAD50 and NBN) and BRCA1.

## Images



**All lanes :** Anti-SNM1A antibody (ab226003) at 0.1 µg/ml

**Lane 1 :** HEK-293T (human epithelial cell line from embryonic kidney transformed with large T antigen) whole cell lysate at 50 µg

**Lane 2 :** HEK-293T whole cell lysate at 15 µg

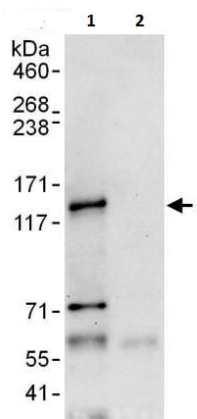
**Lane 3 :** HeLa (human epithelial cell line from cervix adenocarcinoma) whole cell lysate at 50 µg

**Lane 4 :** Jurkat (human T cell leukemia cell line from peripheral blood) whole cell lysate at 50 µg

Developed using the ECL technique.

**Predicted band size:** 116 kDa

**Exposure time:** 3 minutes



Immunoprecipitation - Anti-SNM1A antibody  
(ab226003)

SNM1A was immunoprecipitated from HEK-293T (human epithelial cell line from embryonic kidney transformed with large T antigen) whole cell lysate (1 mg for IP, 20% of IP loaded) with ab226003 at 6 µg/mg lysate. Western blot was performed from the immunoprecipitate using ab226003 at 1 µg/ml.

Lane 1: ab226003 IP in HEK-293T whole cell lysate.

Lane 2: Control IgG IP in HEK-293T whole cell lysate.

Detection: Chemiluminescence with exposure time of 30 seconds.

**Please note:** All products are "FOR RESEARCH USE ONLY. NOT FOR USE IN DIAGNOSTIC PROCEDURES"

### Our Abpromise to you: Quality guaranteed and expert technical support

- Replacement or refund for products not performing as stated on the datasheet
- Valid for 12 months from date of delivery
- Response to your inquiry within 24 hours
- We provide support in Chinese, English, French, German, Japanese and Spanish
- Extensive multi-media technical resources to help you
- We investigate all quality concerns to ensure our products perform to the highest standards

If the product does not perform as described on this datasheet, we will offer a refund or replacement. For full details of the Abpromise, please visit <https://www.abcam.com/abpromise> or contact our technical team.

### Terms and conditions

- Guarantee only valid for products bought direct from Abcam or one of our authorized distributors