

Anti-SNPH antibody ab69992

[1 References](#) [3 Images](#)

Overview

Product name	Anti-SNPH antibody
Description	Rabbit polyclonal to SNPH
Host species	Rabbit
Tested applications	Suitable for: ICC/IF, IHC-P, WB
Species reactivity	Reacts with: Human
Immunogen	Synthetic peptide within Human SNPH aa 80-130 (N terminal). The exact sequence is proprietary.
Positive control	Human brain tissue lysate
General notes	<p>The Life Science industry has been in the grips of a reproducibility crisis for a number of years. Abcam is leading the way in addressing this with our range of recombinant monoclonal antibodies and knockout edited cell lines for gold-standard validation. Please check that this product meets your needs before purchasing.</p> <p>If you have any questions, special requirements or concerns, please send us an inquiry and/or contact our Support team ahead of purchase. Recommended alternatives for this product can be found below, along with publications, customer reviews and Q&As</p>

Properties

Form	Liquid
Storage instructions	Shipped at 4°C. Store at +4°C.
Storage buffer	pH: 7.2 Preservative: 0.02% Sodium azide Constituent: PBS
Purity	Immunogen affinity purified
Clonality	Polyclonal
Isotype	IgG

Applications

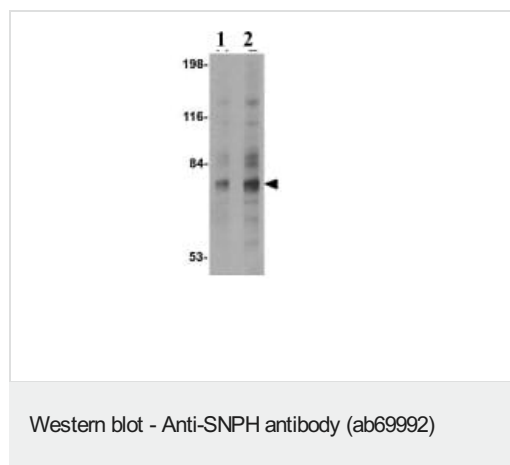
The Abpromise guarantee Our **Abpromise guarantee** covers the use of ab69992 in the following tested applications. The application notes include recommended starting dilutions; optimal dilutions/concentrations should be determined by the end user.

Application	Abreviews	Notes
ICC/IF		Use a concentration of 20 µg/ml.
IHC-P		Use a concentration of 5 µg/ml.
WB		Use a concentration of 2 - 4 µg/ml. Detects a band of approximately 75 kDa (predicted molecular weight: 58 kDa).

Target

Function	Inhibits SNARE complex formation by absorbing free syntaxin-1.
Tissue specificity	Brain specific. Found in synapses.
Cellular localization	Membrane. Cell junction > synapse > synaptosome.

Images



Lane 1 : Anti-SNPH antibody (ab69992) at 2 µg/ml

Lane 2 : Anti-SNPH antibody (ab69992) at 4 µg/ml

All lanes : Human brain tissue lysate

Lysates/proteins at 15 µg per lane.

Predicted band size: 58 kDa

Observed band size: 75 kDa

Additional bands at: 115 kDa, 120 kDa, 57 kDa, 65 kDa, 70 kDa, 84 kDa. We are unsure as to the identity of these extra bands.



ab69992 at 5 µg/ml staining SNPH in human brain tissue section by Immunohistochemistry (Formalin/ PFA fixed paraffin-embedded tissue sections).

Immunocytochemistry/ Immunofluorescence - Anti-SNPH antibody (ab69992)

Immunofluorescence of Syntaphilin in Human Brain cells using ab69992 at 20 ug/ml.

Please note: All products are "FOR RESEARCH USE ONLY. NOT FOR USE IN DIAGNOSTIC PROCEDURES"

Our Abpromise to you: Quality guaranteed and expert technical support

- Replacement or refund for products not performing as stated on the datasheet
- Valid for 12 months from date of delivery
- Response to your inquiry within 24 hours
- We provide support in Chinese, English, French, German, Japanese and Spanish
- Extensive multi-media technical resources to help you
- We investigate all quality concerns to ensure our products perform to the highest standards

If the product does not perform as described on this datasheet, we will offer a refund or replacement. For full details of the Abpromise, please visit <https://www.abcam.com/abpromise> or contact our technical team.

Terms and conditions

- Guarantee only valid for products bought direct from Abcam or one of our authorized distributors