


## Product datasheet

### Anti-SNRP70/U1-70K antibody ab83306

★★★★★ [1 Abreviews](#) [19 References](#) [4 Images](#)

#### Overview

<b>Product name</b>	Anti-SNRP70/U1-70K antibody
<b>Description</b>	Rabbit polyclonal to SNRP70/U1-70K
<b>Host species</b>	Rabbit
<b>Specificity</b>	Replenishment batches of ab83306 are tested in WB. Previous batches were additionally validated in ICC/IF and IHC-P. These applications are still expected to work and are covered by our Abpromise guarantee.
<b>Tested applications</b>	<b>Suitable for:</b> IHC-P, ICC/IF, WB
<b>Species reactivity</b>	<b>Reacts with:</b> Mouse, Rat, Human <b>Predicted to work with:</b> Cow 
<b>Immunogen</b>	Synthetic peptide. This information is proprietary to Abcam and/or its suppliers.
<b>Positive control</b>	WB: HeLa; Jurkat; HepG2; HEK293; CaCo2; MCF7; SHSY5Y; NIH3T3; MEF1 whole cell lysates. Mouse and Rat testis tissue lysates. IHC-P: Normal Human Colon Tissue ICC/IF: HeLa
<b>General notes</b>	<p>The Life Science industry has been in the grips of a reproducibility crisis for a number of years. Abcam is leading the way in addressing this with our range of recombinant monoclonal antibodies and knockout edited cell lines for gold-standard validation. Please check that this product meets your needs before purchasing.</p> <p>If you have any questions, special requirements or concerns, please send us an inquiry and/or contact our Support team ahead of purchase. Recommended alternatives for this product can be found below, along with publications, customer reviews and Q&amp;As</p>

#### Properties

<b>Form</b>	Liquid
<b>Storage instructions</b>	Shipped at 4°C. Store at +4°C short term (1-2 weeks). Upon delivery aliquot. Store at -20°C or -80°C. Avoid freeze / thaw cycle.
<b>Storage buffer</b>	<p>pH: 7.40</p> <p>Preservative: 0.02% Sodium azide</p> <p>Constituent: PBS</p> <p>Batches of this product that have a concentration &lt; 1mg/ml may have BSA added as a stabilising agent. If you would like information about the formulation of a specific lot, please contact our</p>

scientific support team who will be happy to help.

<b>Purity</b>	Immunogen affinity purified
<b>Clonality</b>	Polyclonal
<b>Isotype</b>	IgG

## Applications

**The Abpromise guarantee** Our **Abpromise guarantee** covers the use of ab83306 in the following tested applications.

The application notes include recommended starting dilutions; optimal dilutions/concentrations should be determined by the end user.

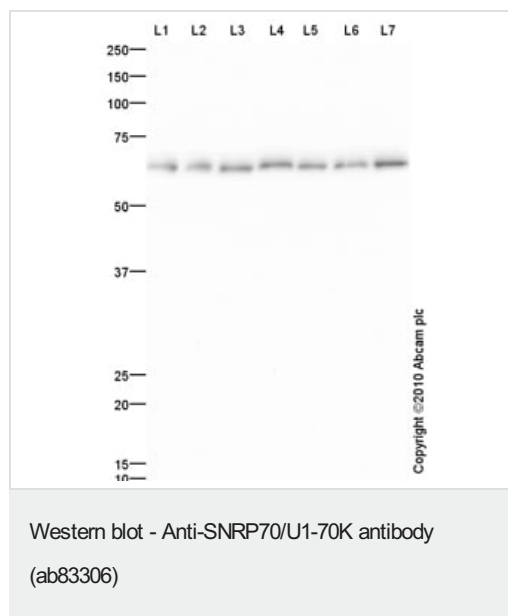
Application	Abreviews	Notes
<b>IHC-P</b>		Use a concentration of 1 µg/ml.
<b>ICC/IF</b>		Use a concentration of 1 µg/ml.
<b>WB</b>		Use a concentration of 1 µg/ml. Detects a band of approximately 63 kDa (predicted molecular weight: 51 kDa).

## Target

**Relevance** SNRP70 is an RNA-binding protein that is a specific component of the U1 small nuclear ribonucleoprotein complex and constitutes the major anti-(U1) RNP autoimmune antigen. SNRP70 contains 1 RRM (RNA recognition motif) domain and mediates the splicing of pre-mRNA by binding to the loop I region of U1-snRNA.

**Cellular localization** Nuclear

## Images



**All lanes :** Anti-SNRP70/U1-70K antibody (ab83306) at 1 µg/ml

**Lane 1 :** HeLa (Human epithelial carcinoma cell line) Whole Cell Lysate

**Lane 2 :** Jurkat (Human T cell lymphoblast-like cell line) Whole Cell Lysate

**Lane 3 :** HepG2 (Human hepatocellular liver carcinoma cell line) Whole Cell Lysate

**Lane 4 :** HEK293 (Human embryonic kidney cell line) Whole Cell Lysate

**Lane 5 :** Caco 2 (Human colonic carcinoma cell line) Whole Cell Lysate

**Lane 6 :** MCF7 (Human breast adenocarcinoma cell line) Whole Cell Lysate

**Lane 7 :** SHSY-5Y (Human neuroblastoma cell line) Whole Cell Lysate

Lysate

Lysates/proteins at 10 µg per lane.

### Secondary

**All lanes :** Goat polyclonal to Rabbit IgG - H&L - Pre-Adsorbed (HRP) at 1/3000 dilution

Developed using the ECL technique.

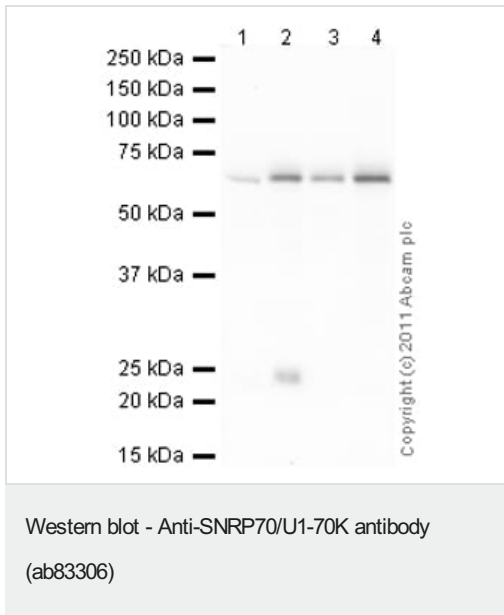
Performed under reducing conditions.

**Predicted band size:** 51 kDa

**Observed band size:** 63 kDa

**Exposure time:** 2 minutes

The 63 kDa band observed is comparable to the molecular weight seen with other commercially available antibodies to Human U1 small nuclear ribonucleoprotein 70 kDa.



**All lanes :** Anti-SNRP70/U1-70K antibody (ab83306) at 1 µg/ml

**Lane 1 :** Testis (Rat) Tissue Lysate

**Lane 2 :** NIH 3T3 (Mouse embryonic fibroblast cell line) Whole Cell Lysate

**Lane 3 :** Testis (Mouse) Tissue Lysate

**Lane 4 :** MEF1 (Mouse embryonic fibroblast cell line) Whole Cell Lysate

Lysates/proteins at 10 µg per lane.

### Secondary

**All lanes :** Goat Anti-Rabbit IgG H&L (HRP) preadsorbed (**ab97080**) at 1/5000 dilution

Developed using the ECL technique.

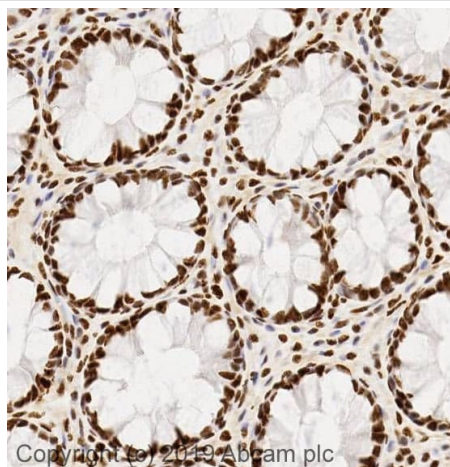
Performed under reducing conditions.

**Predicted band size:** 51 kDa

**Observed band size:** 63 kDa

**Additional bands at:** 24 kDa. We are unsure as to the identity of these extra bands.

**Exposure time:** 1 minute

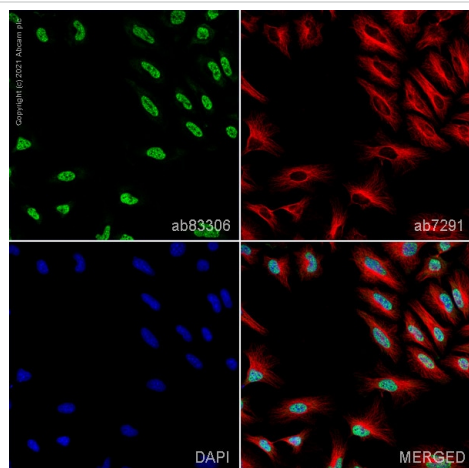


Immunohistochemistry (Formalin/PFA-fixed paraffin-embedded sections) - Anti-SNRP70/U1-70K antibody (ab83306)

IHC image of SNRP70/U1-70K antibody staining in a section of formalin-fixed paraffin-embedded normal human colon\* performed on a Leica BOND™ system using the standard protocol. The section was pre-treated using heat mediated antigen retrieval with sodium citrate buffer (pH6, epitope retrieval solution 1) for 20mins. The section was then incubated with ab83306, 1µg/ml, for 15 mins at room temperature and detected using an HRP conjugated compact polymer system. DAB was used as the chromogen. The section was then counterstained with haematoxylin and mounted with DPX.

For other IHC staining systems (automated and non-automated) customers should optimize variable parameters such as antigen retrieval conditions, primary antibody concentration and antibody incubation times.

*\*Tissue obtained from the Human Research Tissue Bank, supported by the NIHR Cambridge Biomedical Research Centre*



Immunocytochemistry/ Immunofluorescence - Anti-SNRP70/U1-70K antibody (ab83306)

ab83306 staining SNRP70/U1-70K in HeLa cells. The cells were fixed with 100% methanol (5 min), permeabilized with 0.1% PBS-Triton X-100 for 5 minutes and then blocked with 1% BSA/10% normal goat serum/0.3M glycine in 0.1% PBS-Tween for 1h. The cells were then incubated overnight at 4°C with ab83306 at 1µg/ml and **ab7291**, Mouse monoclonal [DM1A] to alpha Tubulin - Loading Control. Cells were then incubated with **ab150081**, Goat polyclonal Secondary Antibody to Rabbit IgG - H&L (Alexa Fluor® 488), pre-adsorbed at 1/1000 dilution (shown in green) and **ab150080**, Goat polyclonal Secondary Antibody to Rabbit IgG - H&L (Alexa Fluor® 594) at 1/1000 dilution (shown in pseudocolour red). Nuclear DNA was labelled with DAPI (shown in blue).

Also suitable in cells fixed with 4% paraformaldehyde (10 min).

Image was acquired with a high-content analyser (Operetta CLS, Perkin Elmer) and a maximum intensity projection of confocal sections is shown.

**Please note:** All products are "FOR RESEARCH USE ONLY. NOT FOR USE IN DIAGNOSTIC PROCEDURES"

### **Our Abpromise to you: Quality guaranteed and expert technical support**

---

- Replacement or refund for products not performing as stated on the datasheet
- Valid for 12 months from date of delivery
- Response to your inquiry within 24 hours
  
- We provide support in Chinese, English, French, German, Japanese and Spanish
- Extensive multi-media technical resources to help you
- We investigate all quality concerns to ensure our products perform to the highest standards

If the product does not perform as described on this datasheet, we will offer a refund or replacement. For full details of the Abpromise, please visit <https://www.abcam.com/abpromise> or contact our technical team.

### **Terms and conditions**

---

- Guarantee only valid for products bought direct from Abcam or one of our authorized distributors