



Product datasheet

Anti-Somatostatin Receptor 3/SSTR3 antibody ab28680

[3 References](#) [1 Image](#)

Overview

Product name	Anti-Somatostatin Receptor 3/SSTR3 antibody
Description	Rabbit polyclonal to Somatostatin Receptor 3/SSTR3
Host species	Rabbit
Specificity	Ab28680 detects Somatostatin Receptor 3/SSTR3.
Tested applications	Suitable for: IHC-P
Species reactivity	Reacts with: Human
Immunogen	Synthetic peptide corresponding to Human Somatostatin Receptor 3/SSTR3 aa 385-393. Sequence: C-QERPPSRVA
	<div>  Run BLAST with </div> <div>  Run BLAST with </div>
Positive control	Human pancreatic islands. HeLa lysates.
General notes	<p>The Life Science industry has been in the grips of a reproducibility crisis for a number of years. Abcam is leading the way in addressing this with our range of recombinant monoclonal antibodies and knockout edited cell lines for gold-standard validation. Please check that this product meets your needs before purchasing.</p> <p>If you have any questions, special requirements or concerns, please send us an inquiry and/or contact our Support team ahead of purchase. Recommended alternatives for this product can be found below, along with publications, customer reviews and Q&As</p>

Properties

Form	Liquid
Storage instructions	Shipped at 4°C. Upon delivery aliquot and store at -20°C. Avoid freeze / thaw cycles.
Storage buffer	Preservative: 0.05% Sodium azide Constituent: Whole serum
Purity	Whole antiserum
Clonality	Polyclonal
Isotype	IgG

Applications

Applications

The Abpromise guarantee

Our **Abpromise guarantee** covers the use of ab28680 in the following tested applications.

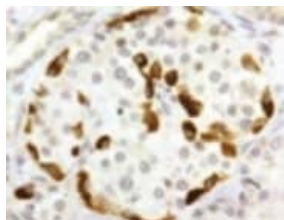
The application notes include recommended starting dilutions; optimal dilutions/concentrations should be determined by the end user.

Application	Abreviews	Notes
IHC-P		1/2500.

Target

Function	Receptor for somatostatins-14 and -28. This receptor is coupled via pertussis toxin sensitive G proteins to inhibition of adenylyl cyclase.
Tissue specificity	Brain, pituitary and pancreas.
Sequence similarities	Belongs to the G-protein coupled receptor 1 family.
Post-translational modifications	Phosphorylated. Phosphorylation increases upon somatostatin binding.
Cellular localization	Cell membrane. Internalized into endoplasmic vesicles upon somatostatin-stimulation.

Images



ab28680, at a dilution of 1/2500, staining Human pancreatic islets by Immunohistochemistry.

Immunohistochemistry (Formalin/PFA-fixed paraffin-embedded sections) - Anti-Somatostatin Receptor 3/SSTR3 antibody (ab28680)

Please note: All products are "FOR RESEARCH USE ONLY. NOT FOR USE IN DIAGNOSTIC PROCEDURES"

Our Abpromise to you: Quality guaranteed and expert technical support

- Replacement or refund for products not performing as stated on the datasheet
- Valid for 12 months from date of delivery
- Response to your inquiry within 24 hours
- We provide support in Chinese, English, French, German, Japanese and Spanish
- Extensive multi-media technical resources to help you
- We investigate all quality concerns to ensure our products perform to the highest standards

If the product does not perform as described on this datasheet, we will offer a refund or replacement. For full details of the Abpromise,

please visit <https://www.abcam.com/abpromise> or contact our technical team.

Terms and conditions

- Guarantee only valid for products bought direct from Abcam or one of our authorized distributors