

Product datasheet

Anti-Sorbitol Dehydrogenase antibody [EPR15857] ab189248

Recombinant RabMAb

[2 References](#) [4 Images](#)

Overview

Product name	Anti-Sorbitol Dehydrogenase antibody [EPR15857]
Description	Rabbit monoclonal [EPR15857] to Sorbitol Dehydrogenase
Host species	Rabbit
Tested applications	Suitable for: IP, WB
Species reactivity	Reacts with: Mouse, Rat, Human
Immunogen	Synthetic peptide. This information is proprietary to Abcam and/or its suppliers.
Positive control	Human fetal kidney, human fetal liver, mouse kidney, mouse spleen, rat kidney, C6, HeLa, PC-3 cell lysates,
General notes	<p>This product is a recombinant monoclonal antibody, which offers several advantages including:</p> <ul style="list-style-type: none">- High batch-to-batch consistency and reproducibility- Improved sensitivity and specificity- Long-term security of supply- Animal-free production <p>For more information see here.</p> <p>Our RabMAb[®] technology is a patented hybridoma-based technology for making rabbit monoclonal antibodies. For details on our patents, please refer to RabMAb[®] patents.</p>

Properties

Form	Liquid
Storage instructions	Shipped at 4°C. Store at +4°C short term (1-2 weeks). Upon delivery aliquot. Store at -20°C long term. Avoid freeze / thaw cycle.
Storage buffer	pH: 7.2 Preservative: 0.01% Sodium azide Constituents: 59% PBS, 40% Glycerol (glycerin, glycerine), 0.05% BSA
Purity	Protein A purified
Clonality	Monoclonal
Clone number	EPR15857

Isotype

IgG

Applications

The Abpromise guarantee

Our **Abpromise guarantee** covers the use of ab189248 in the following tested applications.

The application notes include recommended starting dilutions; optimal dilutions/concentrations should be determined by the end user.

Application	Abreviews	Notes
IP		1/50.
WB		1/1000 - 1/20000. Predicted molecular weight: 38 kDa.

Target

Function

Converts sorbitol to fructose. Part of the polyol pathway that plays an important role in sperm physiology. May play a role in the sperm motility by providing an energetic source for sperm.

Tissue specificity

Expressed in kidney and epithelial cells of both benign and malignant prostate tissue. Expressed in epididymis (at protein level).

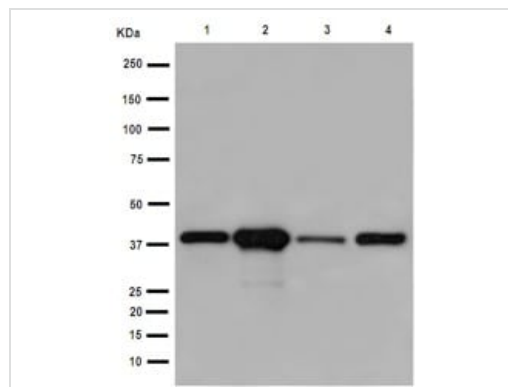
Sequence similarities

Belongs to the zinc-containing alcohol dehydrogenase family.

Cellular localization

Mitochondrion membrane. Cell projection > cilium > flagellum. Associated with mitochondria of the midpiece and near the plasma membrane in the principal piece of the flagellum. Also found in the epididymosome, secreted by the epididymal epithelium and that transfers proteins from the epididymal fluid to the sperm surface.

Images



Western blot - Anti-Sorbitol Dehydrogenase antibody [EPR15857] (ab189248)

All lanes : Anti-Sorbitol Dehydrogenase antibody [EPR15857] (ab189248) at 1/20000 dilution

Lane 1 : Human fetal kidney tissue lysate

Lane 2 : Human fetal liver tissue lysate

Lane 3 : HeLa cell lysate

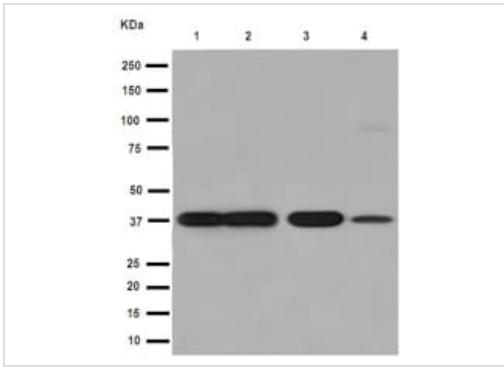
Lane 4 : PC-3 cell lysate

Lysates/proteins at 20 µg per lane.

Secondary

All lanes : Goat Anti-Rabbit IgG, (H+L), Peroxidase conjugated at 1/1000 dilution

Predicted band size: 38 kDa



Western blot - Anti-Sorbitol Dehydrogenase antibody [EPR15857] (ab189248)

All lanes : Anti-Sorbitol Dehydrogenase antibody [EPR15857] (ab189248) at 1/5000 dilution

Lane 1 : Mouse kidney tissue lysate

Lane 2 : Mouse spleen tissue lysate

Lane 3 : Rat kidney tissue lysate

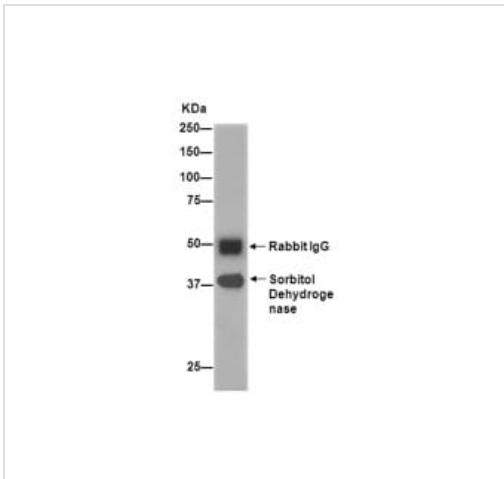
Lane 4 : C6 lysate

Lysates/proteins at 10 µg per lane.

Secondary

All lanes : Goat Anti-Rabbit IgG, (H+L), Peroxidase conjugated at 1/1000 dilution

Predicted band size: 38 kDa



Immunoprecipitation - Anti-Sorbitol Dehydrogenase antibody [EPR15857] (ab189248)

Immunoprecipitation of Human fetal liver labeling Sorbitol Dehydrogenase with ab189248 at 1/50 dilution and Goat Anti-Rabbit IgG, (H+L), Peroxidase conjugated at 1/1000.

Why choose a recombinant antibody?



Research with confidence
Consistent and reproducible results



Long-term and scalable supply
Recombinant technology



Success from the first experiment
Confirmed specificity



Ethical standards compliant
Animal-free production

Anti-Sorbitol Dehydrogenase antibody [EPR15857]
(ab189248)

Please note: All products are "FOR RESEARCH USE ONLY. NOT FOR USE IN DIAGNOSTIC PROCEDURES"

Our Abpromise to you: Quality guaranteed and expert technical support

- Replacement or refund for products not performing as stated on the datasheet
- Valid for 12 months from date of delivery
- Response to your inquiry within 24 hours
- We provide support in Chinese, English, French, German, Japanese and Spanish
- Extensive multi-media technical resources to help you
- We investigate all quality concerns to ensure our products perform to the highest standards

If the product does not perform as described on this datasheet, we will offer a refund or replacement. For full details of the Abpromise, please visit <https://www.abcam.com/abpromise> or contact our technical team.

Terms and conditions

- Guarantee only valid for products bought direct from Abcam or one of our authorized distributors