

Product datasheet

Anti-SORBS1 antibody ab224129

[3 References](#) [8 Images](#)

Overview

Product name	Anti-SORBS1 antibody
Description	Rabbit polyclonal to SORBS1
Host species	Rabbit
Tested applications	Suitable for: IHC-P, ICC/IF, WB
Species reactivity	Reacts with: Human
Immunogen	Recombinant fragment corresponding to Human SORBS1 aa 250-450. Database link: Q9BX66 Run BLAST with Run BLAST with
Positive control	WB: Human tonsil tissue lysate. IHC-P: Human heart muscle, lymph node, cerebral cortex, colon and testis tissue. ICC/IF: U-2 OS cells.
General notes	<p>The Life Science industry has been in the grips of a reproducibility crisis for a number of years. Abcam is leading the way in addressing this with our range of recombinant monoclonal antibodies and knockout edited cell lines for gold-standard validation. Please check that this product meets your needs before purchasing.</p> <p>If you have any questions, special requirements or concerns, please send us an inquiry and/or contact our Support team ahead of purchase. Recommended alternatives for this product can be found below, along with publications, customer reviews and Q&As</p>

Properties

Form	Liquid
Storage instructions	Shipped at 4°C. Store at +4°C short term (1-2 weeks). Upon delivery aliquot. Store at -20°C long term. Avoid freeze / thaw cycle.
Storage buffer	pH: 7.20 Preservative: 0.02% Sodium azide Constituents: 40% Glycerol (glycerin, glycerine), PBS
Purity	Immunogen affinity purified
Clonality	Polyclonal
Isotype	IgG

Applications

The Abpromise guarantee Our **Abpromise guarantee** covers the use of ab224129 in the following tested applications.

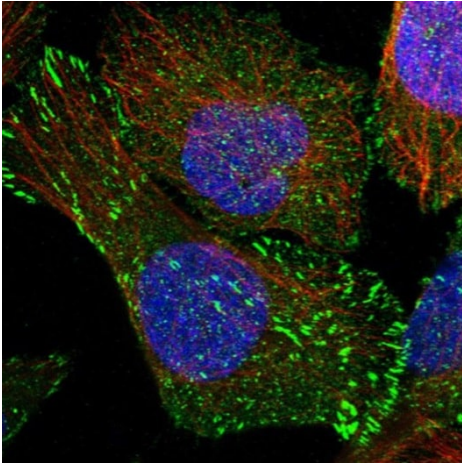
The application notes include recommended starting dilutions; optimal dilutions/concentrations should be determined by the end user.

Application	Abreviews	Notes
IHC-P		1/200 - 1/500. Perform heat mediated antigen retrieval with citrate buffer pH 6 before commencing with IHC staining protocol.
ICC/IF		Use a concentration of 0.25 - 2 µg/ml. Fixation/Permeabilization: PFA/Triton X-100.
WB		Use a concentration of 0.04 - 0.4 µg/ml. Predicted molecular weight: 69,77,87,90,91,95,101,112,127,139,142,143 kDa.

Target

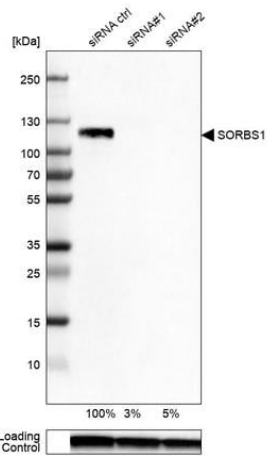
Function	Plays a role in tyrosine phosphorylation of CBL by linking CBL to the insulin receptor. Required for insulin-stimulated glucose transport. Involved in formation of actin stress fibers and focal adhesions.
Tissue specificity	Detected in skeletal muscle (at protein level). Widely expressed with highest levels in heart and skeletal muscle.
Sequence similarities	Contains 3 SH3 domains. Contains 1 SoHo domain.
Post-translational modifications	O-glycosylated.
Cellular localization	Cell junction > adherens junction. Cell membrane. Cytoplasm > cytoskeleton. Cell junction > focal adhesion. Colocalizes with actin stress fibers. Also detected at the plasma membrane and in neuronal intranuclear inclusions. Colocalized with PXN at focal adhesions during myogenic differentiation.

Images



Immunocytochemistry/ Immunofluorescence - Anti-SORBS1 antibody (ab224129)

PFA-fixed, Triton X-100 permeabilized U-2 OS (human bone osteosarcoma epithelial cell line) cells stained for SORBS1 (green) using ab224129 at 4 µg/ml in ICC/IF.



Western blot - Anti-SORBS1 antibody (ab224129)

All lanes : Anti-SORBS1 antibody (ab224129) at 0.4 µg/ml

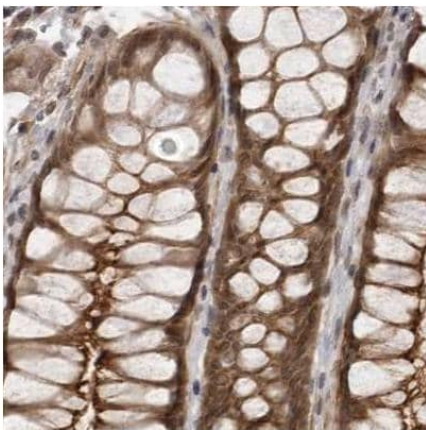
Lane 1 : Caco-2 cells lysates transfected with control siRNA

Lane 2 : Caco-2 cells lysates transfected with target specific siRNA probe #1

Lane 3 : Caco-2 cells lysates transfected with target specific siRNA probe #2

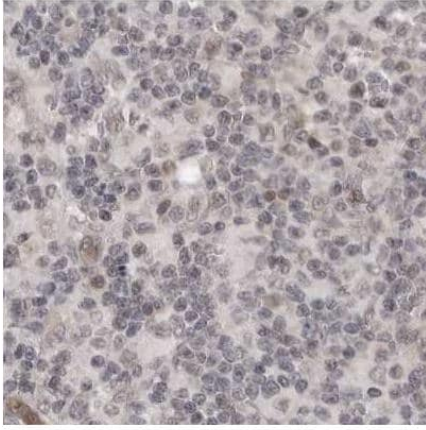
Predicted band size:

69,77,87,90,91,95,101,112,127,139,142,143 kDa



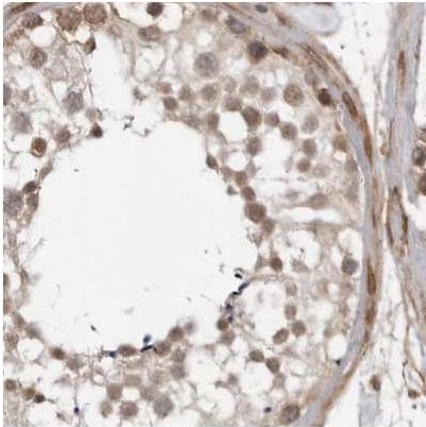
Immunohistochemistry (Formalin/PFA-fixed paraffin-embedded sections) - Anti-SORBS1 antibody (ab224129)

Paraffin-embedded human colon tissue stained for SORBS1 using ab224129 at 1/200 dilution in immunohistochemical analysis.



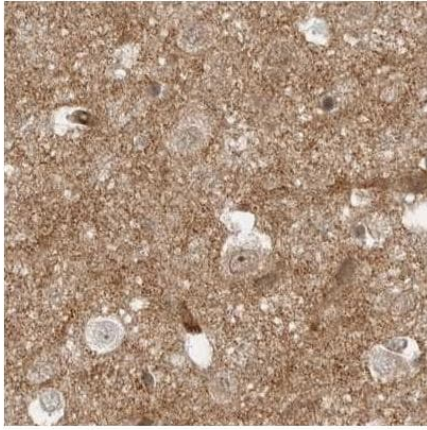
Paraffin-embedded human lymph node tissue stained for SORBS1 using ab224129 at 1/200 dilution in immunohistochemical analysis.

Immunohistochemistry (Formalin/PFA-fixed paraffin-embedded sections) - Anti-SORBS1 antibody (ab224129)



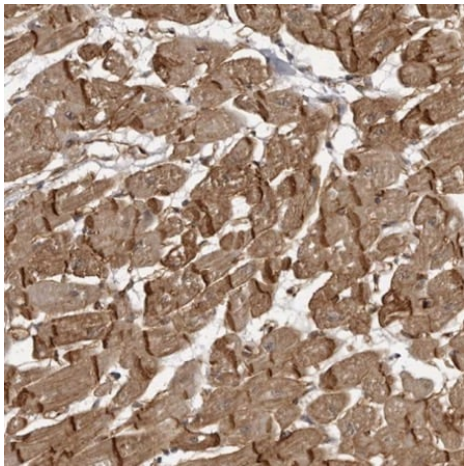
Paraffin-embedded human testis tissue stained for SORBS1 using ab224129 at 1/200 dilution in immunohistochemical analysis.

Immunohistochemistry (Formalin/PFA-fixed paraffin-embedded sections) - Anti-SORBS1 antibody (ab224129)



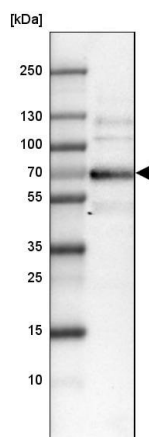
Immunohistochemistry (Formalin/PFA-fixed paraffin-embedded sections) - Anti-SORBS1 antibody (ab224129)

Paraffin-embedded human cerebral cortex tissue stained for SORBS1 using ab224129 at 1/200 dilution in immunohistochemical analysis.



Immunohistochemistry (Formalin/PFA-fixed paraffin-embedded sections) - Anti-SORBS1 antibody (ab224129)

Paraffin-embedded human heart muscle tissue stained for SORBS1 using ab224129 at 1/200 dilution in immunohistochemical analysis.



Western blot - Anti-SORBS1 antibody (ab224129)

Anti-SORBS1 antibody (ab224129) at 1/500 dilution + human tonsil tissue lysate

Developed using the ECL technique.

Predicted band size:

69,77,87,90,91,95,101,112,127,139,142,143 kDa

Please note: All products are "FOR RESEARCH USE ONLY. NOT FOR USE IN DIAGNOSTIC PROCEDURES"

Our Abpromise to you: Quality guaranteed and expert technical support

- Replacement or refund for products not performing as stated on the datasheet
- Valid for 12 months from date of delivery
- Response to your inquiry within 24 hours
- We provide support in Chinese, English, French, German, Japanese and Spanish
- Extensive multi-media technical resources to help you
- We investigate all quality concerns to ensure our products perform to the highest standards

If the product does not perform as described on this datasheet, we will offer a refund or replacement. For full details of the Abpromise, please visit <https://www.abcam.com/abpromise> or contact our technical team.

Terms and conditions

- Guarantee only valid for products bought direct from Abcam or one of our authorized distributors