


Anti-SorLA/SORL1 antibody - C-terminal ab226339

1 Image

Overview

Product name	Anti-SorLA/SORL1 antibody - C-terminal
Description	Rabbit polyclonal to SorLA/SORL1 - C-terminal
Host species	Rabbit
Tested applications	Suitable for: WB
Species reactivity	Reacts with: Human Predicted to work with: Horse, Rhesus monkey 
Immunogen	Synthetic peptide within Human SorLA/SORL1 aa 2164-2214 (C terminal). The exact sequence is proprietary. Database link: Q92673
Positive control	WB: HeLa, HEK-293T and Jurkat whole cell lysates.
General notes	<p>The Life Science industry has been in the grips of a reproducibility crisis for a number of years. Abcam is leading the way in addressing this with our range of recombinant monoclonal antibodies and knockout edited cell lines for gold-standard validation. Please check that this product meets your needs before purchasing.</p> <p>If you have any questions, special requirements or concerns, please send us an inquiry and/or contact our Support team ahead of purchase. Recommended alternatives for this product can be found below, along with publications, customer reviews and Q&As</p>

Properties

Form	Liquid
Storage instructions	Shipped at 4°C. Store at +4°C short term (1-2 weeks). Upon delivery aliquot. Store at -20°C long term. Avoid freeze / thaw cycle.
Storage buffer	pH: 7 Preservative: 0.09% Sodium azide Constituent: Tris citrate/phosphate pH 7 to 8
Purity	Immunogen affinity purified
Purification notes	ab226339 was affinity purified using an epitope specific to SorLA/SORL1 immobilized on solid support.

Clonality	Polyclonal
Isotype	IgG

Applications

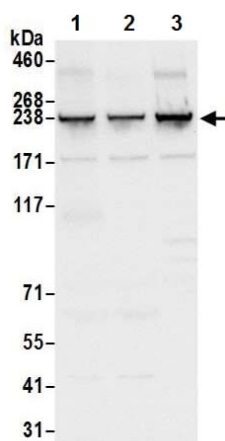
The Abpromise guarantee Our **Abpromise guarantee** covers the use of ab226339 in the following tested applications. The application notes include recommended starting dilutions; optimal dilutions/concentrations should be determined by the end user.

Application	Abreviews	Notes
WB		1/2000 - 1/10000. Predicted molecular weight: 248 kDa.

Target

Function	Likely to be a multifunctional endocytic receptor, that may be implicated in the uptake of lipoproteins and of proteases. Binds LDL, the major cholesterol-carrying lipoprotein of plasma, and transports it into cells by endocytosis. Binds the receptor-associated protein (RAP). Could play a role in cell-cell interaction.
Tissue specificity	Expressed mainly in brain, where it is most abundant in the cerebellum, cerebral cortex and the occipital pole; low expression in the putamen and the thalamus. According to PubMed:9157966, found in spinal cord, testis, liver, kidney and pancreas with detectable levels in placenta, lung and heart. According to PubMed:8940146, expressed in the prostate, ovary, thyroid and spleen, but not found in kidney, liver, lung, skeletal muscle, bone marrow and adrenals.
Sequence similarities	Belongs to the SORL1 family. Contains 5 BNR repeats. Contains 1 EGF-like domain. Contains 6 fibronectin type-III domains. Contains 11 LDL-receptor class A domains. Contains 5 LDL-receptor class B repeats.
Post-translational modifications	The propeptide removed in the N-terminus may be cleaved by furin or homologous proteases.
Cellular localization	Membrane.

Images



Western blot - Anti-SorLA/SORL1 antibody - C-terminal (ab226339)

All lanes : Anti-SorLA/SORL1 antibody - C-terminal (ab226339) at 0.1 µg/ml

Lane 1 : HeLa (human epithelial cell line from cervix adenocarcinoma) whole cell lysate

Lane 2 : HEK-293T (human epithelial cell line from embryonic kidney transformed with large T antigen) whole cell lysate

Lane 3 : Jurkat (human T cell leukemia cell line from peripheral blood) whole cell lysate

Lysates/proteins at 50 µg per lane.

Developed using the ECL technique.

Predicted band size: 248 kDa

Exposure time: 3 seconds

Cell lysates were prepared using NETN lysis buffer.

Please note: All products are "FOR RESEARCH USE ONLY. NOT FOR USE IN DIAGNOSTIC PROCEDURES"

Our Abpromise to you: Quality guaranteed and expert technical support

- Replacement or refund for products not performing as stated on the datasheet
- Valid for 12 months from date of delivery
- Response to your inquiry within 24 hours
- We provide support in Chinese, English, French, German, Japanese and Spanish
- Extensive multi-media technical resources to help you
- We investigate all quality concerns to ensure our products perform to the highest standards

If the product does not perform as described on this datasheet, we will offer a refund or replacement. For full details of the Abpromise,

please visit <https://www.abcam.com/abpromise> or contact our technical team.

Terms and conditions

- Guarantee only valid for products bought direct from Abcam or one of our authorized distributors