


Product datasheet

Anti-SOX1 antibody ab87775

★★★★☆ [10 Abreviews](#) [22 References](#) [2 Images](#)

Overview

Product name	Anti-SOX1 antibody
Description	Rabbit polyclonal to SOX1
Host species	Rabbit
Tested applications	Suitable for: ICC/IF, IHC-P, WB
Species reactivity	Reacts with: Mouse, Rat, Human Predicted to work with: Rabbit, Dog, Chimpanzee, Orangutan 
Immunogen	Synthetic peptide corresponding to Human SOX1 aa 350 to the C-terminus conjugated to keyhole limpet haemocyanin. (Peptide available as ab138973)
General notes	<p>The Life Science industry has been in the grips of a reproducibility crisis for a number of years. Abcam is leading the way in addressing this with our range of recombinant monoclonal antibodies and knockout edited cell lines for gold-standard validation. Please check that this product meets your needs before purchasing.</p> <p>If you have any questions, special requirements or concerns, please send us an inquiry and/or contact our Support team ahead of purchase. Recommended alternatives for this product can be found below, along with publications, customer reviews and Q&As</p>

Properties

Form	Liquid
Storage instructions	Shipped at 4°C. Store at +4°C short term (1-2 weeks). Upon delivery aliquot. Store at -20°C or -80°C. Avoid freeze / thaw cycle.
Storage buffer	pH: 7.40 Preservative: 0.02% Sodium azide Constituent: PBS Batches of this product that have a concentration < 1mg/ml may have BSA added as a stabilising agent. If you would like information about the formulation of a specific lot, please contact our scientific support team who will be happy to help.
Purity	Immunogen affinity purified
Clonality	Polyclonal

Isotype

IgG

Applications

The Abpromise guarantee

Our **Abpromise guarantee** covers the use of ab87775 in the following tested applications.

The application notes include recommended starting dilutions; optimal dilutions/concentrations should be determined by the end user.

Application	Abreviews	Notes
ICC/IF	★★★★★ (5)	Use at an assay dependent concentration.
IHC-P	★★★★★ (2)	Use at an assay dependent concentration.
WB	★★★★★ (1)	Use a concentration of 1 µg/ml. Detects a band of approximately 40 kDa (predicted molecular weight: 39 kDa).

Target

Function

Transcriptional activator.

Tissue specificity

Mainly expressed in the developing central nervous system.

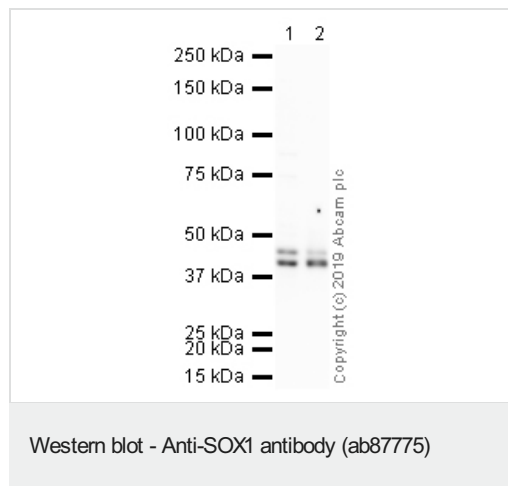
Sequence similarities

Contains 1 HMG box DNA-binding domain.

Cellular localization

Nucleus.

Images



All lanes : Anti-SOX1 antibody (ab87775) at 1 µg/ml

Lane 1 : E14Tg2a (Mouse embryonic stem cell line) Whole Cell Lysate

Lane 2 : 46C (Mouse embryonic stem cell line) Whole Cell Lysate

Lysates/proteins at 10 µg per lane.

Secondary

All lanes : Goat Anti-Rabbit IgG H&L (HRP) at 1/50000 dilution

Developed using the ECL technique.

Performed under reducing conditions.

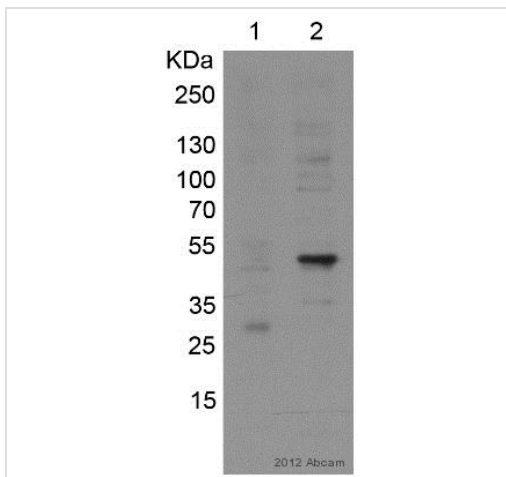
Predicted band size: 39 kDa

Observed band size: 40 kDa

Additional bands at: 45 kDa (possible non-specific binding)

Exposure time: 8 minutes

This blot was produced using a 4-12% Bis-tris gel under the MOPS buffer system. The gel was run at 200V for 50 minutes before being transferred onto a Nitrocellulose membrane at 30V for 70 minutes. The membrane was then blocked for an hour using 2% BSA before being incubated with ab87775 overnight at 4°C. Antibody binding was detected using an **anti-rabbit HRP** secondary antibody, and visualised using ECL development solution **ab133406**.



Western blot - Anti-SOX1 antibody (ab87775)

This image is courtesy of an abreview by Patrick Ovando Roche

All lanes : Anti-SOX1 antibody (ab87775) at 1/1000 dilution

Lane 1 : H1 Human embryonic stem cells

Lane 2 : H1 Human embryonic stem cell derived neural progenitor stem cells

Lysates/proteins at 20 µg per lane.

Secondary

All lanes : Mouse anti-rabbit HRP conjugated at 1/20000 dilution

Developed using the ECL technique.

Performed under reducing conditions.

Predicted band size: 39 kDa

Observed band size: 50 kDa

Exposure time: 30 seconds

Please note: All products are "FOR RESEARCH USE ONLY. NOT FOR USE IN DIAGNOSTIC PROCEDURES"

Our Abpromise to you: Quality guaranteed and expert technical support

- Replacement or refund for products not performing as stated on the datasheet
- Valid for 12 months from date of delivery
- Response to your inquiry within 24 hours
- We provide support in Chinese, English, French, German, Japanese and Spanish
- Extensive multi-media technical resources to help you
- We investigate all quality concerns to ensure our products perform to the highest standards

If the product does not perform as described on this datasheet, we will offer a refund or replacement. For full details of the Abpromise, please visit <https://www.abcam.com/abpromise> or contact our technical team.

Terms and conditions

- Guarantee only valid for products bought direct from Abcam or one of our authorized distributors