

## Product datasheet

### Anti-SOX1 antibody [EPR4766] ab109290

Recombinant RabMAb

★★★★★ [4 Abreviews](#) [16 References](#) [4 Images](#)

#### Overview

Product name	Anti-SOX1 antibody [EPR4766]
Description	Rabbit monoclonal [EPR4766] to SOX1
Host species	Rabbit
Tested applications	<b>Suitable for:</b> WB, ICC/IF, Flow Cyt (Intra) <b>Unsuitable for:</b> IP
Species reactivity	<b>Reacts with:</b> Mouse, Rat, Human
Immunogen	Synthetic peptide. This information is proprietary to Abcam and/or its suppliers.
General notes	This product is a recombinant monoclonal antibody, which offers several advantages including: <ul style="list-style-type: none"> <li>- High batch-to-batch consistency and reproducibility</li> <li>- Improved sensitivity and specificity</li> <li>- Long-term security of supply</li> <li>- Animal-free production</li> </ul> For more information <a href="#">see here</a> . Our RabMAb <sup>®</sup> technology is a patented hybridoma-based technology for making rabbit monoclonal antibodies. For details on our patents, please refer to <a href="#">RabMAb<sup>®</sup> patents</a> .

#### Properties

Form	Liquid
Storage instructions	Shipped at 4°C. Store at +4°C short term (1-2 weeks). Upon delivery aliquot. Store at -20°C. Avoid freeze / thaw cycle.
Storage buffer	pH: 7.20 Preservative: 0.01% Sodium azide Constituents: 0.05% BSA, 40% Glycerol (glycerin, glycerine), 59% PBS
Purity	Protein A purified
Clonality	Monoclonal
Clone number	EPR4766
Isotype	IgG

## Applications

### The Abpromise guarantee

Our **Abpromise guarantee** covers the use of ab109290 in the following tested applications.

The application notes include recommended starting dilutions; optimal dilutions/concentrations should be determined by the end user.

Application	Abreviews	Notes
WB		1/1000. Detects a band of approximately 40 kDa (predicted molecular weight: 39 kDa).
ICC/IF	★ ★ ★ ★ ★ (1)	1/100.
Flow Cyt (Intra)		1/100. <b>ab172730</b> - Rabbit monoclonal IgG, is suitable for use as an isotype control with this antibody.

### Application notes

Is unsuitable for IP.

## Target

### Function

Transcriptional activator.

### Tissue specificity

Mainly expressed in the developing central nervous system.

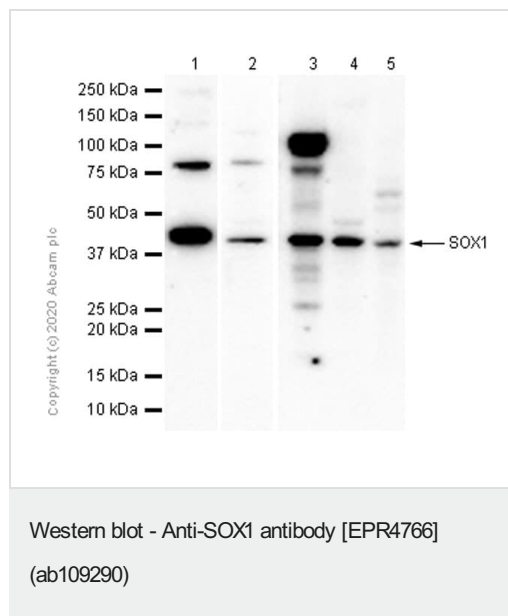
### Sequence similarities

Contains 1 HMG box DNA-binding domain.

### Cellular localization

Nucleus.

## Images



**All lanes :** Anti-SOX1 antibody [EPR4766] (ab109290) at 1/1000 dilution (Purified)

**Lane 1 :** NCCIT (Human pluripotent embryonic carcinoma epithelial cell) whole cell lysate

**Lane 2 :** Mouse brain lysate

**Lane 3 :** Neuro-2a (Mouse neuroblastoma neuroblast) whole cell lysate

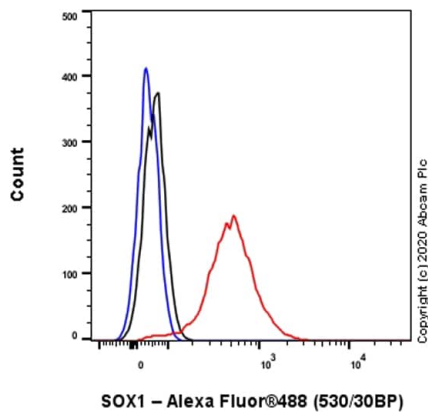
**Lane 4 :** Rat cerebral cortex lysate

**Lane 5 :** C6 (Rat glial tumor glial cell) whole cell lysate

### Secondary

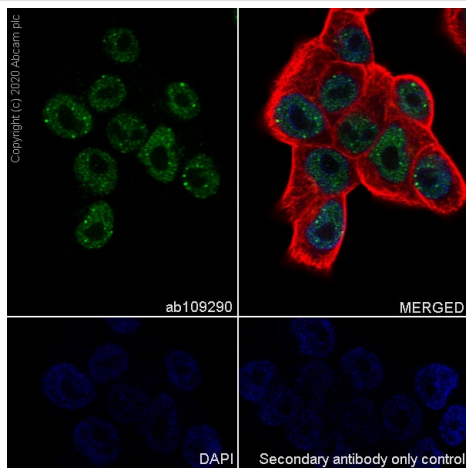
**All lanes :** Goat Anti-Rabbit IgG (HRP) with minimal cross-reactivity with human IgG at 1/2000 dilution

**Predicted band size:** 39 kDa



Flow Cytometry (Intracellular) - Anti-SOX1 antibody  
[EPR4766] (ab109290)

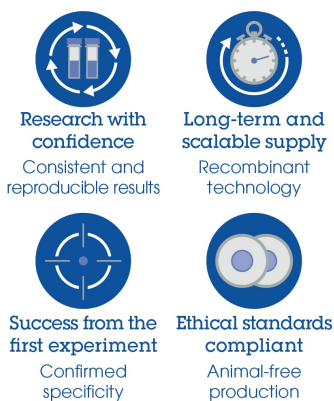
Flow Cytometry analysis of NCCIT (Human pluripotent embryonic carcinoma epithelial cell) cells labelling SOX1 with Purified ab109290 at 1:100 dilution (10 µg/ml) (Red). Cells were fixed with 4% Paraformaldehyde and permeabilised with 90% Methanol. A Goat anti rabbit IgG (Alexa Fluor® 488, [ab150077](#)) secondary antibody was used at 1:2000. Isotype control - Rabbit monoclonal IgG (Black). Unlabelled control - Cell without incubation with primary antibody and secondary antibody (Blue).



Immunocytochemistry/ Immunofluorescence - Anti-SOX1 antibody [EPR4766] (ab109290)

Immunocytochemistry analysis of NCCIT (Human pluripotent embryonic carcinoma epithelial cell) cells labeling SOX1 with Purified ab109290 at 1:500 dilution (2 µg/ml). Cells were fixed in 4% Paraformaldehyde and permeabilized with 0.1% tritonX-100. Cells were counterstained with Ab195889 Anti-alpha Tubulin antibody [DM1A] - Microtubule Marker (Alexa Fluor® 594) 1:200 (2.5 µg/ml). Goat anti rabbit IgG (Alexa Fluor® 488, [ab150077](#)) was used as the secondary antibody at 1:1000 (2 µg/ml) dilution. DAPI (blue) was used as nuclear counterstain. PBS instead of the primary antibody was used as the secondary antibody only control.

### Why choose a recombinant antibody?



Anti-SOX1 antibody [EPR4766] (ab109290)

**Please note:** All products are "FOR RESEARCH USE ONLY. NOT FOR USE IN DIAGNOSTIC PROCEDURES"

### **Our Abpromise to you: Quality guaranteed and expert technical support**

---

- Replacement or refund for products not performing as stated on the datasheet
- Valid for 12 months from date of delivery
- Response to your inquiry within 24 hours
  
- We provide support in Chinese, English, French, German, Japanese and Spanish
- Extensive multi-media technical resources to help you
- We investigate all quality concerns to ensure our products perform to the highest standards

If the product does not perform as described on this datasheet, we will offer a refund or replacement. For full details of the Abpromise, please visit <https://www.abcam.com/abpromise> or contact our technical team.

### **Terms and conditions**

---

- Guarantee only valid for products bought direct from Abcam or one of our authorized distributors