




Product datasheet

Anti-SOX21 antibody [CL4688] ab220024

★☆☆☆☆ **1 Abreviews** **7 Images**

Overview

Product name	Anti-SOX21 antibody [CL4688]
Description	Mouse monoclonal [CL4688] to SOX21
Host species	Mouse
Tested applications	Suitable for: IHC-P, WB, ICC/IF
Species reactivity	Reacts with: Mouse, Human Predicted to work with: Chicken, Xenopus laevis, Zebrafish 
Immunogen	Synthetic peptide corresponding to Human SOX21 aa 250 to the C-terminus. Database link: Q9Y651  Run BLAST with  Run BLAST with
Positive control	WB; NTERA-2 cell extract. IHC-P: Mouse embryo E12, Mouse forebrain and cerebral cortex tissue. Human stomach and cervix tissue. ICC/IF: PC-3 cells
General notes	<p>The Life Science industry has been in the grips of a reproducibility crisis for a number of years. Abcam is leading the way in addressing this with our range of recombinant monoclonal antibodies and knockout edited cell lines for gold-standard validation. Please check that this product meets your needs before purchasing.</p> <p>If you have any questions, special requirements or concerns, please send us an inquiry and/or contact our Support team ahead of purchase. Recommended alternatives for this product can be found below, along with publications, customer reviews and Q&As</p>

Properties

Form	Liquid
Storage instructions	Shipped at 4°C. Store at +4°C short term (1-2 weeks). Upon delivery aliquot. Store at -20°C long term. Avoid freeze / thaw cycle.
Storage buffer	pH: 7.20 Preservative: 0.02% Sodium azide Constituents: 40% Glycerol (glycerin, glycerine), 59% PBS
Purity	Protein A purified
Clonality	Monoclonal
Clone number	CL4688

Isotype

IgG2a

Applications

The Abpromise guarantee

Our **Abpromise guarantee** covers the use of ab220024 in the following tested applications.

The application notes include recommended starting dilutions; optimal dilutions/concentrations should be determined by the end user.

Application	Abreviews	Notes
IHC-P	★ ★ ★ ★ ★ (1)	1/200 - 1/500. Perform heat mediated antigen retrieval with citrate buffer pH 6 before commencing with IHC staining protocol.
WB		1/500 - 1/1000. Predicted molecular weight: 29 kDa.
ICC/IF		Use a concentration of 2 - 10 µg/ml.

Target

Function

May play a role as an activator of transcription of OPRM1.

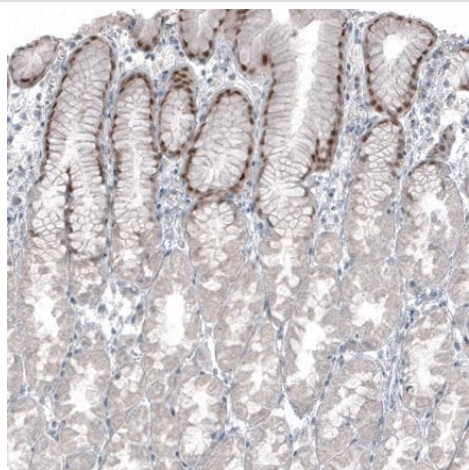
Sequence similarities

Contains 1 HMG box DNA-binding domain.

Cellular localization

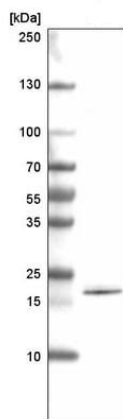
Nucleus.

Images



Immunohistochemical analysis of paraffin-embedded Human stomach tissue labeling SOX21 with ab220024 at 1/200 dilution.

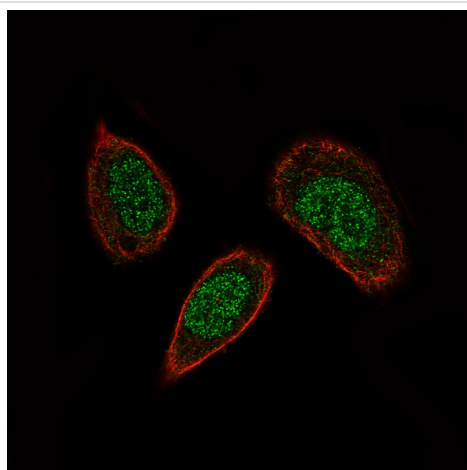
Immunohistochemistry (Formalin/PFA-fixed paraffin-embedded sections) - Anti-SOX21 antibody
[CL4688] (ab220024)



Western blot - Anti-SOX21 antibody [CL4688]
(ab220024)

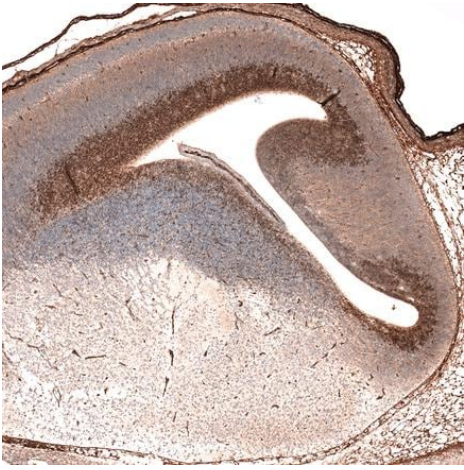
Anti-SOX21 antibody [CL4688] (ab220024) at 1/500 dilution +
NTERA-2 cell extract.

Predicted band size: 29 kDa



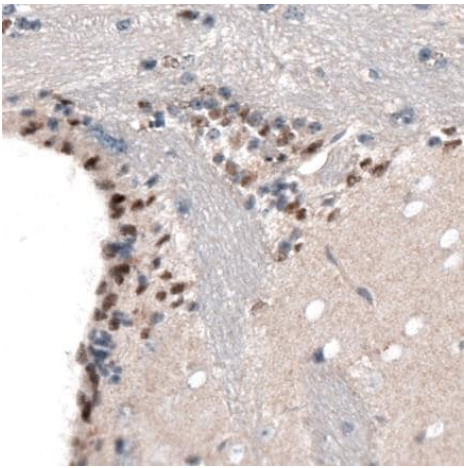
Immunocytochemistry/ Immunofluorescence - Anti-
SOX21 antibody [CL4688] (ab220024)

Immunocytochemistry/ Immunofluorescence analysis of PC-3 cells
labeling SOX21 with ab220024 at 2-10 $\mu\text{g/mL}$. Cells were fixed
with PFA and permeabilised with Triton X-100. The data is showing
specific staining in the nucleus in green. Microtubule- and nuclear
probes are visualized in red and blue, respectively (where
available).



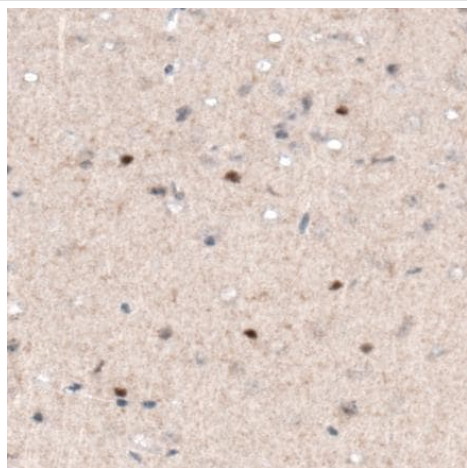
Immunohistochemical analysis of paraffin-embedded Mouse embryo E14 tissue labeling SOX21 with ab220024 at 1/200 dilution.

Immunohistochemistry (Formalin/PFA-fixed paraffin-embedded sections) - Anti-SOX21 antibody [CL4688] (ab220024)



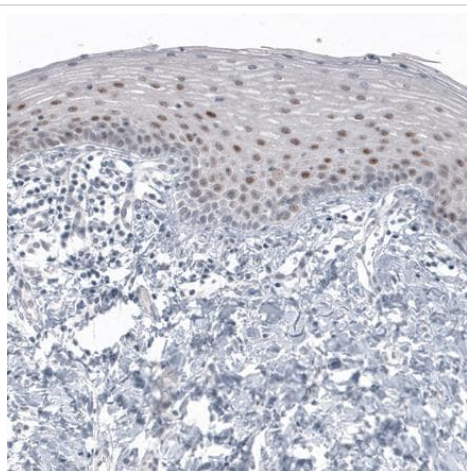
Immunohistochemical analysis of paraffin-embedded Mouse forebrain tissue labeling SOX21 with ab220024 at 1/200 dilution.

Immunohistochemistry (Formalin/PFA-fixed paraffin-embedded sections) - Anti-SOX21 antibody [CL4688] (ab220024)



Immunohistochemical analysis of paraffin-embedded Mouse cerebral cortex tissue labeling SOX21 with ab220024 at 1/200 dilution.

Immunohistochemistry (Formalin/PFA-fixed paraffin-embedded sections) - Anti-SOX21 antibody [CL4688] (ab220024)



Immunohistochemical analysis of paraffin-embedded Human cervix tissue labeling SOX21 with ab220024 at 1/200 dilution.

Immunohistochemistry (Formalin/PFA-fixed paraffin-embedded sections) - Anti-SOX21 antibody [CL4688] (ab220024)

Please note: All products are "FOR RESEARCH USE ONLY. NOT FOR USE IN DIAGNOSTIC PROCEDURES"

Our Abpromise to you: Quality guaranteed and expert technical support

- Replacement or refund for products not performing as stated on the datasheet
- Valid for 12 months from date of delivery
- Response to your inquiry within 24 hours
- We provide support in Chinese, English, French, German, Japanese and Spanish
- Extensive multi-media technical resources to help you
- We investigate all quality concerns to ensure our products perform to the highest standards

If the product does not perform as described on this datasheet, we will offer a refund or replacement. For full details of the Abpromise,

please visit <https://www.abcam.com/abpromise> or contact our technical team.

Terms and conditions

- Guarantee only valid for products bought direct from Abcam or one of our authorized distributors