

Product datasheet

Anti-SP6 antibody ab246952

[2 Images](#)

Overview

Product name	Anti-SP6 antibody
Description	Rabbit polyclonal to SP6
Host species	Rabbit
Tested applications	Suitable for: WB, ICC/IF
Species reactivity	Reacts with: Mouse, Rat, Human
Immunogen	Recombinant fragment corresponding to Human SP6 aa 150-300. Database link: Q3SY56 Run BLAST with Run BLAST with
Positive control	ICC/IF: Caco-2 cells. WB: NIH/3T3 and NBT-II cell lysate.
General notes	<p>The Life Science industry has been in the grips of a reproducibility crisis for a number of years. Abcam is leading the way in addressing this with our range of recombinant monoclonal antibodies and knockout edited cell lines for gold-standard validation. Please check that this product meets your needs before purchasing.</p> <p>If you have any questions, special requirements or concerns, please send us an inquiry and/or contact our Support team ahead of purchase. Recommended alternatives for this product can be found below, along with publications, customer reviews and Q&As</p>

Properties

Form	Liquid
Storage instructions	Shipped at 4°C. Store at +4°C short term (1-2 weeks). Upon delivery aliquot. Store at -20°C long term. Avoid freeze / thaw cycle.
Storage buffer	pH: 7.20 Preservative: 0.02% Sodium azide Constituents: 40% Glycerol (glycerin, glycerine), PBS
Purity	Immunogen affinity purified
Clonality	Polyclonal
Isotype	IgG

Applications

The Abpromise guarantee

Our **Abpromise guarantee** covers the use of ab246952 in the following tested applications.

The application notes include recommended starting dilutions; optimal dilutions/concentrations should be determined by the end user.

Application	Abreviews	Notes
WB		Use a concentration of 0.04 - 0.4 µg/ml.
ICC/IF		Use a concentration of 0.25 - 2 µg/ml. Fixation/Permeabilization: PFA/Triton X-100.

Target

Function

Promotes cell proliferation.

Tissue specificity

Ubiquitous.

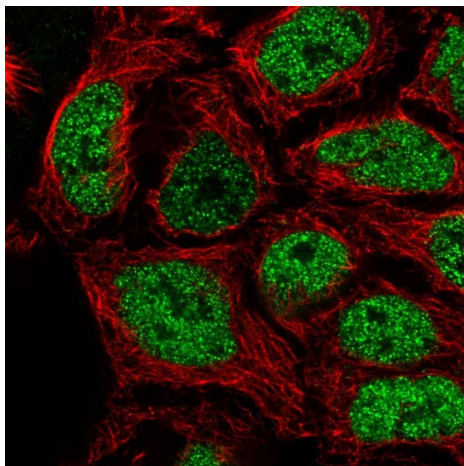
Sequence similarities

Belongs to the Sp1 C2H2-type zinc-finger protein family.
Contains 3 C2H2-type zinc fingers.

Cellular localization

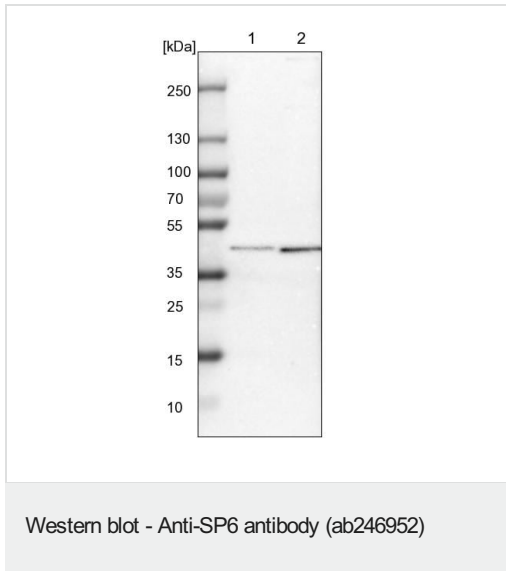
Nucleus.

Images



PFA fixed, Triton X-100 permeabilized Caco-2 (Human colorectal adenocarcinoma cell line) cells labeling SP6 using ab246952 at 4 µg/ml (green) in ICC/IF.

Immunocytochemistry/ Immunofluorescence - Anti-SP6 antibody (ab246952)



All lanes : Anti-SP6 antibody (ab246952) at 0.4 µg/ml

Lane 1 : NIH/3T3 (Mouse embryo fibroblast cell line) cell lysate

Lane 2 : NBT-II (Rat cell line) cell lysate

Please note: All products are "FOR RESEARCH USE ONLY. NOT FOR USE IN DIAGNOSTIC PROCEDURES"

Our Abpromise to you: Quality guaranteed and expert technical support

- Replacement or refund for products not performing as stated on the datasheet
- Valid for 12 months from date of delivery
- Response to your inquiry within 24 hours
- We provide support in Chinese, English, French, German, Japanese and Spanish
- Extensive multi-media technical resources to help you
- We investigate all quality concerns to ensure our products perform to the highest standards

If the product does not perform as described on this datasheet, we will offer a refund or replacement. For full details of the Abpromise, please visit <https://www.abcam.com/abpromise> or contact our technical team.

Terms and conditions

- Guarantee only valid for products bought direct from Abcam or one of our authorized distributors