




## Product datasheet

# Anti-SPACA1 antibody - C-terminal ab191843

[1 References](#) [3 Images](#)

### Overview

<b>Product name</b>	Anti-SPACA1 antibody - C-terminal
<b>Description</b>	Rabbit polyclonal to SPACA1 - C-terminal
<b>Host species</b>	Rabbit
<b>Tested applications</b>	<b>Suitable for:</b> ICC/IF, WB
<b>Species reactivity</b>	<b>Reacts with:</b> Mouse <b>Predicted to work with:</b> Cow 
<b>Immunogen</b>	Synthetic peptide corresponding to Mouse SPACA1 aa 250 to the C-terminus (C terminal) conjugated to keyhole limpet haemocyanin. Database link: <a href="#">Q9DA48</a> <div>  <a href="#">Run BLAST with</a>  <a href="#">Run BLAST with</a> </div>
<b>Positive control</b>	Extracts from testis of wild type (+/+) and SPACA1 single (+/-) knock-out mice; mouse spermatids.
<b>General notes</b>	<p>The Life Science industry has been in the grips of a reproducibility crisis for a number of years. Abcam is leading the way in addressing this with our range of recombinant monoclonal antibodies and knockout edited cell lines for gold-standard validation. Please check that this product meets your needs before purchasing.</p> <p>If you have any questions, special requirements or concerns, please send us an inquiry and/or contact our Support team ahead of purchase. Recommended alternatives for this product can be found below, along with publications, customer reviews and Q&amp;As</p>

### Properties

<b>Form</b>	Liquid
<b>Storage instructions</b>	Shipped at 4°C. Store at +4°C short term (1-2 weeks). Upon delivery aliquot. Store at -20°C long term. Avoid freeze / thaw cycle.
<b>Storage buffer</b>	pH: 6 Preservative: 0.05% Sodium azide Constituents: 50% Glycerol (glycerin, glycerine), 49% PBS
<b>Purity</b>	Protein A purified
<b>Clonality</b>	Polyclonal
<b>Isotype</b>	IgG

## Applications

### The Abpromise guarantee

Our **Abpromise guarantee** covers the use of ab191843 in the following tested applications.

The application notes include recommended starting dilutions; optimal dilutions/concentrations should be determined by the end user.

Application	Abreviews	Notes
ICC/IF		1/100 - 1/500.
WB		1/1000. Predicted molecular weight: 33 kDa.

## Target

### Function

May be involved in sperm-egg fusion.

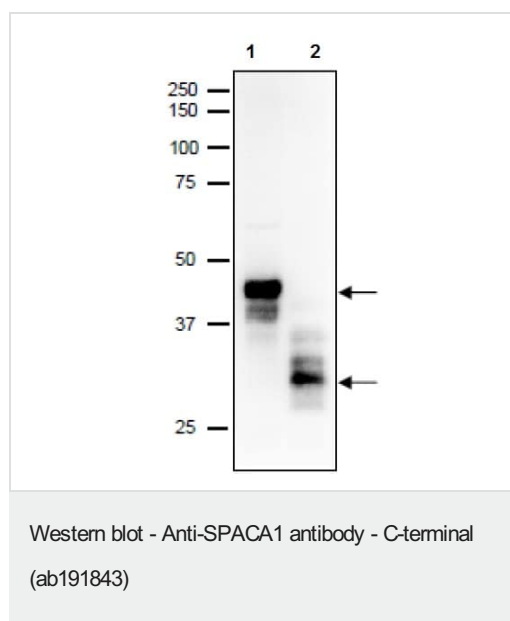
### Tissue specificity

Testis specific. At the equatorial segment and the inner acrosomal membrane of capacitated sperm.

### Cellular localization

Membrane.

## Images



**All lanes :** Anti-SPACA1 antibody - C-terminal (ab191843) at 1/1000 dilution

**Lane 1 :** Mouse testis tissue lysate

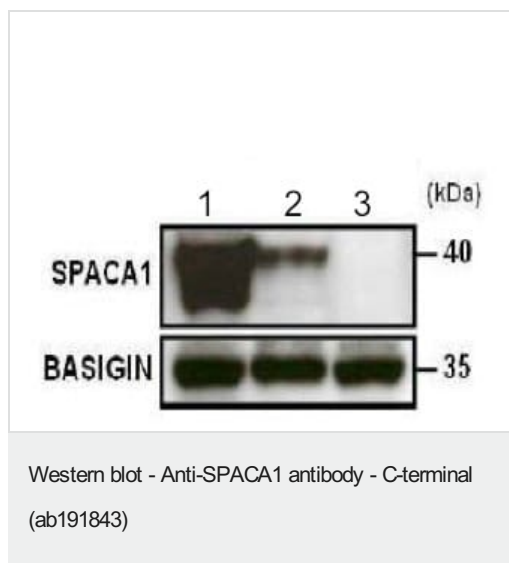
**Lane 2 :** Mouse sperm cell lysate

### Secondary

**All lanes :** Goat Anti-Rabbit IgG H&L (HRP) (**ab97051**) at 1/10000 dilution

**Predicted band size:** 33 kDa

Several proteins associated with sperm undergo modification during maturation. Multiple bands are reflection of post-translational modifications by glycosylation and phosphorylation.



**All lanes :** Anti-SPACA1 antibody - C-terminal (ab191843) at 1/1000 dilution

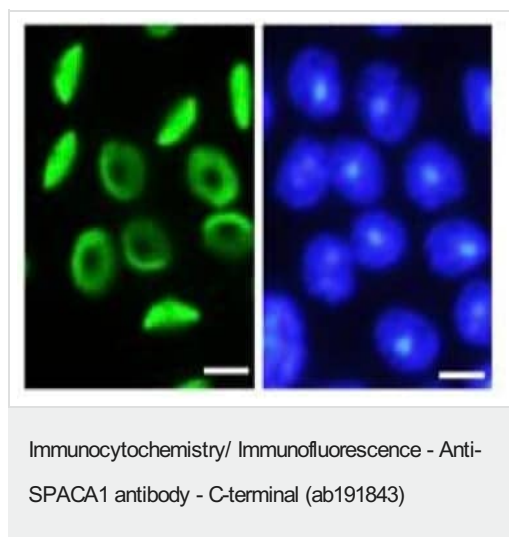
**Lane 1 :** extracts from testis of wild type (+/+) mice

**Lane 2 :** extracts from testis of SPACA1 single (+/-) knock-out mice

**Lane 3 :** extracts from testis of SPACA1 double (-/-) knock-out mice

**Predicted band size:** 33 kDa

Basigin was used as a loading control.



Immunofluorescent analysis of round spermatids labeling SPACA1 with ab191843 at 1/100 and as a secondary antibody, Alexa-Fluor 488 conjugated anti-rabbit IgG antibody. Image at the right stained with Hoechst 33342.

**Please note:** All products are "FOR RESEARCH USE ONLY. NOT FOR USE IN DIAGNOSTIC PROCEDURES"

### Our Abpromise to you: Quality guaranteed and expert technical support

- Replacement or refund for products not performing as stated on the datasheet
- Valid for 12 months from date of delivery
- Response to your inquiry within 24 hours
- We provide support in Chinese, English, French, German, Japanese and Spanish
- Extensive multi-media technical resources to help you
- We investigate all quality concerns to ensure our products perform to the highest standards

If the product does not perform as described on this datasheet, we will offer a refund or replacement. For full details of the Abpromise, please visit <https://www.abcam.com/abpromise> or contact our technical team.

#### **Terms and conditions**

---

- Guarantee only valid for products bought direct from Abcam or one of our authorized distributors