


Anti-SPAG6 antibody ab155653

[5 References](#) [2 Images](#)

Overview

Product name	Anti-SPAG6 antibody
Description	Rabbit polyclonal to SPAG6
Host species	Rabbit
Tested applications	Suitable for: WB, IHC-P
Species reactivity	Reacts with: Human Predicted to work with: Mouse, Rat, Cow, Pig, Xenopus laevis, Xenopus tropicalis 
Immunogen	Recombinant protein fragment, corresponding to a region within amino acids 180-465 of Human SPAG6 isoform 2 (UniProt ID: O75602).
Positive control	NT2D1, IMR32, U87 MG and MCF7 cell lysates; Human MCF7 xenograft tissue.
General notes	<p>The Life Science industry has been in the grips of a reproducibility crisis for a number of years. Abcam is leading the way in addressing this with our range of recombinant monoclonal antibodies and knockout edited cell lines for gold-standard validation. Please check that this product meets your needs before purchasing.</p> <p>If you have any questions, special requirements or concerns, please send us an inquiry and/or contact our Support team ahead of purchase. Recommended alternatives for this product can be found below, along with publications, customer reviews and Q&As</p>

Properties

Form	Liquid
Storage instructions	Shipped at 4°C. Upon delivery aliquot. Store at -20°C or -80°C. Avoid freeze / thaw cycle.
Storage buffer	pH: 7.00 Preservative: 0.01% Thimerosal (merthiolate) Constituents: 1.21% Tris, 0.75% Glycine, 20% Glycerol (glycerin, glycerine)
Purity	Immunogen affinity purified
Clonality	Polyclonal
Isotype	IgG

Applications

The Abpromise guarantee

Our **Abpromise guarantee** covers the use of ab155653 in the following tested applications.

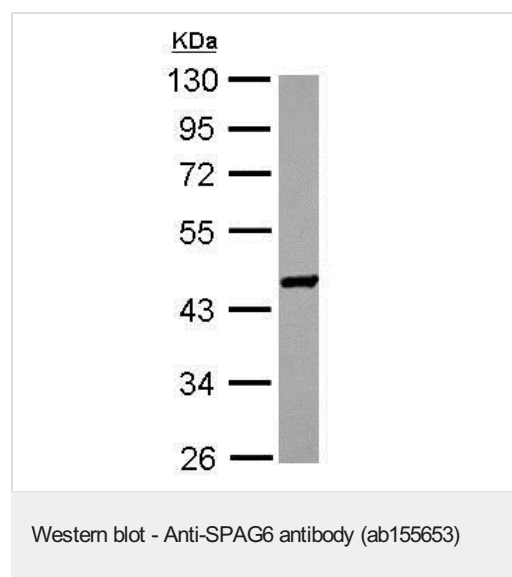
The application notes include recommended starting dilutions; optimal dilutions/concentrations should be determined by the end user.

Application	Abreviews	Notes
WB		1/500 - 1/3000. Predicted molecular weight: 50 kDa.
IHC-P		1/100 - 1/1000. Perform heat mediated antigen retrieval with citrate buffer pH 6 before commencing with IHC staining protocol. Antigen retrieval is also possible using Tris-EDTA buffer (pH 8.0).

Target

Function	Important for structural integrity of the central apparatus in the sperm tail and for flagellar motility.
Tissue specificity	Highly expressed in testis.
Sequence similarities	Contains 8 ARM repeats.
Cellular localization	Cytoplasm > cytoskeleton. Cell projection > cilium > flagellum. Associated with microtubules. Detected on the sperm flagellum.

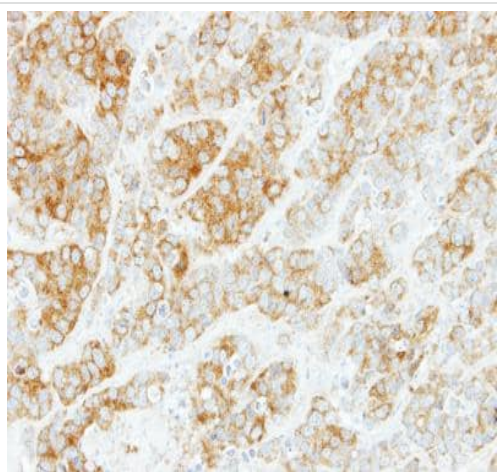
Images



Anti-SPAG6 antibody (ab155653) at 1/1000 dilution + MCF7 cell lysate at 30 µg

Predicted band size: 50 kDa

10% SDS PAGE



Immunohistochemical analysis of formalin-fixed, paraffin-embedded Human MCF7 xenograft tissue, labeling SPAG6 using ab155653 at a 1/500 dilution.

Immunohistochemistry (Formalin/PFA-fixed paraffin-embedded sections) - Anti-SPAG6 antibody (ab155653)

Please note: All products are "FOR RESEARCH USE ONLY. NOT FOR USE IN DIAGNOSTIC PROCEDURES"

Our Abpromise to you: Quality guaranteed and expert technical support

- Replacement or refund for products not performing as stated on the datasheet
- Valid for 12 months from date of delivery
- Response to your inquiry within 24 hours
- We provide support in Chinese, English, French, German, Japanese and Spanish
- Extensive multi-media technical resources to help you
- We investigate all quality concerns to ensure our products perform to the highest standards

If the product does not perform as described on this datasheet, we will offer a refund or replacement. For full details of the Abpromise, please visit <https://www.abcam.com/abpromise> or contact our technical team.

Terms and conditions

- Guarantee only valid for products bought direct from Abcam or one of our authorized distributors