




## Product datasheet

### Anti-SPANX antibody ab47252

[1 References](#) [1 Image](#)

#### Overview

<b>Product name</b>	Anti-SPANX antibody
<b>Description</b>	Rabbit polyclonal to SPANX
<b>Host species</b>	Rabbit
<b>Specificity</b>	The immunogen sequence is present within SPANX-A, SPANX-B, SPANX-C, SPANX-D and SPANX-N, but not present within SPANX-E.
<b>Tested applications</b>	<b>Suitable for:</b> WB
<b>Species reactivity</b>	<b>Reacts with:</b> Human <b>Predicted to work with:</b> Chimpanzee, Gorilla 
<b>Immunogen</b>	Synthetic peptide: GDSDPQPAPKKMKTSES , corresponding to internal sequence amino acids 31-47 of Human SPANX C  <a href="#">Run BLAST with</a>  <a href="#">Run BLAST with</a>
<b>Positive control</b>	Nuclear extract from VWM105 cells
<b>General notes</b>	<p>The Life Science industry has been in the grips of a reproducibility crisis for a number of years. Abcam is leading the way in addressing this with our range of recombinant monoclonal antibodies and knockout edited cell lines for gold-standard validation. Please check that this product meets your needs before purchasing.</p> <p>If you have any questions, special requirements or concerns, please send us an inquiry and/or contact our Support team ahead of purchase. Recommended alternatives for this product can be found below, along with publications, customer reviews and Q&amp;As</p>

#### Properties

<b>Form</b>	Liquid
<b>Storage instructions</b>	Shipped at 4°C. Upon delivery aliquot and store at -20°C or -80°C. Avoid repeated freeze / thaw cycles.
<b>Storage buffer</b>	Preservative: 0.01% Sodium azide Constituents: 0.42% Potassium phosphate, 0.87% Sodium chloride
<b>Purity</b>	Immunogen affinity purified
<b>Clonality</b>	Polyclonal

Isotype

IgG

## Applications

### The Abpromise guarantee

Our **Abpromise guarantee** covers the use of ab47252 in the following tested applications.

The application notes include recommended starting dilutions; optimal dilutions/concentrations should be determined by the end user.

Application	Abreviews	Notes
WB		1/500 - 1/3000. Predicted molecular weight: 11 kDa.

## Target

### Tissue specificity

Detected in testis, melanoma and bladder carcinoma.

### Sequence similarities

Belongs to the SPAN-X family.

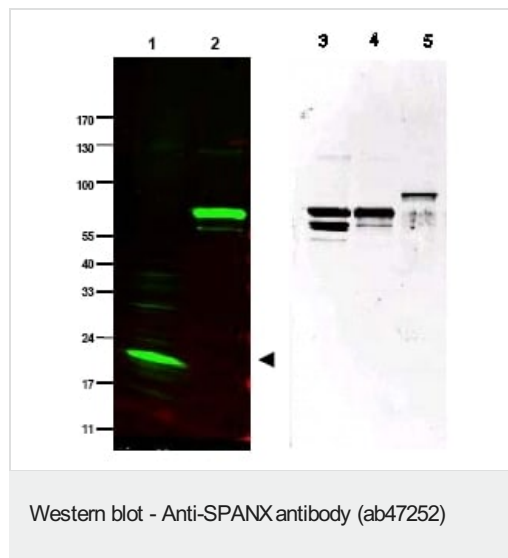
### Developmental stage

Detected in round and elongating spermatids.

### Cellular localization

Cytoplasm. Nucleus. Associated with nuclear craters.

## Images



**All lanes :** Anti-SPANX antibody (ab47252) at 1/1000 dilution

**Lane 1 :** Nuclear extract from VWM105 cells

**Lane 2 :** purified recombinant SPANX-C fusion protein.

**Lane 3 :** purified recombinant SPANX-B, protein.

**Lane 4 :** purified recombinant SPANX-C, protein.

**Lane 5 :** purified recombinant SPANX-N, protein.

### Secondary

**Lanes 1-2 :** IRDye™800 conjugated Gt-a-Rabbit IgG [H&L] MX (611-132-122)

**Predicted band size:** 11 kDa

**Observed band size:** 17 kDa

**Additional bands at:** 60 kDa, 70 kDa, 80 kDa. We are unsure as to the identity of these extra bands.

**Please note:** All products are "FOR RESEARCH USE ONLY. NOT FOR USE IN DIAGNOSTIC PROCEDURES"

### **Our Abpromise to you: Quality guaranteed and expert technical support**

---

- Replacement or refund for products not performing as stated on the datasheet
- Valid for 12 months from date of delivery
- Response to your inquiry within 24 hours
  
- We provide support in Chinese, English, French, German, Japanese and Spanish
- Extensive multi-media technical resources to help you
- We investigate all quality concerns to ensure our products perform to the highest standards

If the product does not perform as described on this datasheet, we will offer a refund or replacement. For full details of the Abpromise, please visit <https://www.abcam.com/abpromise> or contact our technical team.

### **Terms and conditions**

---

- Guarantee only valid for products bought direct from Abcam or one of our authorized distributors