



## Product datasheet

# Anti-SPCS2/SPC25 antibody ab121395

[1 References](#) [8 Images](#)

### Overview

---

<b>Product name</b>	Anti-SPCS2/SPC25 antibody
<b>Description</b>	Rabbit polyclonal to SPCS2/SPC25
<b>Host species</b>	Rabbit
<b>Tested applications</b>	<b>Suitable for:</b> ICC/IF, WB, IHC-P
<b>Species reactivity</b>	<b>Reacts with:</b> Mouse, Rat, Human
<b>Immunogen</b>	Recombinant fragment corresponding to Human SPCS2/SPC25 aa 2-65. Sequence:  AAAAVQGGRSGGSGGCSGAGGASNCGTGSGRSGLLDK WKIDDKPKIDKW DGSVAVKNSLDDSAK  Database link: <a href="#">Q15005</a>  <a href="#">Run BLAST with</a>  <a href="#">Run BLAST with</a>
<b>Positive control</b>	WB: RT-4, U-251 MG, Human liver and tonsil; mouse NIH/3T3, rat NBT-II cells; IHC-P: Human epididymis, pancreas, colon, lymph node, cerebral cortex tissues; ICC/IF: human cell line U-2 OS
<b>General notes</b>	<p>The Life Science industry has been in the grips of a reproducibility crisis for a number of years. Abcam is leading the way in addressing this with our range of recombinant monoclonal antibodies and knockout edited cell lines for gold-standard validation. Please check that this product meets your needs before purchasing.</p> <p>If you have any questions, special requirements or concerns, please send us an inquiry and/or contact our Support team ahead of purchase. Recommended alternatives for this product can be found below, along with publications, customer reviews and Q&amp;As</p>

### Properties

---

<b>Form</b>	Liquid
<b>Storage instructions</b>	Shipped at 4°C. Upon delivery aliquot and store at -20°C. Avoid repeated freeze / thaw cycles.
<b>Storage buffer</b>	pH: 7.20 Preservative: 0.02% Sodium azide Constituents: 59% PBS, 40% Glycerol (glycerin, glycerine)
<b>Purity</b>	Immunogen affinity purified
<b>Clonality</b>	Polyclonal

Isotype

IgG

## Applications

### The Abpromise guarantee

Our **Abpromise guarantee** covers the use of ab121395 in the following tested applications.

The application notes include recommended starting dilutions; optimal dilutions/concentrations should be determined by the end user.

Application	Abreviews	Notes
ICC/IF		Use a concentration of 0.25 - 0.2 µg/ml.
WB		Use a concentration of 0.04 - 0.4 µg/ml.
IHC-P		1/50 - 1/200. Perform heat mediated antigen retrieval with citrate buffer pH 6 before commencing with IHC staining protocol.

## Target

### Function

Component of the microsomal signal peptidase complex which removes signal peptides from nascent proteins as they are translocated into the lumen of the endoplasmic reticulum.

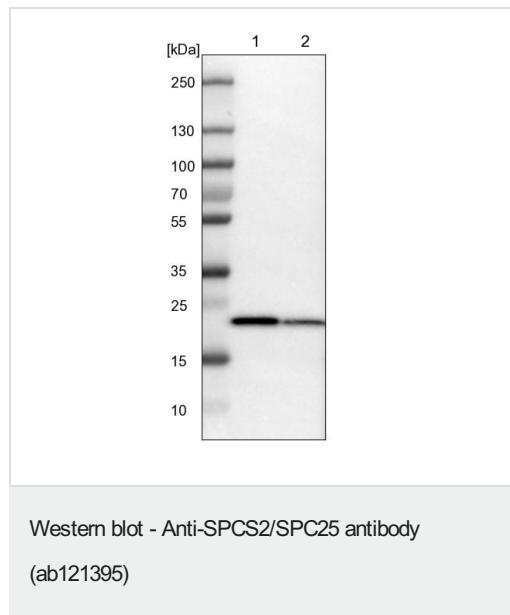
### Sequence similarities

Belongs to the SPCS2 family.

### Cellular localization

Microsome membrane. Endoplasmic reticulum membrane.

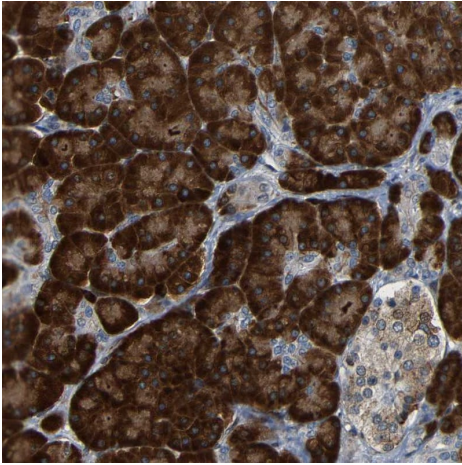
## Images



**All lanes :** Anti-SPCS2/SPC25 antibody (ab121395) at 0.4 µg/ml

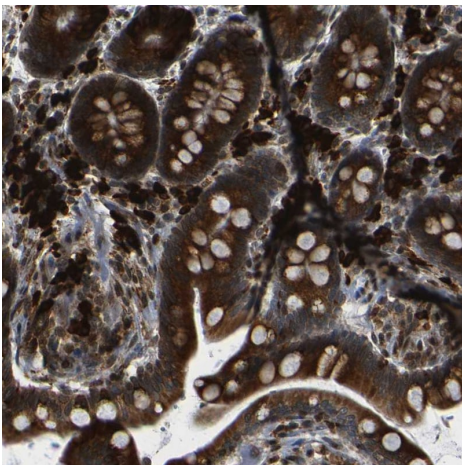
**Lane 1 :** NIH/3T3 (mouse embryonic fibroblasts) cell lysate

**Lane 2 :** NBT-II (rat Wistar bladder tumour) cell lysate



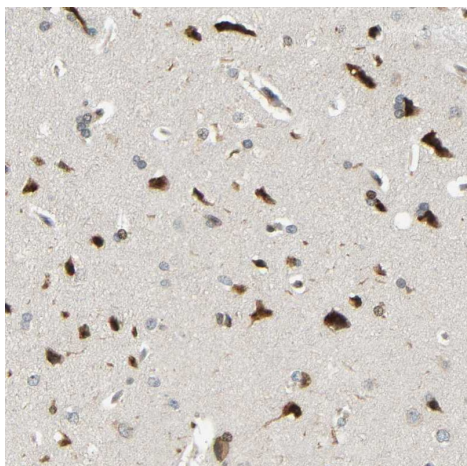
Immunohistochemistry (Formalin/PFA-fixed paraffin-embedded sections) - Anti-SPCS2/SPC25 antibody (ab121395)

Immunohistochemistry (Formalin/PFA-fixed paraffin-embedded sections) analysis of human pancreas tissue labelling SPCS2/SPC25 with ab121395 at 1/50 dilution. Heat induced epitope retrieval pH 6 performed before commencing with IHC staining protocol.



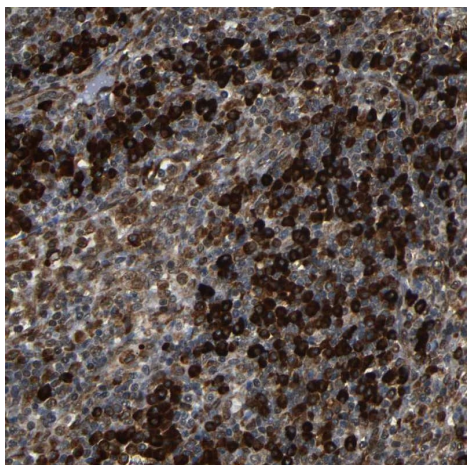
Immunohistochemistry (Formalin/PFA-fixed paraffin-embedded sections) - Anti-SPCS2/SPC25 antibody (ab121395)

Immunohistochemistry (Formalin/PFA-fixed paraffin-embedded sections) analysis of human colon tissue labelling SPCS2/SPC25 with ab121395 at 1/50 dilution. Heat induced epitope retrieval pH 6 performed before commencing with IHC staining protocol.



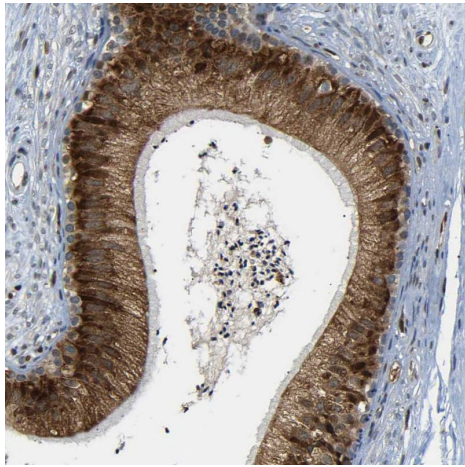
Immunohistochemistry (Formalin/PFA-fixed paraffin-embedded sections) analysis of human cerebral cortex tissue labelling SPCS2/SPC25 with ab121395 at 1/50 dilution. Heat induced epitope retrieval pH 6 performed before commencing with IHC staining protocol.

Immunohistochemistry (Formalin/PFA-fixed paraffin-embedded sections) - Anti-SPCS2/SPC25 antibody (ab121395)



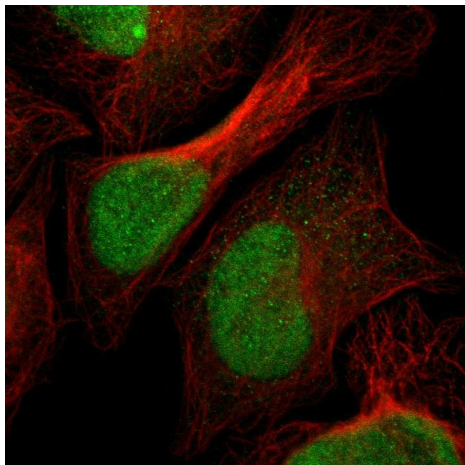
Immunohistochemistry (Formalin/PFA-fixed paraffin-embedded sections) analysis of human lymph node tissue labelling SPCS2/SPC25 with ab121395 at 1/50 dilution. Heat induced epitope retrieval pH 6 performed before commencing with IHC staining protocol.

Immunohistochemistry (Formalin/PFA-fixed paraffin-embedded sections) - Anti-SPCS2/SPC25 antibody (ab121395)



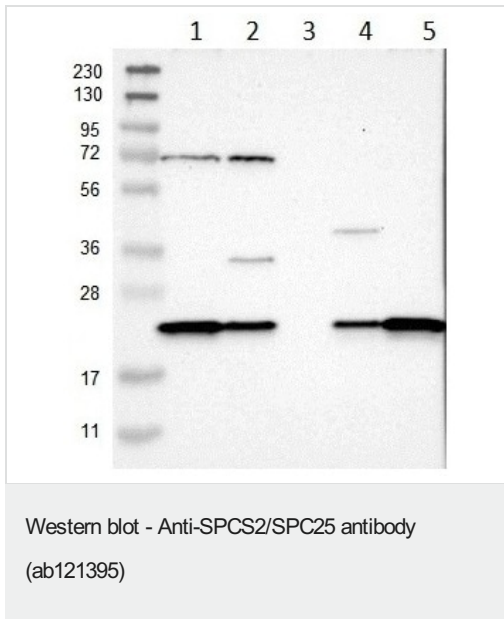
Immunohistochemistry (Formalin/PFA-fixed paraffin-embedded sections) - Anti-SPCS2/SPC25 antibody (ab121395)

Immunohistochemistry (Formalin/PFA-fixed paraffin-embedded sections) analysis of human epididymis tissue labelling SPCS2/SPC25 with ab121395 at 1/50 dilution. Heat induced epitope retrieval pH 6 performed before commencing with IHC staining protocol.



Immunocytochemistry/ Immunofluorescence - Anti-SPCS2/SPC25 antibody (ab121395)

Immunocytochemistry/immunofluorescence analysis of human cell line U-2 OS labelling SPCS2/SPC25 with ab121395 at 2 µg/mL



**All lanes** : Anti-SPCS2/SPC25 antibody (ab121395) at 1/250 dilution

**Lane 1** : RT-4

**Lane 2** : U-251 MG

**Lane 3** : Human plasma

**Lane 4** : Human liver

**Lane 5** : Human tonsil

Developed using the ECL technique.

**Please note:** All products are "FOR RESEARCH USE ONLY. NOT FOR USE IN DIAGNOSTIC PROCEDURES"

### Our Abpromise to you: Quality guaranteed and expert technical support

- Replacement or refund for products not performing as stated on the datasheet
- Valid for 12 months from date of delivery
- Response to your inquiry within 24 hours
- We provide support in Chinese, English, French, German, Japanese and Spanish
- Extensive multi-media technical resources to help you
- We investigate all quality concerns to ensure our products perform to the highest standards

If the product does not perform as described on this datasheet, we will offer a refund or replacement. For full details of the Abpromise, please visit <https://www.abcam.com/abpromise> or contact our technical team.

### Terms and conditions

- Guarantee only valid for products bought direct from Abcam or one of our authorized distributors