




## Product datasheet

# Anti-SPG3A/ATL1 antibody [1F6B12] ab233646

2 Images

### Overview

<b>Product name</b>	Anti-SPG3A/ATL1 antibody [1F6B12]
<b>Description</b>	Mouse monoclonal [1F6B12] to SPG3A/ATL1
<b>Host species</b>	Mouse
<b>Tested applications</b>	<b>Suitable for:</b> WB
<b>Species reactivity</b>	<b>Reacts with:</b> Human <b>Predicted to work with:</b> Mouse, Rat, Cow, Cynomolgus monkey, Orangutan 
<b>Immunogen</b>	Recombinant fragment corresponding to Human SPG3A/ATL1 aa 1-100. Expressed in E.coli. Database link: <a href="#">Q8WXF7</a>  <a href="#">Run BLAST with</a>  <a href="#">Run BLAST with</a>
<b>Positive control</b>	WB: Recombinant human SPG3A/ATL1 (aa 1-100) protein; SPG3A/ATL1 (aa 1-100)-hlgGFc transfected HEK-293 cell lysate.
<b>General notes</b>	<p>The Life Science industry has been in the grips of a reproducibility crisis for a number of years. Abcam is leading the way in addressing this with our range of recombinant monoclonal antibodies and knockout edited cell lines for gold-standard validation. Please check that this product meets your needs before purchasing.</p> <p>If you have any questions, special requirements or concerns, please send us an inquiry and/or contact our Support team ahead of purchase. Recommended alternatives for this product can be found below, along with publications, customer reviews and Q&amp;As</p>

### Properties

<b>Form</b>	Liquid
<b>Storage instructions</b>	Shipped at 4°C. Store at +4°C short term (1-2 weeks). Upon delivery aliquot. Store at -20°C long term. Avoid freeze / thaw cycle.
<b>Storage buffer</b>	Preservative: 0.05% Sodium azide Constituent: PBS
<b>Purity</b>	Protein G purified
<b>Purification notes</b>	Purified from tissue culture supernatant.
<b>Clonality</b>	Monoclonal
<b>Clone number</b>	1F6B12

Isotype IgG1

## Applications

**The Abpromise guarantee** Our **Abpromise guarantee** covers the use of ab233646 in the following tested applications. The application notes include recommended starting dilutions; optimal dilutions/concentrations should be determined by the end user.

Application	Abreviews	Notes
WB		1/500 - 1/2000.

## Target

**Function** GTPase tethering membranes through formation of trans-homooligomer and mediating homotypic fusion of endoplasmic reticulum membranes. Functions in endoplasmic reticulum tubular network biogenesis. May also regulate Golgi biogenesis. May regulate axonal development.

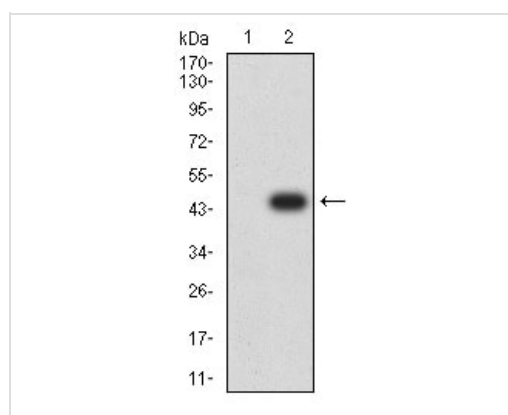
**Tissue specificity** Expressed predominantly in the adult and fetal central nervous system. Measurable expression in all tissues examined, although expression in adult brain is at least 50-fold higher than in other tissues. Detected predominantly in pyramidal neurons in the cerebral cortex and the hippocampus of the brain. Expressed in upper and lower motor neurons (at protein level).

**Involvement in disease** Defects in ATL1 are the cause of spastic paraplegia autosomal dominant type 3 (SPG3) [MIM:182600]; also known as Strumpell-Lorain syndrome. Spastic paraplegia is a degenerative spinal cord disorder characterized by a slow, gradual, progressive weakness and spasticity of the lower limbs.

**Sequence similarities** Belongs to the GBP family. Atlastin subfamily.

**Cellular localization** Endoplasmic reticulum membrane. Golgi apparatus membrane. Cell projection > axon.

## Images

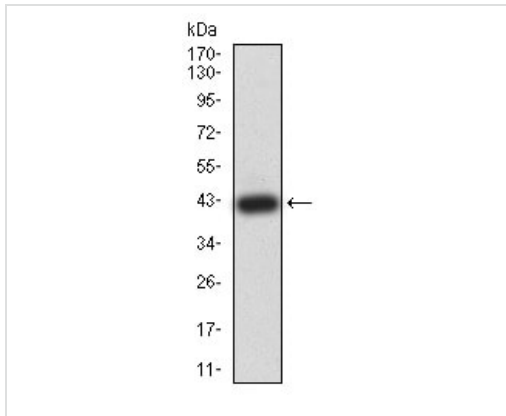


Western blot - Anti-SPG3A/ATL1 antibody [1F6B12] (ab233646)

**All lanes** : Anti-SPG3A/ATL1 antibody [1F6B12] (ab233646) at 1/500 dilution

**Lane 1** : HEK-293 (human epithelial cell line from embryonic kidney) cell lysate

**Lane 2** : SPG3A/ATL1 (aa 1-100)-hlgGfC transfected HEK-293 (human epithelial cell line from embryonic kidney) cell lysate



Anti-SPG3A/ATL1 antibody [1F6B12] (ab233646) at 1/500 dilution  
+ Recombinant human SPG3A/ATL1 protein.

Expected MW is 41kDa.

Western blot - Anti-SPG3A/ATL1 antibody [1F6B12]  
(ab233646)

**Please note:** All products are "FOR RESEARCH USE ONLY. NOT FOR USE IN DIAGNOSTIC PROCEDURES"

### Our Abpromise to you: Quality guaranteed and expert technical support

---

- Replacement or refund for products not performing as stated on the datasheet
- Valid for 12 months from date of delivery
- Response to your inquiry within 24 hours
- We provide support in Chinese, English, French, German, Japanese and Spanish
- Extensive multi-media technical resources to help you
- We investigate all quality concerns to ensure our products perform to the highest standards

If the product does not perform as described on this datasheet, we will offer a refund or replacement. For full details of the Abpromise, please visit <https://www.abcam.com/abpromise> or contact our technical team.

### Terms and conditions

---

- Guarantee only valid for products bought direct from Abcam or one of our authorized distributors