

Product datasheet

Anti-SPHK1 antibody ab228645

[2 Images](#)

Overview

Product name	Anti-SPHK1 antibody
Description	Rabbit polyclonal to SPHK1
Host species	Rabbit
Tested applications	Suitable for: WB, ICC/IF
Species reactivity	Reacts with: Human
Immunogen	Recombinant fragment within Human SPHK1 (internal sequence). The exact sequence is proprietary. Database link: Q9NYA1
Positive control	WB: MOLT-4 whole cell lysate. ICC/IF: A-375 cells.
General notes	<p>The Life Science industry has been in the grips of a reproducibility crisis for a number of years. Abcam is leading the way in addressing this with our range of recombinant monoclonal antibodies and knockout edited cell lines for gold-standard validation. Please check that this product meets your needs before purchasing.</p> <p>If you have any questions, special requirements or concerns, please send us an inquiry and/or contact our Support team ahead of purchase. Recommended alternatives for this product can be found below, along with publications, customer reviews and Q&As</p>

Properties

Form	Liquid
Storage instructions	Shipped at 4°C. Store at +4°C short term (1-2 weeks). Upon delivery aliquot. Store at -20°C long term. Avoid freeze / thaw cycle.
Storage buffer	pH: 7.00 Preservative: 0.01% Thimerosal (merthiolate) Constituents: 1.21% Tris, 0.75% Glycine, 10% Glycerol (glycerin, glycerine)
Purity	Immunogen affinity purified
Clonality	Polyclonal
Isotype	IgG

Applications

The Abpromise guarantee

Our **Abpromise guarantee** covers the use of ab228645 in the following tested applications.

The application notes include recommended starting dilutions; optimal dilutions/concentrations should be determined by the end user.

Application	Abreviews	Notes
WB		1/500 - 1/3000. Predicted molecular weight: 43 kDa.
ICC/IF		1/100 - 1/1000.

Target

Function

Catalyzes the phosphorylation of sphingosine to form sphingosine 1-phosphate (SPP), a lipid mediator with both intra-and extracellular functions. Also acts on D-erythro-sphingosine and to a lesser extent sphinganine, but not other lipids, such as D,L-threo-dihydrosphingosine, N,N-dimethylsphingosine, diacylglycerol, ceramide, or phosphatidylinositol.

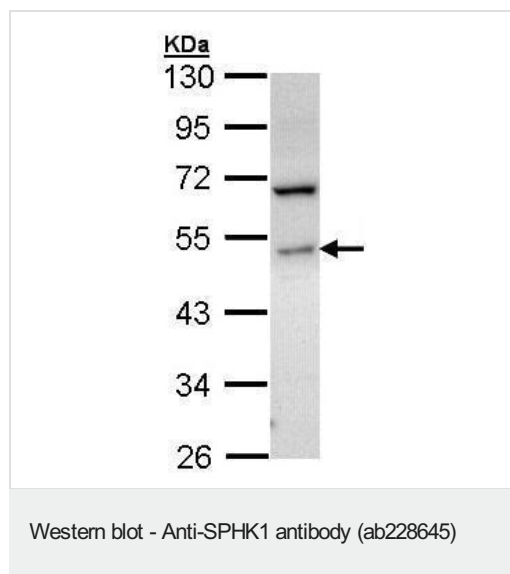
Tissue specificity

Widely expressed with highest levels in adult liver, kidney, heart and skeletal muscle.

Sequence similarities

Contains 1 DAGKc domain.

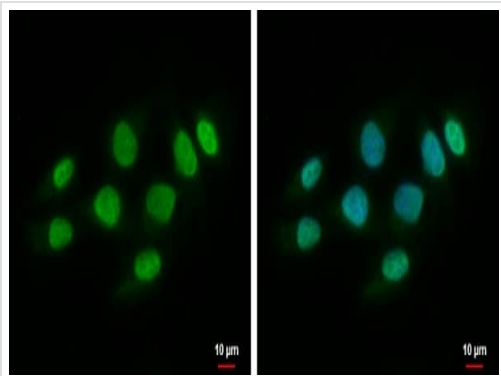
Images



Anti-SPHK1 antibody (ab228645) at 1/1000 dilution + MOLT-4 (human lymphoblastic leukemia cell line) whole cell lysate at 30 μ g

Predicted band size: 43 kDa

10% SDS-PAGE gel.



Immunocytochemistry/ Immunofluorescence - Anti-SPHK1 antibody (ab228645)

4% paraformaldehyde-fixed A-375 (human malignant melanoma cell line) cells stained for SPHK1 (green) using ab228645 at 1/500 dilution in ICC/IF.

Nuclear counterstain: Hoechst 33342 (blue).

Please note: All products are "FOR RESEARCH USE ONLY. NOT FOR USE IN DIAGNOSTIC PROCEDURES"

Our Abpromise to you: Quality guaranteed and expert technical support

- Replacement or refund for products not performing as stated on the datasheet
- Valid for 12 months from date of delivery
- Response to your inquiry within 24 hours
- We provide support in Chinese, English, French, German, Japanese and Spanish
- Extensive multi-media technical resources to help you
- We investigate all quality concerns to ensure our products perform to the highest standards

If the product does not perform as described on this datasheet, we will offer a refund or replacement. For full details of the Abpromise, please visit <https://www.abcam.com/abpromise> or contact our technical team.

Terms and conditions

- Guarantee only valid for products bought direct from Abcam or one of our authorized distributors