



### Anti-SPINK5/LEKTI antibody ab246890

5 Images

#### Overview

<b>Product name</b>	Anti-SPINK5/LEKTI antibody
<b>Description</b>	Rabbit polyclonal to SPINK5/LEKTI
<b>Host species</b>	Rabbit
<b>Tested applications</b>	<b>Suitable for:</b> IHC-P, ICC/IF
<b>Species reactivity</b>	<b>Reacts with:</b> Human
<b>Immunogen</b>	Recombinant fragment corresponding to Human SPINK5/LEKTI aa 150-300. Database link: <a href="#">Q9NQ38</a>
	<div>  <a href="#">Run BLAST with</a>  <a href="#">Run BLAST with</a> </div>
<b>Positive control</b>	IHC-P: Human tonsil, skin, uterine cervix and kidney tissue. ICC/IF: HeLa cells.
<b>General notes</b>	<p>The Life Science industry has been in the grips of a reproducibility crisis for a number of years. Abcam is leading the way in addressing this with our range of recombinant monoclonal antibodies and knockout edited cell lines for gold-standard validation. Please check that this product meets your needs before purchasing.</p> <p>If you have any questions, special requirements or concerns, please send us an inquiry and/or contact our Support team ahead of purchase. Recommended alternatives for this product can be found below, along with publications, customer reviews and Q&amp;As</p>

#### Properties

<b>Form</b>	Liquid
<b>Storage instructions</b>	Shipped at 4°C. Store at +4°C short term (1-2 weeks). Upon delivery aliquot. Store at -20°C long term. Avoid freeze / thaw cycle.
<b>Storage buffer</b>	pH: 7.20 Preservative: 0.02% Sodium azide Constituents: 40% Glycerol (glycerin, glycerine), PBS
<b>Purity</b>	Immunogen affinity purified
<b>Clonality</b>	Polyclonal
<b>Isotype</b>	IgG

#### Applications

## The Abpromise guarantee

Our **Abpromise guarantee** covers the use of ab246890 in the following tested applications.

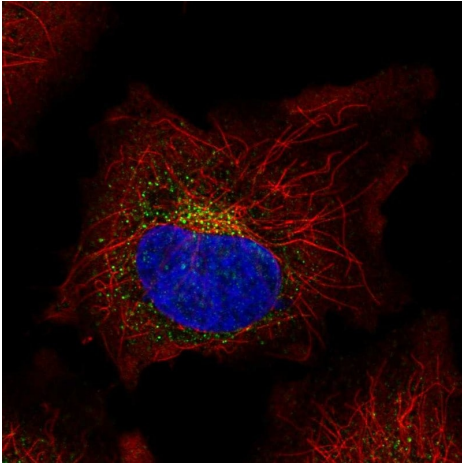
The application notes include recommended starting dilutions; optimal dilutions/concentrations should be determined by the end user.

Application	Abreviews	Notes
IHC-P		1/200 - 1/500. Perform heat mediated antigen retrieval with citrate buffer pH 6 before commencing with IHC staining protocol.
ICC/IF		Use a concentration of 0.25 - 2 µg/ml. Fixation/Permeabilization: PFA/Triton X-100.

## Target

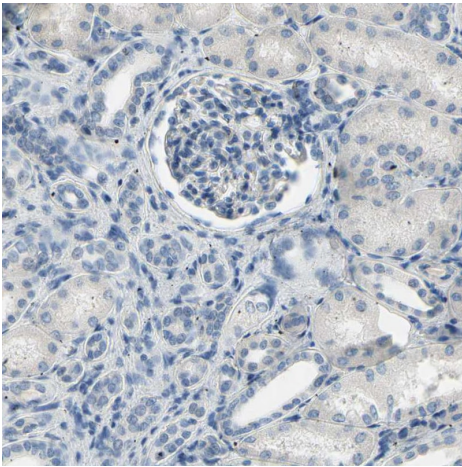
<b>Function</b>	Serine protease inhibitor, probably important for the anti-inflammatory and/or antimicrobial protection of mucous epithelia. Contribute to the integrity and protective barrier function of the skin by regulating the activity of defense-activating and desquamation-involved proteases. Inhibits KLK5, it's major target, in a pH-dependent manner. Inhibits KLK7, KLK14 CASP14, and trypsin.
<b>Tissue specificity</b>	Highly expressed in the thymus and stratum corneum. Also found in the oral mucosa, parathyroid gland, Bartholin's glands, tonsils, and vaginal epithelium. Very low levels are detected in lung, kidney, and prostate.
<b>Involvement in disease</b>	Defects in SPINK5 are the cause of Netherton syndrome (NETH) [MIM:256500]. NETH is an autosomal recessive congenital ichthyosis associated with hair shaft abnormalities and anomalies of the immune system. Typical features are ichthyosis linearis circumflexa, ichthyosiform erythroderma, trichorrhexis invaginata (bamboo hair), atopic dermatitis, and hayfever. High postnatal mortality is due to failure to thrive, infections and hypernatremic dehydration.
<b>Sequence similarities</b>	Contains 15 Kazal-like domains.
<b>Domain</b>	Contains at least one active inhibitory domain for trypsin (domain 6).
<b>Post-translational modifications</b>	Proteolytically processed by furin in individual domains (D1, D5, D6, D8 through D11, and D9 through D15) exhibiting various inhibitory potentials for multiple proteases.
<b>Cellular localization</b>	Secreted.

## Images



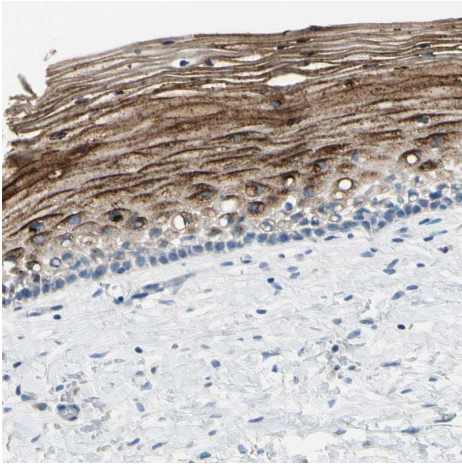
Immunocytochemistry/ Immunofluorescence - Anti-SPINK5/LEKTI antibody (ab246890)

PFA-fixed, Triton X-100 permeabilized HeLa (human epithelial cell line from cervix adenocarcinoma) cells stained for SPINK5/LEKTI (green) using ab246890 at 4 µg/ml in ICC/IF.



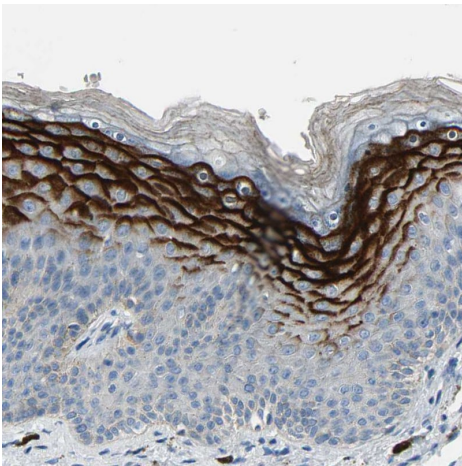
Immunohistochemistry (Formalin/PFA-fixed paraffin-embedded sections) - Anti-SPINK5/LEKTI antibody (ab246890)

Paraffin-embedded human kidney tissue stained for SPINK5/LEKTI using ab246890 at 1/200 dilution in immunohistochemical analysis.



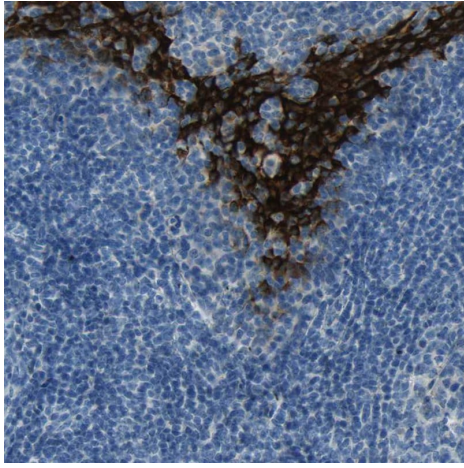
Immunohistochemistry (Formalin/PFA-fixed paraffin-embedded sections) - Anti-SPINK5/LEKTI antibody (ab246890)

Paraffin-embedded human uterine cervix tissue stained for SPINK5/LEKTI using ab246890 at 1/200 dilution in immunohistochemical analysis.



Immunohistochemistry (Formalin/PFA-fixed paraffin-embedded sections) - Anti-SPINK5/LEKTI antibody (ab246890)

Paraffin-embedded human skin tissue stained for SPINK5/LEKTI using ab246890 at 1/200 dilution in immunohistochemical analysis.



Immunohistochemistry (Formalin/PFA-fixed paraffin-embedded sections) - Anti-SPINK5/LEKTI antibody (ab246890)

Paraffin-embedded human tonsil tissue stained for SPINK5/LEKTI using ab246890 at 1/200 dilution in immunohistochemical analysis.

**Please note:** All products are "FOR RESEARCH USE ONLY. NOT FOR USE IN DIAGNOSTIC PROCEDURES"

#### Our Abpromise to you: Quality guaranteed and expert technical support

---

- Replacement or refund for products not performing as stated on the datasheet
- Valid for 12 months from date of delivery
- Response to your inquiry within 24 hours
- We provide support in Chinese, English, French, German, Japanese and Spanish
- Extensive multi-media technical resources to help you
- We investigate all quality concerns to ensure our products perform to the highest standards

If the product does not perform as described on this datasheet, we will offer a refund or replacement. For full details of the Abpromise, please visit <https://www.abcam.com/abpromise> or contact our technical team.

#### Terms and conditions

---

- Guarantee only valid for products bought direct from Abcam or one of our authorized distributors