

Anti-SPNS2 antibody ab82629

[2 References](#) [1 Image](#)

Overview

| | |
|----------------------------|---|
| Product name | Anti-SPNS2 antibody |
| Description | Rabbit polyclonal to SPNS2 |
| Host species | Rabbit |
| Tested applications | Suitable for: IHC-P |
| Species reactivity | Reacts with: Mouse, Rat, Human, Drosophila melanogaster, Monkey |
| Immunogen | Synthetic peptide. This information is proprietary to Abcam and/or its suppliers. |
| Positive control | IHC: rat ovary tissue |
| General notes | <p>Storage of very dilute antibody solutions is not recommended</p> <p>The Life Science industry has been in the grips of a reproducibility crisis for a number of years. Abcam is leading the way in addressing this with our range of recombinant monoclonal antibodies and knockout edited cell lines for gold-standard validation. Please check that this product meets your needs before purchasing.</p> <p>If you have any questions, special requirements or concerns, please send us an inquiry and/or contact our Support team ahead of purchase. Recommended alternatives for this product can be found below, along with publications, customer reviews and Q&As</p> |

Properties

| | |
|-----------------------------|--|
| Form | Liquid |
| Storage instructions | Shipped at 4°C. Upon delivery aliquot and store at -20°C. Avoid freeze / thaw cycles. |
| Storage buffer | Preservative: 0.02% Sodium azide |
| | Stabilization buffer: contains Phosphate buffer; stabilizing proteins; cryogenic protectant and antibody stabilizer. |
| Purity | Immunogen affinity purified |
| Clonality | Polyclonal |
| Isotype | IgG |

Applications

The Abpromise guarantee

Our **Abpromise guarantee** covers the use of ab82629 in the following tested applications.

The application notes include recommended starting dilutions; optimal dilutions/concentrations should be determined by the end user.

| Application | Abreviews | Notes |
|-------------|-----------|---------------|
| IHC-P | | 1/50 - 1/150. |

Target

Function

Sphingolipid transporter required for migration of myocardial precursors. Transports sphingosine 1-phosphate (S1P), a secreted lipid mediator that plays critical roles in cardiovascular, immunological, and neural development and function. Mediates the export of S1P from cells in the extraembryonic yolk syncytial layer (YSL), thereby regulating myocardial precursor migration.

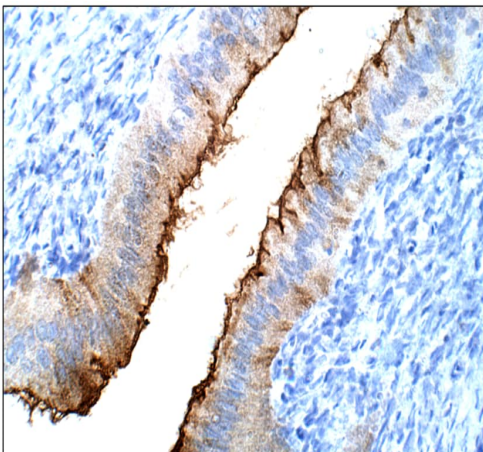
Sequence similarities

Belongs to the major facilitator superfamily. Spinster (TC 2.A.1.49) family.

Cellular localization

Membrane.

Images



Immunohistochemistry analysis of formalin-fixed paraffin-embedded rat ovary tissue staining SPNS2 with ab82629 at 1/50 dilution with DAB and Hematoxylin QS counterstaining.

Immunohistochemistry (Formalin/PFA-fixed paraffin-embedded sections) - Anti-SPNS2 antibody (ab82629)

Please note: All products are "FOR RESEARCH USE ONLY. NOT FOR USE IN DIAGNOSTIC PROCEDURES"

Our Abpromise to you: Quality guaranteed and expert technical support

- Replacement or refund for products not performing as stated on the datasheet
- Valid for 12 months from date of delivery
- Response to your inquiry within 24 hours
- We provide support in Chinese, English, French, German, Japanese and Spanish

- Extensive multi-media technical resources to help you
- We investigate all quality concerns to ensure our products perform to the highest standards

If the product does not perform as described on this datasheet, we will offer a refund or replacement. For full details of the Abpromise, please visit <https://www.abcam.com/abpromise> or contact our technical team.

Terms and conditions

- Guarantee only valid for products bought direct from Abcam or one of our authorized distributors