



### Anti-SPPL2 $\alpha$ antibody ab237691

3 Images

#### Overview

|                            |   |
|----------------------------|---|
| <b>Product name</b>        | Anti-SPPL2 $\alpha$ antibody  |
| <b>Description</b>         | Rabbit polyclonal to SPPL2 $\alpha$   |
| <b>Host species</b>        | Rabbit  |
| <b>Tested applications</b> | <b>Suitable for:</b> ICC/IF, IHC-P, WB  |
| <b>Species reactivity</b>  | <b>Reacts with:</b> Human   |
| <b>Immunogen</b>           | Recombinant fragment corresponding to Human SPPL2 $\alpha$ aa 1-200.<br>Database link: <a href="#">Q8TCT8</a>   |
|                            | <div>  <a href="#">Run BLAST with</a> </div> <div>  <a href="#">Run BLAST with</a> </div>   |
| <b>Positive control</b>    | WB: Jurkat whole cell lysate. ICC/IF: HeLa cells. IHC-P: Human prostate cancer tissue.  |
| <b>General notes</b>       | <p>The Life Science industry has been in the grips of a reproducibility crisis for a number of years. Abcam is leading the way in addressing this with our range of recombinant monoclonal antibodies and knockout edited cell lines for gold-standard validation. Please check that this product meets your needs before purchasing.</p> <p>If you have any questions, special requirements or concerns, please send us an inquiry and/or contact our Support team ahead of purchase. Recommended alternatives for this product can be found below, along with publications, customer reviews and Q&amp;As</p> |

#### Properties

|                             |   |
|-----------------------------|---|
| <b>Form</b>                 | Liquid  |
| <b>Storage instructions</b> | Shipped at 4°C. Store at +4°C short term (1-2 weeks). Upon delivery aliquot. Store at -20°C long term. Avoid freeze / thaw cycle. |
| <b>Storage buffer</b>       | pH: 7.40<br>Preservative: 0.03% Proclin 300<br>Constituents: 50% Glycerol (glycerin, glycerine), PBS                              |
| <b>Purity</b>               | Protein G purified  |
| <b>Purification notes</b>   | Purity greater than 95%.  |
| <b>Clonality</b>            | Polyclonal  |
| <b>Isotype</b>              | IgG   |

## Applications

### The Abpromise guarantee

Our **Abpromise guarantee** covers the use of ab237691 in the following tested applications.

The application notes include recommended starting dilutions; optimal dilutions/concentrations should be determined by the end user.

| Application | Abreviews | Notes  |
|-------------|-----------|--|
| ICC/IF      |           | 1/50 - 1/200.  |
| IHC-P       |           | 1/20 - 1/200.  |
| WB          |           | 1/2000 - 1/5000. Predicted molecular weight: 58 kDa. |

## Target

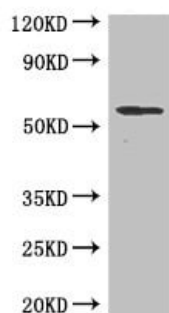
### Relevance

This protein, which may act as an intramembrane protease, contains an N-terminal protease-associated (PA) domain, several transmembrane regions, a hydrophilic loop, conservative sequences around the first and second aspartate residues, and an invariant PAL motif near the C terminus.

### Cellular localization

Cell Membrane; multi-pass membrane protein

## Images



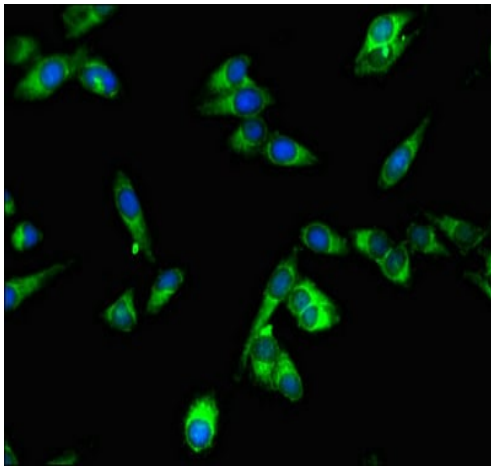
Western blot - Anti-SPPL2a antibody (ab237691)

Anti-SPPL2a antibody (ab237691) at 1/2000 dilution + Jurkat (human T cell leukemia cell line from peripheral blood) whole cell lysate

### Secondary

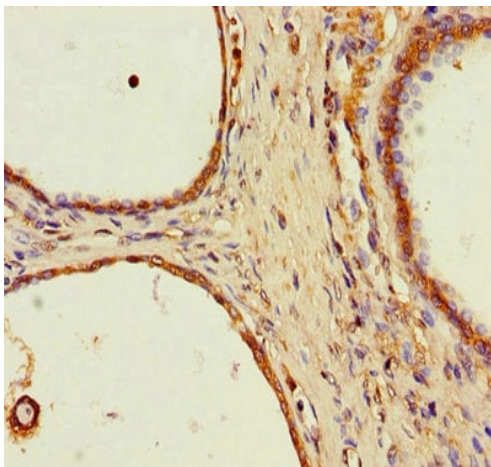
Goat polyclonal to rabbit IgG at 1/50000 dilution

**Predicted band size:** 58 kDa



Immunocytochemistry/ Immunofluorescence - Anti-SPPL2a antibody (ab237691)

HeLa (human epithelial cell line from cervix adenocarcinoma) cells stained for SPPL2a (Green) using ab237691 at 1/100 dilution in ICC/IF analysis, followed by Alexa Fluor<sup>®</sup> 488-conjugated Goat Anti-Rabbit IgG (H+L) secondary antibody.



Immunohistochemistry (Formalin/PFA-fixed paraffin-embedded sections) - Anti-SPPL2a antibody (ab237691)

Paraffin-embedded human prostate cancer tissue stained for SPPL2a using ab237691 at 1/100 dilution in immunohistochemical analysis.

**Please note:** All products are "FOR RESEARCH USE ONLY. NOT FOR USE IN DIAGNOSTIC PROCEDURES"

### **Our Abpromise to you: Quality guaranteed and expert technical support**

---

- Replacement or refund for products not performing as stated on the datasheet
- Valid for 12 months from date of delivery
- Response to your inquiry within 24 hours
  
- We provide support in Chinese, English, French, German, Japanese and Spanish
- Extensive multi-media technical resources to help you
- We investigate all quality concerns to ensure our products perform to the highest standards

If the product does not perform as described on this datasheet, we will offer a refund or replacement. For full details of the Abpromise, please visit <https://www.abcam.com/abpromise> or contact our technical team.

### **Terms and conditions**

---

- Guarantee only valid for products bought direct from Abcam or one of our authorized distributors