


Product datasheet

Anti-Sprouty 4/Spry-4 antibody [EPR12127] ab176337

Recombinant RabMAb

[1 References](#) [3 Images](#)

Overview

Product name	Anti-Sprouty 4/Spry-4 antibody [EPR12127]
Description	Rabbit monoclonal [EPR12127] to Sprouty 4/Spry-4
Host species	Rabbit
Tested applications	Suitable for: IP, WB Unsuitable for: Flow Cyt, ICC/IF or IHC-P
Species reactivity	Reacts with: Human Predicted to work with: Mouse, Rat 
Immunogen	Synthetic peptide. This information is proprietary to Abcam and/or its suppliers.
Positive control	WB: HepG2, MCF7, HeLa, and K562 cell lysates. IP: MCF7 cell lysate.
General notes	<p>This product is a recombinant monoclonal antibody, which offers several advantages including:</p> <ul style="list-style-type: none"> - High batch-to-batch consistency and reproducibility - Improved sensitivity and specificity - Long-term security of supply - Animal-free production <p>For more information see here.</p> <p>Our RabMAb[®] technology is a patented hybridoma-based technology for making rabbit monoclonal antibodies. For details on our patents, please refer to RabMAb[®] patents.</p>

Properties

Form	Liquid
Storage instructions	Shipped at 4°C. Store at +4°C short term (1-2 weeks). Upon delivery aliquot. Store at -20°C long term. Avoid freeze / thaw cycle.
Storage buffer	pH: 7.20 Preservative: 0.01% Sodium azide Constituents: 9% PBS, 40% Glycerol (glycerin, glycerine), 0.05% BSA, 50% Tissue culture supernatant
Purity	Tissue culture supernatant
Clonality	Monoclonal

Clone number	EPR12127
Isotype	IgG

Applications

The Abpromise guarantee Our **Abpromise guarantee** covers the use of ab176337 in the following tested applications. The application notes include recommended starting dilutions; optimal dilutions/concentrations should be determined by the end user.

Application	Abreviews	Notes
IP		1/10 - 1/100.
WB		1/1000 - 1/10000. Predicted molecular weight: 33 kDa.

Application notes Is unsuitable for Flow Cyt, ICC/IF or IHC-P.

Target

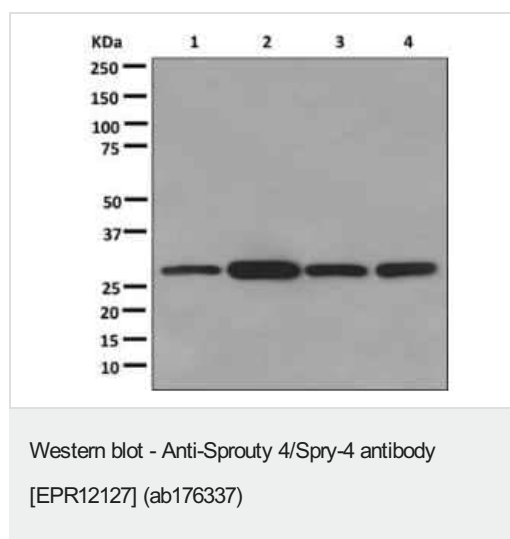
Function Suppresses the insulin receptor and EGFR-transduced MAPK signaling pathway, but does not inhibit MAPK activation by a constitutively active mutant Ras. Probably impairs the formation of GTP-Ras.

Sequence similarities Belongs to the sprouty family.
Contains 1 SPR (sprouty) domain.

Domain The Cys-rich domain is responsible for the localization of the protein to the membrane ruffles.

Cellular localization Cytoplasm. Cell projection > ruffle membrane.

Images



All lanes : Anti-Sprouty 4/Spry-4 antibody [EPR12127] (ab176337) at 1/1000 dilution

Lane 1 : HepG2 cell lysate

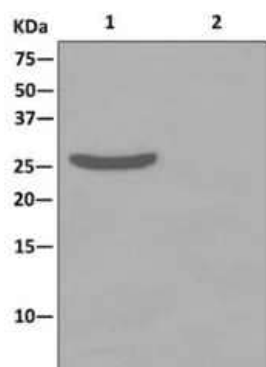
Lane 2 : MCF7 cell lysate

Lane 3 : HeLa cell lysate

Lane 4 : K562 cell lysate

Lysates/proteins at 10 µg per lane.

Predicted band size: 33 kDa



Western blot analysis on immunoprecipitation pellet from MCF-7 cells lysate (lane 1) or 1XPBS (negative control, lane 2) using ab176337 at 1/10 dilution and HRP-conjugated anti-rabbit IgG preferentially detecting the non-reduced form of rabbit IgG.

Immunoprecipitation - Anti-Sprouty 4/Spry-4 antibody [EPR12127] (ab176337)

Why choose a recombinant antibody?



Research with confidence
Consistent and reproducible results



Long-term and scalable supply
Recombinant technology



Success from the first experiment
Confirmed specificity



Ethical standards compliant
Animal-free production

Anti-Sprouty 4/Spry-4 antibody [EPR12127] (ab176337)

Please note: All products are "FOR RESEARCH USE ONLY. NOT FOR USE IN DIAGNOSTIC PROCEDURES"

Our Abpromise to you: Quality guaranteed and expert technical support

- Replacement or refund for products not performing as stated on the datasheet
- Valid for 12 months from date of delivery
- Response to your inquiry within 24 hours
- We provide support in Chinese, English, French, German, Japanese and Spanish
- Extensive multi-media technical resources to help you
- We investigate all quality concerns to ensure our products perform to the highest standards

If the product does not perform as described on this datasheet, we will offer a refund or replacement. For full details of the Abpromise, please visit <https://www.abcam.com/abpromise> or contact our technical team.

Terms and conditions

- Guarantee only valid for products bought direct from Abcam or one of our authorized distributors