


Anti-Spry-2 antibody ab85670

★★★★☆ [3 Abreviews](#) [9 References](#) [3 Images](#)

Overview

Product name	Anti-Spry-2 antibody
Description	Rabbit polyclonal to Spry-2
Host species	Rabbit
Specificity	From Mar 2024, QC testing of replenishment batches of this polyclonal changed. All tested and expected application and reactive species combinations are still covered by our Abcam product promise. However, we no longer test all applications. For more information on a specific batch, please contact our Scientific Support who will be happy to help. You may also be interested in our alternative recombinant antibody, ab180527 .
Tested applications	Suitable for: WB, ICC/IF, IHC-P
Species reactivity	Reacts with: Rat, Human Predicted to work with: Mouse, Cynomolgus monkey, Orangutan 
Immunogen	Synthetic peptide corresponding to Human Spry-2 aa 50-150 conjugated to keyhole limpet haemocyanin. (Peptide available as ab101081)
Positive control	This antibody gave a positive signal in the following lysates: Human Brain Tissue; Human Lung Tissue; Human Heart Tissue; Jurkat Whole Cell Lysate; Caco2 Whole Cell Lysate; SW480 Whole Cell Lysate. IHC-P: Human skin melanoma FFPE tissue sections
General notes	<p>The Life Science industry has been in the grips of a reproducibility crisis for a number of years. Abcam is leading the way in addressing this with our range of recombinant monoclonal antibodies and knockout edited cell lines for gold-standard validation. Please check that this product meets your needs before purchasing.</p> <p>If you have any questions, special requirements or concerns, please send us an inquiry and/or contact our Support team ahead of purchase. Recommended alternatives for this product can be found below, along with publications, customer reviews and Q&As</p>

Properties

Form	Liquid
Storage instructions	Shipped at 4°C. Store at +4°C short term (1-2 weeks). Upon delivery aliquot. Store at -20°C or -80°C. Avoid freeze / thaw cycle.
Storage buffer	pH: 7.40

Preservative: 0.02% Sodium azide
Constituent: PBS

Batches of this product that have a concentration < 1mg/ml may have BSA added as a stabilising agent. If you would like information about the formulation of a specific lot, please contact our scientific support team who will be happy to help.

Purity Immunogen affinity purified
Clonality Polyclonal
Isotype IgG

Applications

The Abpromise guarantee Our **Abpromise guarantee** covers the use of ab85670 in the following tested applications. The application notes include recommended starting dilutions; optimal dilutions/concentrations should be determined by the end user.

Application	Abreviews	Notes
WB	★★★★☆ (1)	Use a concentration of 1 µg/ml. Detects a band of approximately 35 kDa (predicted molecular weight: 35 kDa).
ICC/IF		Use a concentration of 10 µg/ml.
IHC-P		Use a concentration of 1 µg/ml. Perform heat mediated antigen retrieval before commencing with IHC staining protocol.

Target

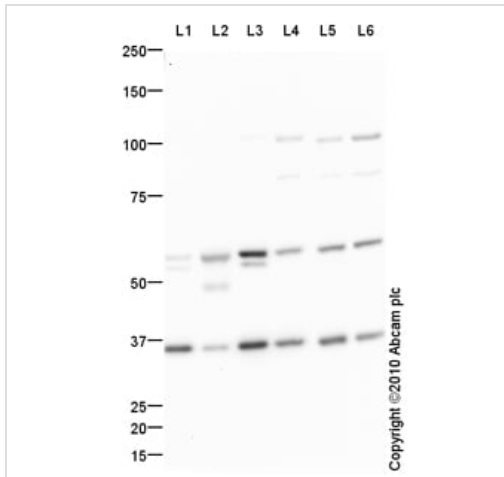
Function May function as an antagonist of fibroblast growth factor (FGF) pathways and may negatively modulate respiratory organogenesis.

Sequence similarities Belongs to the sprouty family.
Contains 1 SPR (sprouty) domain.

Domain The Cys-rich domain is responsible for the localization of the protein to the membrane ruffles.

Cellular localization Cytoplasm > cytoskeleton. Cell projection > ruffle membrane. Associated with microtubules in unstimulated cells but is translocated to the membrane ruffles in cells stimulated with EGF.

Images



Western blot - Anti-Spry-2 antibody (ab85670)

All lanes : Anti-Spry-2 antibody (ab85670) at 1 µg/ml

Lane 1 : Human brain tissue lysate - total protein ([ab29466](#))

Lane 2 : Lung (Human) Tissue Lysate

Lane 3 : Human heart tissue lysate - total protein ([ab29431](#))

Lane 4 : Jurkat (Human T cell lymphoblast-like cell line) Whole Cell Lysate

Lane 5 : Caco 2 (Human colonic carcinoma cell line) Whole Cell Lysate

Lane 6 : SW480 (Human colon adenocarcinoma cell line) Whole Cell Lysate

Lysates/proteins at 10 µg per lane.

Secondary

All lanes : Goat Anti-Rabbit IgG H&L (HRP) preadsorbed ([ab97080](#)) at 1/5000 dilution

Developed using the ECL technique.

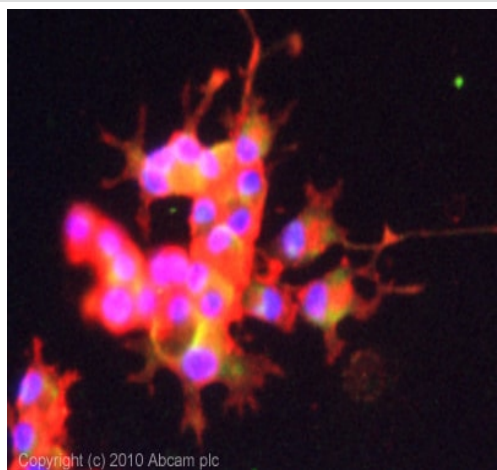
Performed under reducing conditions.

Predicted band size: 35 kDa

Observed band size: 35 kDa

Additional bands at: 100 kDa, 55 kDa. We are unsure as to the identity of these extra bands.

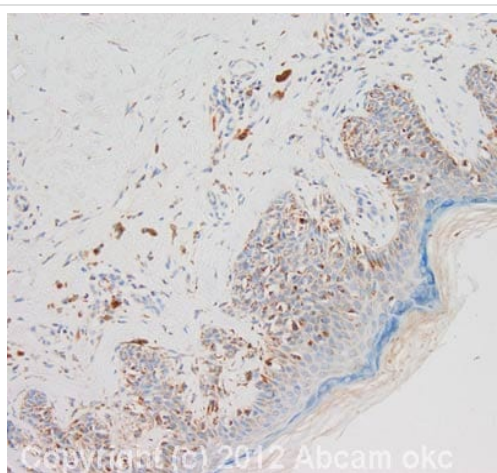
Exposure time: 2 minutes



Copyright (c) 2010 Abcam plc

Immunocytochemistry/ Immunofluorescence - Anti-Spry-2 antibody (ab85670)

ICC/IF image of ab85670 stained PC12 cells. The cells were 4% PFA fixed (10 min) and then incubated in 1%BSA / 10% normal goat serum / 0.3M glycine in 0.1% PBS-Tween for 1h to permeabilise the cells and block non-specific protein-protein interactions. The cells were then incubated with the antibody (ab85670, 10µg/ml) overnight at +4°C. The secondary antibody (green) was Alexa Fluor® 488 goat anti-rabbit IgG (H+L) used at a 1/1000 dilution for 1h. Alexa Fluor® 594 WGA was used to label plasma membranes (red) at a 1/200 dilution for 1h. DAPI was used to stain the cell nuclei (blue) at a concentration of 1.43µM. This antibody also gave a positive result in 100% methanol fixed (5 min) PC12 cells at 10µg/ml.



Copyright (c) 2012 Abcam okc

Immunohistochemistry (Formalin/PFA-fixed paraffin-embedded sections) - Anti-Spry-2 antibody (ab85670)

IHC image of Spry-2 staining in human skin melanoma formalin fixed paraffin embedded tissue section, performed on a Leica Bond™ system using the standard protocol F. The section was pre-treated using heat mediated antigen retrieval with sodium citrate buffer (pH6, epitope retrieval solution 1) for 20 mins. The section was then incubated with ab85670, 1µg/ml, for 15 mins at room temperature and detected using an HRP conjugated compact polymer system. DAB was used as the chromogen. The section was then counterstained with haematoxylin and mounted with DPX.

For other IHC staining systems (automated and non-automated) customers should optimize variable parameters such as antigen retrieval conditions, primary antibody concentration and antibody incubation times.

Please note: All products are "FOR RESEARCH USE ONLY. NOT FOR USE IN DIAGNOSTIC PROCEDURES"

Our Promise to you: Quality guaranteed and expert technical support

- Replacement or refund for products not performing as stated on the datasheet
- Valid for 12 months from date of delivery

- Response to your inquiry within 24 hours
- We provide support in Chinese, English, French, German, Japanese and Spanish
- Extensive multi-media technical resources to help you
- We investigate all quality concerns to ensure our products perform to the highest standards

If the product does not perform as described on this datasheet, we will offer a refund or replacement. For full details of the Abpromise, please visit <https://www.abcam.com/abpromise> or contact our technical team.

Terms and conditions

- Guarantee only valid for products bought direct from Abcam or one of our authorized distributors