



Anti-SPTLC3 antibody ab237532

6 Images

Overview

Product name	Anti-SPTLC3 antibody
Description	Rabbit polyclonal to SPTLC3
Host species	Rabbit
Tested applications	Suitable for: WB, IHC-P, ICC/IF
Species reactivity	Reacts with: Mouse, Rat, Human
Immunogen	Recombinant fragment corresponding to Human SPTLC3 aa 1-100. Database link: Q9NUV7
	<div>  Run BLAST with </div> <div>  Run BLAST with </div>
Positive control	WB: Mouse liver and kidney lysates; Rat heart and kidney lysates; U-87 MG, HepG2, HEK-293T and A549 whole cell lysates. IHC-P: Human liver cancer tissue. ICC/IF: HepG2 cells.
General notes	<p>The Life Science industry has been in the grips of a reproducibility crisis for a number of years. Abcam is leading the way in addressing this with our range of recombinant monoclonal antibodies and knockout edited cell lines for gold-standard validation. Please check that this product meets your needs before purchasing.</p> <p>If you have any questions, special requirements or concerns, please send us an inquiry and/or contact our Support team ahead of purchase. Recommended alternatives for this product can be found below, along with publications, customer reviews and Q&As</p>

Properties

Form	Liquid
Storage instructions	Shipped at 4°C. Store at +4°C short term (1-2 weeks). Upon delivery aliquot. Store at -20°C long term. Avoid freeze / thaw cycle.
Storage buffer	pH: 7.40 Preservative: 0.03% Proclin 300 Constituents: 50% Glycerol (glycerin, glycerine), PBS
Purity	Protein G purified
Purification notes	Purity greater than 95%
Clonality	Polyclonal
Isotype	IgG

Applications

The Abpromise guarantee

Our **Abpromise guarantee** covers the use of ab237532 in the following tested applications.

The application notes include recommended starting dilutions; optimal dilutions/concentrations should be determined by the end user.

Application	Abreviews	Notes
WB		1/1000 - 1/5000. Predicted molecular weight: 62 kDa.
IHC-P		1/200 - 1/500.
ICC/IF		1/50 - 1/200.

Target

Function

Serine palmitoyltransferase (SPT). The heterodimer formed with LCB1/SPTLC1 constitutes the catalytic core. The composition of the serine palmitoyltransferase (SPT) complex determines the substrate preference. The SPTLC1-SPTLC3-SSSPTA isozyme uses both C14-CoA and C16-CoA as substrates, while the SPTLC1-SPTLC3-SSSPTB has the ability to use a broader range of acyl-CoAs without apparent preference.

Tissue specificity

Expressed in most tissues, except peripheral blood cells and bone marrow, with highest levels in heart, kidney, liver, uterus and skin.

Pathway

Lipid metabolism; sphingolipid metabolism.

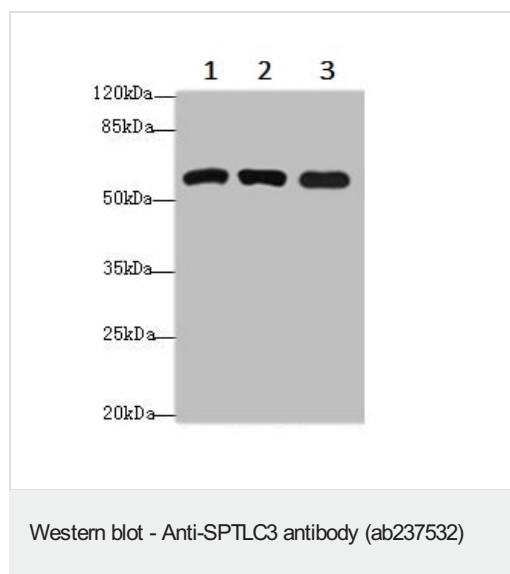
Sequence similarities

Belongs to the class-II pyridoxal-phosphate-dependent aminotransferase family.

Cellular localization

Endoplasmic reticulum membrane.

Images



All lanes : Anti-SPTLC3 antibody (ab237532) at 1/1000 dilution

Lane 1 : Mouse liver tissue lysate

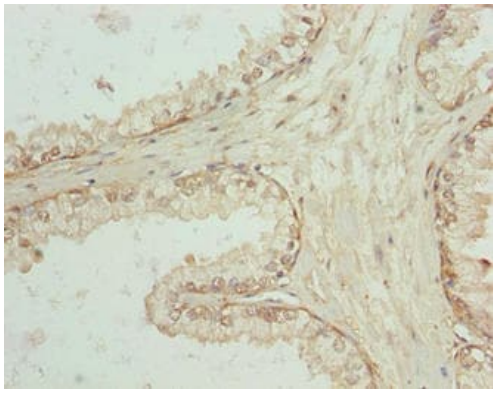
Lane 2 : Mouse kidney tissue lysate

Lane 3 : U-87 MG (Human glioblastoma-astrocytoma epithelial cell line) whole cell lysate

Secondary

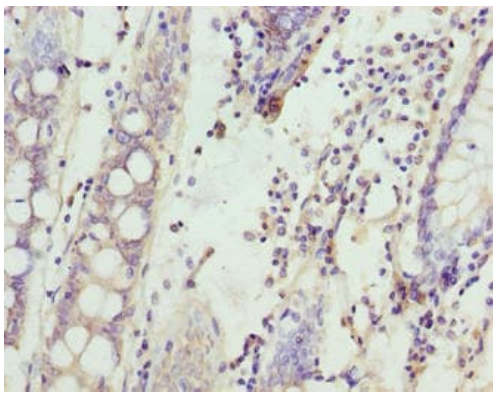
All lanes : Goat polyclonal to Rabbit IgG at 1/10000 dilution

Predicted band size: 62 kDa



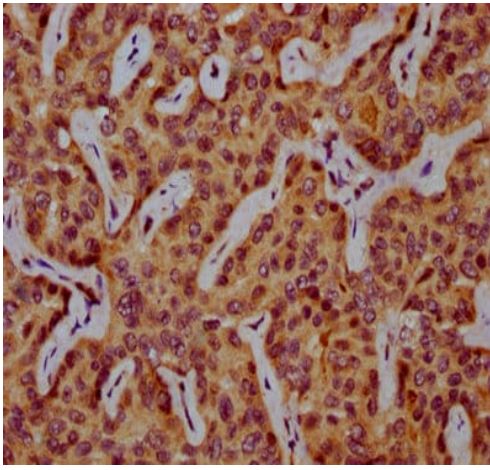
Immunohistochemistry (Formalin/PFA-fixed paraffin-embedded sections) staining human prostate cancer using ab237532 at 1/100.

Immunohistochemistry (Formalin/PFA-fixed paraffin-embedded sections) - Anti-SPTLC3 antibody (ab237532)



Immunohistochemistry (Formalin/PFA-fixed paraffin-embedded sections) staining human colon cancer using ab237532 at 1/100.

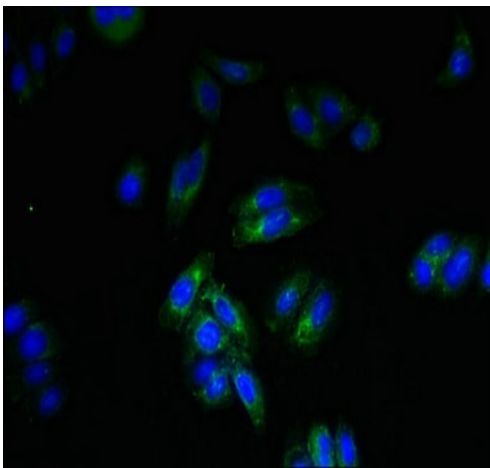
Immunohistochemistry (Formalin/PFA-fixed paraffin-embedded sections) - Anti-SPTLC3 antibody (ab237532)



Immunohistochemistry (Formalin/PFA-fixed paraffin-embedded sections) - Anti-SPTLC3 antibody (ab237532)

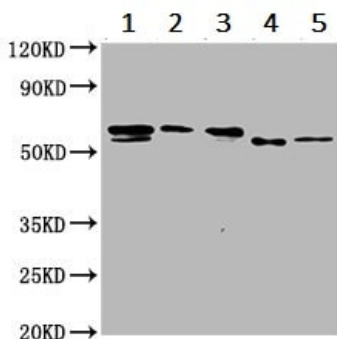
Paraffin-embedded human liver cancer tissue stained for SPTLC3 using ab237532 at 1/300 dilution in immunohistochemical analysis.

After dewaxing and hydration, antigen retrieval was mediated by high pressure in a citrate buffer (pH 6.0). Section was blocked with 10% normal goat serum 30 minutes at RT. Then primary antibody (1% BSA) was incubated at 4°C overnight. The primary is detected by a biotinylated secondary antibody and visualized tissue using an HRP conjugated SP system.



Immunocytochemistry/ Immunofluorescence - Anti-SPTLC3 antibody (ab237532)

HepG2 (Human liver hepatocellular carcinoma cell line) cells stained for SPTLC3 (green) using ab237532 at 1/100 dilution in ICC/IF. Secondary antibody is an Alexa-Fluor® 488-conjugated Goat Anti-Rabbit IgG (H+L).



Western blot - Anti-SPTLC3 antibody (ab237532)

All lanes : Anti-SPTLC3 antibody (ab237532) at 1/1000 dilution

Lane 1 : HepG2 (Human liver hepatocellular carcinoma cell line) whole cell lysate

Lane 2 : HEK-293T (Human epithelial cell line from embryonic kidney transformed with large T antigen) whole cell lysate

Lane 3 : A549 (Human lung carcinoma cell line) whole cell lysate

Lane 4 : Rat heart tissue lysate

Lane 5 : Rat kidney tissue lysate

Secondary

All lanes : Goat polyclonal to rabbit IgG at 1/50000 dilution

Predicted band size: 62 kDa

Please note: All products are "FOR RESEARCH USE ONLY. NOT FOR USE IN DIAGNOSTIC PROCEDURES"

Our Abpromise to you: Quality guaranteed and expert technical support

- Replacement or refund for products not performing as stated on the datasheet
- Valid for 12 months from date of delivery
- Response to your inquiry within 24 hours
- We provide support in Chinese, English, French, German, Japanese and Spanish
- Extensive multi-media technical resources to help you
- We investigate all quality concerns to ensure our products perform to the highest standards

If the product does not perform as described on this datasheet, we will offer a refund or replacement. For full details of the Abpromise, please visit <https://www.abcam.com/abpromise> or contact our technical team.

Terms and conditions

- Guarantee only valid for products bought direct from Abcam or one of our authorized distributors