


Product datasheet

Anti-SR protein repeat/SRSF6 antibody [EPR9231] ab140623

KO VALIDATED Recombinant RabMAB[®]

[3 References](#) [8 Images](#)

Overview

Product name	Anti-SR protein repeat/SRSF6 antibody [EPR9231]
Description	Rabbit monoclonal [EPR9231] to SR protein repeat/SRSF6
Host species	Rabbit
Tested applications	Suitable for: WB, IHC-P Unsuitable for: Flow Cyt, ICC/IF or IP
Species reactivity	Reacts with: Human Predicted to work with: Mouse, Rat 
Immunogen	Synthetic peptide within Human SR protein repeat/SRSF6 aa 150-250. The exact sequence is proprietary.
Positive control	WB: HEK293T, K562, Jurkat and HeLa whole cell lysates. IHC-P: Human gastric, ovarian and brain carcinoma tissue; Human uterus and brain tissue.
General notes	This product is a recombinant monoclonal antibody, which offers several advantages including: <ul style="list-style-type: none">- High batch-to-batch consistency and reproducibility- Improved sensitivity and specificity- Long-term security of supply- Animal-free production For more information see here . Our RabMAB [®] technology is a patented hybridoma-based technology for making rabbit monoclonal antibodies. For details on our patents, please refer to RabMAB[®] patents .

Properties

Form	Liquid
Storage instructions	Shipped at 4°C. Store at -20°C.
Storage buffer	pH: 7.2 Preservative: 0.01% Sodium azide Constituents: 9% PBS, 40% Glycerol (glycerin, glycerine), 0.05% BSA, 50% Tissue culture supernatant

Purity	Protein A purified
Clonality	Monoclonal
Clone number	EPR9231
Isotype	IgG

Applications

The Abpromise guarantee Our **Abpromise guarantee** covers the use of ab140623 in the following tested applications. The application notes include recommended starting dilutions; optimal dilutions/concentrations should be determined by the end user.

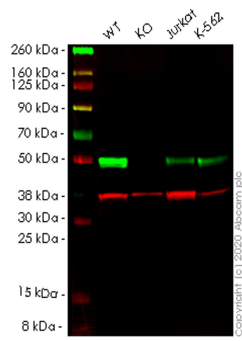
Application	Abreviews	Notes
WB		1/1000 - 1/10000. Predicted molecular weight: 40 kDa.
IHC-P		1/50 - 1/100. Perform heat mediated antigen retrieval with citrate buffer pH 6 before commencing with IHC staining protocol.

Application notes Is unsuitable for Flow Cyt, ICC/IF or IP.

Target

Function	Plays a role in constitutive splicing and can modulate the selection of alternative splice sites. Represses the splicing of MAPT/Tau exon 10.
Sequence similarities	Belongs to the splicing factor SR family. Contains 2 RRM (RNA recognition motif) domains.
Post-translational modifications	Extensively phosphorylated on serine residues in the RS domain.
Cellular localization	Nucleus.

Images



Western blot - Anti-SR protein repeat/SRSF6 antibody [EPR9231] (ab140623)

All lanes : Anti-SR protein repeat/SRSF6 antibody [EPR9231] (ab140623) at 1/1000 dilution

Lane 1 : Wild-type HEK293T cell lysate

Lane 2 : SRSF6 knockout HEK293T cell lysate

Lane 3 : Jurkat cell lysate

Lane 4 : K-562 cell lysate

Lysates/proteins at 20 µg per lane.

Secondary

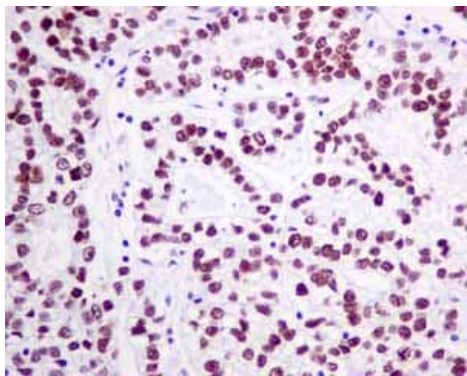
All lanes : Goat anti-Rabbit IgG H&L (IRDye® 800CW) preadsorbed (**ab216773**) at 1/10000 dilution

Predicted band size: 40 kDa

Observed band size: 48 kDa

Lanes 1-4: Merged signal (red and green). Green - ab140623 observed at 48 kDa. Red - loading control **ab8245** observed at 36 kDa.

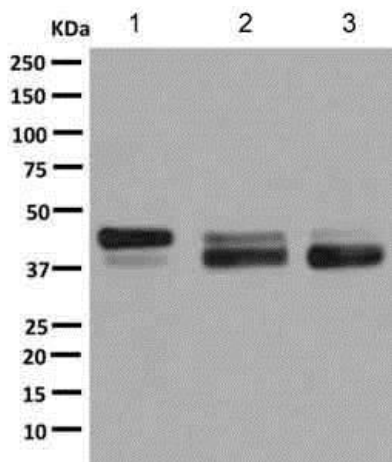
ab140623 Anti-SR protein repeat/SRSF6 antibody [EPR9231] was shown to specifically react with SR protein repeat/SRSF6 in wild-type HEK293T cells. Loss of signal was observed when knockout cell line **ab266529** (knockout cell lysate **ab258210**) was used. Wild-type and SR protein repeat/SRSF6 knockout samples were subjected to SDS-PAGE. ab140623 and Anti-GAPDH antibody [6C5] - Loading Control (**ab8245**) were incubated at room temperature for 2.5 hours at 1 in 1000 dilution and 1 in 20000 dilution respectively. Blots were developed with Goat anti-Rabbit IgG H&L (IRDye® 800CW) preadsorbed (**ab216773**) and Goat anti-Mouse IgG H&L (IRDye® 680RD) preadsorbed (**ab216776**) secondary antibodies at 1 in 20000 dilution for 1 hour at room temperature before imaging.



Immunohistochemistry (Formalin/PFA-fixed paraffin-embedded sections) - Anti-SR protein repeat/SRSF6 antibody [EPR9231] (ab140623)

Immunohistochemical analysis of paraffin-embedded Human gastric carcinoma tissue labelling SR protein repeat/SRSF6 with ab140623 at 1/50 dilution.

Perform heat mediated antigen retrieval with citrate buffer pH 6 before commencing with IHC staining protocol.



Western blot - Anti-SR protein repeat/SRSF6 antibody [EPR9231] (ab140623)

All lanes : Anti-SR protein repeat/SRSF6 antibody [EPR9231] (ab140623) at 1/1000 dilution

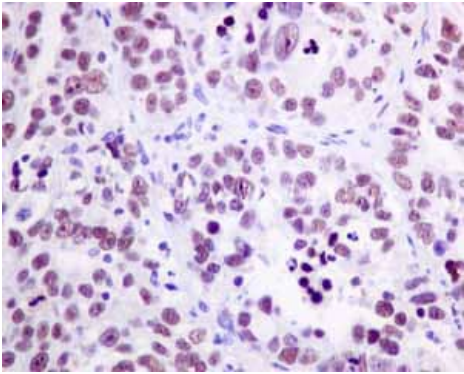
Lane 1 : K562 cell lysate

Lane 2 : Jurkat cell lysate

Lane 3 : HeLa cell lysate

Lysates/proteins at 10 µg per lane.

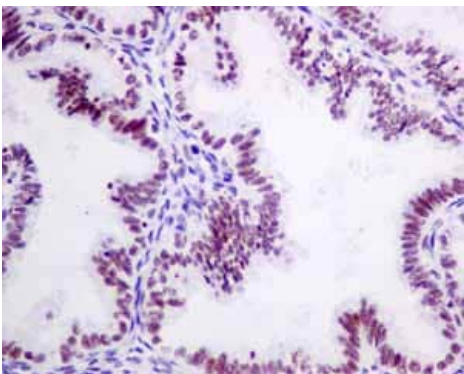
Predicted band size: 40 kDa



Immunohistochemistry (Formalin/PFA-fixed paraffin-embedded sections) - Anti-SR protein repeat/SRSF6 antibody [EPR9231] (ab140623)

Immunohistochemical analysis of paraffin embedded Human Ovarian carcinoma tissue using ab140623 showing +ve staining.

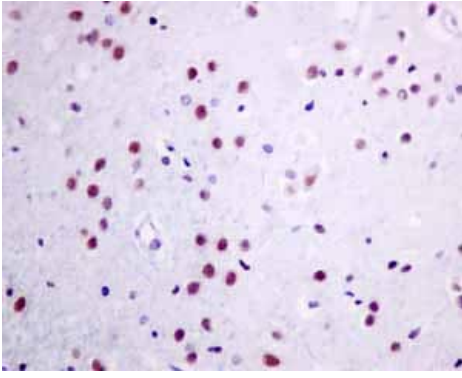
Perform heat mediated antigen retrieval with citrate buffer pH 6 before commencing with IHC staining protocol.



Immunohistochemistry (Formalin/PFA-fixed paraffin-embedded sections) - Anti-SR protein repeat/SRSF6 antibody [EPR9231] (ab140623)

Immunohistochemical analysis of paraffin embedded normal Human uterus tissue using ab140623 showing +ve staining.

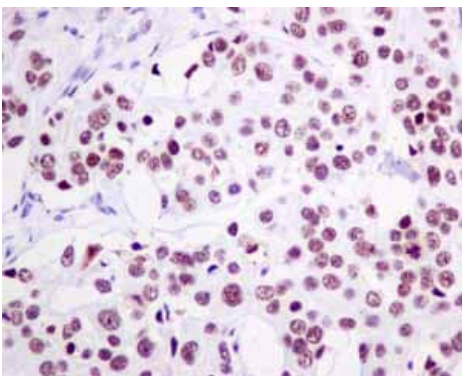
Perform heat mediated antigen retrieval with citrate buffer pH 6 before commencing with IHC staining protocol.



Immunohistochemical analysis of paraffin embedded normal Human brain tissue using ab140623 showing +ve staining.

Perform heat mediated antigen retrieval with citrate buffer pH 6 before commencing with IHC staining protocol.

Immunohistochemistry (Formalin/PFA-fixed paraffin-embedded sections) - Anti-SR protein repeat/SRSF6 antibody [EPR9231] (ab140623)



Immunohistochemical analysis of paraffin embedded Human Breast carcinoma tissue using ab140623 showing +ve staining.

Perform heat mediated antigen retrieval with citrate buffer pH 6 before commencing with IHC staining protocol.

Immunohistochemistry (Formalin/PFA-fixed paraffin-embedded sections) - Anti-SR protein repeat/SRSF6 antibody [EPR9231] (ab140623)

Why choose a recombinant antibody?



Research with confidence
Consistent and reproducible results



Long-term and scalable supply
Recombinant technology



Success from the first experiment
Confirmed specificity



Ethical standards compliant
Animal-free production

Anti-SR protein repeat/SRSF6 antibody [EPR9231] (ab140623)

Please note: All products are "FOR RESEARCH USE ONLY. NOT FOR USE IN DIAGNOSTIC PROCEDURES"

Our Abpromise to you: Quality guaranteed and expert technical support

- Replacement or refund for products not performing as stated on the datasheet
- Valid for 12 months from date of delivery
- Response to your inquiry within 24 hours

- We provide support in Chinese, English, French, German, Japanese and Spanish
- Extensive multi-media technical resources to help you
- We investigate all quality concerns to ensure our products perform to the highest standards

If the product does not perform as described on this datasheet, we will offer a refund or replacement. For full details of the Abpromise, please visit <https://www.abcam.com/abpromise> or contact our technical team.

Terms and conditions

- Guarantee only valid for products bought direct from Abcam or one of our authorized distributors