



## Product datasheet

### Anti-SRGAP2B antibody ab222902

2 Images

#### Overview

<b>Product name</b>	Anti-SRGAP2B antibody
<b>Description</b>	Rabbit polyclonal to SRGAP2B
<b>Host species</b>	Rabbit
<b>Tested applications</b>	<b>Suitable for:</b> WB, ICC/IF
<b>Species reactivity</b>	<b>Reacts with:</b> Mouse, Human
<b>Immunogen</b>	Recombinant fragment corresponding to Human SRGAP2B aa 50-150. Database link: <a href="#">P0DMP2</a>
	<div>  <a href="#">Run BLAST with</a> </div> <div>  <a href="#">Run BLAST with</a> </div>
<b>Positive control</b>	WB: Mouse heart tissue lysate. ICC/IF: MCF7 cells.
<b>General notes</b>	<p>The Life Science industry has been in the grips of a reproducibility crisis for a number of years. Abcam is leading the way in addressing this with our range of recombinant monoclonal antibodies and knockout edited cell lines for gold-standard validation. Please check that this product meets your needs before purchasing.</p> <p>If you have any questions, special requirements or concerns, please send us an inquiry and/or contact our Support team ahead of purchase. Recommended alternatives for this product can be found below, along with publications, customer reviews and Q&amp;As</p>

#### Properties

<b>Form</b>	Liquid
<b>Storage instructions</b>	Shipped at 4°C. Store at +4°C short term (1-2 weeks). Upon delivery aliquot. Store at -20°C. Avoid freeze / thaw cycle.
<b>Storage buffer</b>	pH: 7.40 Preservative: 0.03% Proclin 300 Constituents: 50% Glycerol (glycerin, glycerine), PBS
<b>Purity</b>	Protein G purified
<b>Purification notes</b>	Purity >95%
<b>Clonality</b>	Polyclonal
<b>Isotype</b>	IgG

## Applications

### The Abpromise guarantee

Our **Abpromise guarantee** covers the use of ab222902 in the following tested applications.

The application notes include recommended starting dilutions; optimal dilutions/concentrations should be determined by the end user.

Application	Abreviews	Notes
WB		1/1000 - 1/5000. Detects a band of approximately 54 kDa (predicted molecular weight: 53 kDa).
ICC/IF		1/50 - 1/200.

## Target

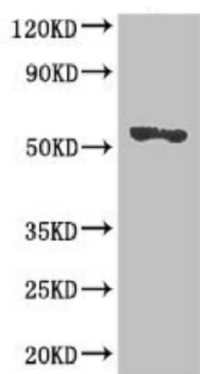
### Function

May regulate cell migration and differentiation through interaction with and inhibition of SRGAP2.

### Sequence similarities

Contains 1 F-BAR domain.

## Images



Western blot - Anti-SRGAP2B antibody (ab222902)

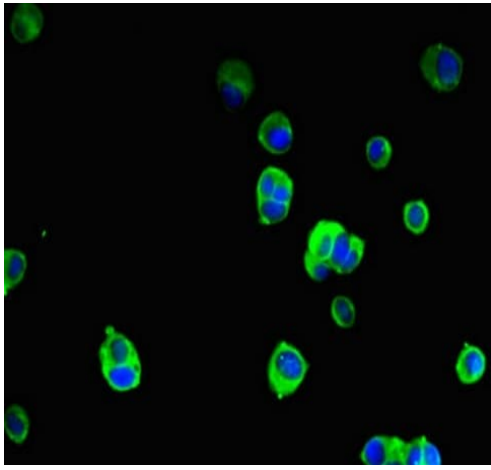
Anti-SRGAP2B antibody (ab222902) at 1/1000 dilution + mouse heart tissue lysate

### Secondary

Goat polyclonal to rabbit IgG at 1/500000 dilution

**Predicted band size:** 53 kDa

**Observed band size:** 54 kDa



Immunocytochemistry/ Immunofluorescence - Anti-SRGAP2B antibody (ab222902)

MCF7 (human breast adenocarcinoma cell line) cells stained for SRGAP2B (green) using ab222902 (1/100 dilution) in ICC/IF. Secondary: Alexa Fluor 488® conjugated Goat Anti-Rabbit IgG (H+L).

**Please note:** All products are "FOR RESEARCH USE ONLY. NOT FOR USE IN DIAGNOSTIC PROCEDURES"

#### Our Abpromise to you: Quality guaranteed and expert technical support

---

- Replacement or refund for products not performing as stated on the datasheet
- Valid for 12 months from date of delivery
- Response to your inquiry within 24 hours
- We provide support in Chinese, English, French, German, Japanese and Spanish
- Extensive multi-media technical resources to help you
- We investigate all quality concerns to ensure our products perform to the highest standards

If the product does not perform as described on this datasheet, we will offer a refund or replacement. For full details of the Abpromise, please visit <https://www.abcam.com/abpromise> or contact our technical team.

#### Terms and conditions

---

- Guarantee only valid for products bought direct from Abcam or one of our authorized distributors