


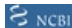


Product datasheet

Anti-SRPP antibody [10] ab138711

[1 Image](#)

Overview

Product name	Anti-SRPP antibody [10]
Description	Mouse monoclonal [10] to SRPP
Host species	Mouse
Specificity	ab138711 reacts with both recombinant and native SRPP (Hev b3).
Tested applications	Suitable for: WB
Species reactivity	Reacts with: Hevea brasiliensis
Immunogen	Fusion protein corresponding to Hevea brasiliensis SRPP.  Run BLAST with   Run BLAST with 
Positive control	Natural latex extract.
General notes	<p>The Life Science industry has been in the grips of a reproducibility crisis for a number of years. Abcam is leading the way in addressing this with our range of recombinant monoclonal antibodies and knockout edited cell lines for gold-standard validation. Please check that this product meets your needs before purchasing.</p> <p>If you have any questions, special requirements or concerns, please send us an inquiry and/or contact our Support team ahead of purchase. Recommended alternatives for this product can be found below, along with publications, customer reviews and Q&As</p>

Properties

Form	Liquid
Storage instructions	Shipped at 4°C. Upon delivery aliquot and store at -20°C or -80°C. Avoid repeated freeze / thaw cycles.
Storage buffer	pH: 7.4 Preservative: 0.1% Sodium azide Constituent: 99% PBS
Purity	Protein G purified
Clonality	Monoclonal
Clone number	10
Isotype	IgG1

Applications

The Abpromise guarantee

Our **Abpromise guarantee** covers the use of ab138711 in the following tested applications.

The application notes include recommended starting dilutions; optimal dilutions/concentrations should be determined by the end user.

Application	Abreviews	Notes
WB		1/2000. Predicted molecular weight: 23 kDa.

Target

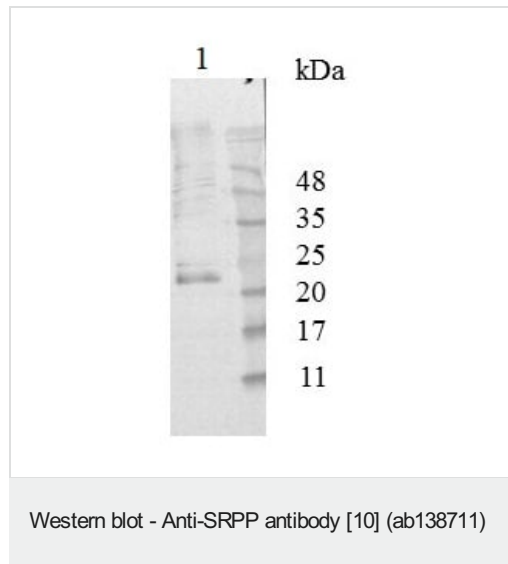
Relevance

Involved in the biosynthesis of rubber, an isoprenoid polymer (cis-1,4-polyisoprene).

Cellular localization

Cytoplasm. Note: Found in latex, the cytoplasm of laticifer cells. Tightly bound to small rubber particles.

Images



Anti-SRPP antibody [10] (ab138711) at 1/2000 dilution + 10x diluted natural latex extract at 10 µl

Predicted band size: 23 kDa

Please note: All products are "FOR RESEARCH USE ONLY. NOT FOR USE IN DIAGNOSTIC PROCEDURES"

Our Abpromise to you: Quality guaranteed and expert technical support

- Replacement or refund for products not performing as stated on the datasheet
- Valid for 12 months from date of delivery
- Response to your inquiry within 24 hours
- We provide support in Chinese, English, French, German, Japanese and Spanish
- Extensive multi-media technical resources to help you
- We investigate all quality concerns to ensure our products perform to the highest standards

If the product does not perform as described on this datasheet, we will offer a refund or replacement. For full details of the Abpromise, please visit <https://www.abcam.com/abpromise> or contact our technical team.

Terms and conditions

- Guarantee only valid for products bought direct from Abcam or one of our authorized distributors