

Anti-SRPRB antibody ab16146

[1 References](#) [1 Image](#)

Overview

Product name	Anti-SRPRB antibody
Description	Sheep polyclonal to SRPRB
Host species	Sheep
Tested applications	Suitable for: WB
Species reactivity	Reacts with: Dog
Immunogen	Synthetic peptide corresponding to Dog SRPRB aa 246-265 (C terminal).
Positive control	Canine microsomal protein.
General notes	<p>The Life Science industry has been in the grips of a reproducibility crisis for a number of years. Abcam is leading the way in addressing this with our range of recombinant monoclonal antibodies and knockout edited cell lines for gold-standard validation. Please check that this product meets your needs before purchasing.</p> <p>If you have any questions, special requirements or concerns, please send us an inquiry and/or contact our Support team ahead of purchase. Recommended alternatives for this product can be found below, along with publications, customer reviews and Q&As</p>

Properties

Form	Liquid
Storage instructions	Shipped at 4°C. Upon delivery aliquot and store at -20°C. Avoid freeze / thaw cycles.
Storage buffer	Preservative: 0.08% Sodium azide Constituent: PBS
Purity	Ammonium Sulphate Precipitation
Purification notes	Purified by ammonium sulfate precipitation This antibody is provided as a 0.2 µm sterile filtered solution.
Clonality	Polyclonal
Isotype	IgG

Applications

The **Abpromise guarantee** Our **Abpromise guarantee** covers the use of ab16146 in the following tested applications.

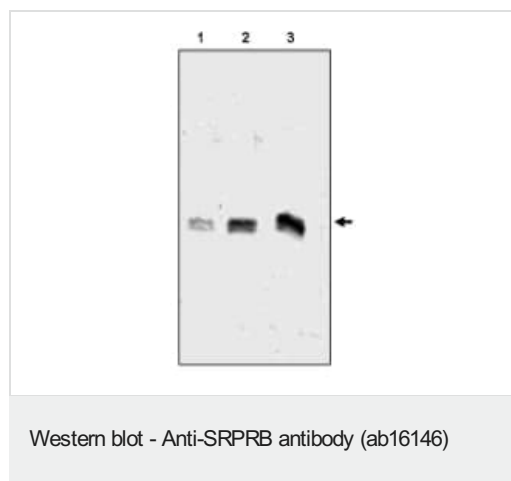
The application notes include recommended starting dilutions; optimal dilutions/concentrations should be determined by the end user.

Application	Abreviews	Notes
WB		Use a concentration of 1 - 5 µg/ml. Detects a band of approximately 30 kDa.

Target

Function	Component of the SRP (signal recognition particle) receptor. Ensures, in conjunction with the signal recognition particle, the correct targeting of the nascent secretory proteins to the endoplasmic reticulum membrane system. Has GTPase activity. May mediate the membrane association of SRPR.
Sequence similarities	Belongs to the SRP receptor beta subunit family.
Cellular localization	Endoplasmic reticulum membrane.

Images



ab16146 detecting SRPRB from canine microsomal protein by western blot

Lane 1: 3ng of canine microsomal protein

Lane 2: 6ng of canine microsomal protein

Lane 3: 12ng of canine microsomal protein

ab16146 detecting SRPRB from canine microsomal protein by western blot Lane 1: 3ng of canine microsomal protein Lane 2: 6ng of canine microsomal protein Lane 3: 12ng of canine microsomal protein

Please note: All products are "FOR RESEARCH USE ONLY. NOT FOR USE IN DIAGNOSTIC PROCEDURES"

Our Abpromise to you: Quality guaranteed and expert technical support

- Replacement or refund for products not performing as stated on the datasheet
- Valid for 12 months from date of delivery
- Response to your inquiry within 24 hours
- We provide support in Chinese, English, French, German, Japanese and Spanish
- Extensive multi-media technical resources to help you
- We investigate all quality concerns to ensure our products perform to the highest standards

If the product does not perform as described on this datasheet, we will offer a refund or replacement. For full details of the Abpromise, please visit <https://www.abcam.com/abpromise> or contact our technical team.

Terms and conditions

- Guarantee only valid for products bought direct from Abcam or one of our authorized distributors