

## Product datasheet

# Anti-SRSF3 antibody ab125124

★★★★★ [3 Abreviews](#) [4 References](#) [4 Images](#)

### Overview

---

<b>Product name</b>	Anti-SRSF3 antibody
<b>Description</b>	Rabbit polyclonal to SRSF3
<b>Host species</b>	Rabbit
<b>Tested applications</b>	<b>Suitable for:</b> WB, IHC-P, ICC/IF
<b>Species reactivity</b>	<b>Reacts with:</b> Human
<b>Immunogen</b>	Synthetic peptide corresponding to Human SRSF3 (C terminal).
<b>General notes</b>	<p>The Life Science industry has been in the grips of a reproducibility crisis for a number of years. Abcam is leading the way in addressing this with our range of recombinant monoclonal antibodies and knockout edited cell lines for gold-standard validation. Please check that this product meets your needs before purchasing.</p> <p>If you have any questions, special requirements or concerns, please send us an inquiry and/or contact our Support team ahead of purchase. Recommended alternatives for this product can be found below, along with publications, customer reviews and Q&amp;As</p>

### Properties

---

<b>Form</b>	Liquid
<b>Storage instructions</b>	Shipped at 4°C. Store at -20°C. Stable for 12 months at -20°C.
<b>Storage buffer</b>	pH: 7.40 Preservative: 0.02% Sodium azide Constituents: 49% PBS, 50% Glycerol (glycerin, glycerine), 0.88% Sodium chloride
<b>Purity</b>	PBS (without Mg <sup>2+</sup> , Ca <sup>2+</sup> ) Protein A purified
<b>Clonality</b>	Polyclonal
<b>Isotype</b>	IgG

### Applications

---

**The Abpromise guarantee** Our **Abpromise guarantee** covers the use of ab125124 in the following tested applications.

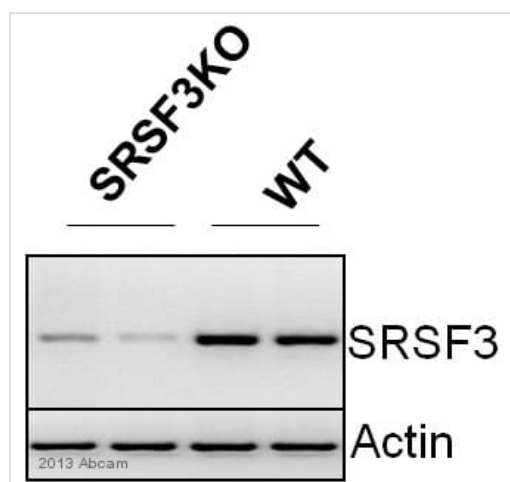
The application notes include recommended starting dilutions; optimal dilutions/concentrations should be determined by the end user.

Application	Abreviews	Notes
WB	★★★★★ (1)	1/500 - 1/1000. Predicted molecular weight: 19 kDa.
IHC-P	★★★★★ (2)	Use a concentration of 5 µg/ml.
ICC/IF		1/100 - 1/500.

## Target

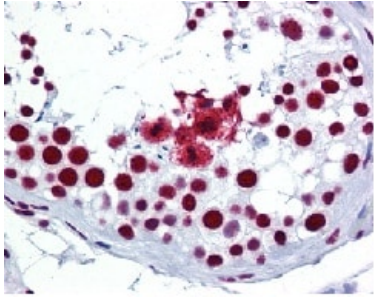
<b>Function</b>	May be involved in RNA processing in relation with cellular proliferation and/or maturation.
<b>Sequence similarities</b>	Belongs to the splicing factor SR family. Contains 1 RRM (RNA recognition motif) domain.
<b>Post-translational modifications</b>	Extensively phosphorylated on serine residues in the RS domain.
<b>Cellular localization</b>	Nucleus.

## Images



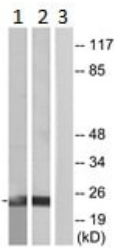
Western blot - Anti-SRSF3 antibody (ab125124)

This image is courtesy of Suypriya Sen



Immunohistochemistry (Formalin/PFA-fixed paraffin-embedded sections) - Anti-SRSF3 antibody (ab125124)

ab125124, at 5ug/ml, staining SRSF3 in formalin-fixed, paraffin-embedded Human testis tissue by Immunohistochemistry.



Western blot - Anti-SRSF3 antibody (ab125124)

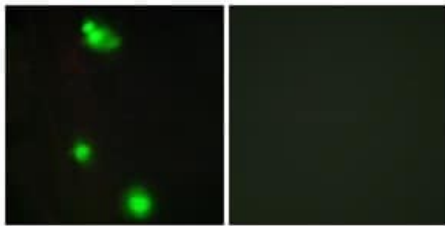
**All lanes :** Anti-SRSF3 antibody (ab125124) at 1/500 dilution

**Lane 1 :** HeLa cell extract

**Lane 2 :** Jurkat cell extract

**Lane 3 :** Jurkat cell extract with synthesized peptide

**Predicted band size:** 19 kDa



Immunocytochemistry/ Immunofluorescence - Anti-SRSF3 antibody (ab125124)

ab125124 at 1/100 dilution staining SRSF3 in MCF7 cells by Immunofluorescence. The image on the right is treated with the synthesized peptide.

**Please note:** All products are "FOR RESEARCH USE ONLY. NOT FOR USE IN DIAGNOSTIC PROCEDURES"

### Our Abpromise to you: Quality guaranteed and expert technical support

- Replacement or refund for products not performing as stated on the datasheet
- Valid for 12 months from date of delivery
- Response to your inquiry within 24 hours
- We provide support in Chinese, English, French, German, Japanese and Spanish
- Extensive multi-media technical resources to help you
- We investigate all quality concerns to ensure our products perform to the highest standards

If the product does not perform as described on this datasheet, we will offer a refund or replacement. For full details of the Abpromise,

please visit <https://www.abcam.com/abpromise> or contact our technical team.

## **Terms and conditions**

---

- Guarantee only valid for products bought direct from Abcam or one of our authorized distributors