

Product datasheet

Anti-SRSF3 antibody [EPR16976] ab198291

Recombinant RabMAb

★★★★★ **5 Abreviews** **15 References** [8 Images](#)

Overview

Product name	Anti-SRSF3 antibody [EPR16976]
Description	Rabbit monoclonal [EPR16976] to SRSF3
Host species	Rabbit
Tested applications	Suitable for: WB, IHC-P, ICC/IF, Flow Cyt (Intra)
Species reactivity	Reacts with: Mouse, Rat, Human
Immunogen	Synthetic peptide. This information is proprietary to Abcam and/or its suppliers.
Positive control	WB: Jurkat, HepG2, C6, RAW 264.7, PC-12, NIH/3T3 and K562 whole cell lysates. Mouse and Rat brain lysates. IHC-P: Human cervix carcinoma and Human cerebral cortex tissue. Mouse liver tissue. ICC/IF: HeLa, and PC-12 cells. Flow Cyt (intra): Jurkat cells.
General notes	<p>This product is a recombinant monoclonal antibody, which offers several advantages including:</p> <ul style="list-style-type: none"> - High batch-to-batch consistency and reproducibility - Improved sensitivity and specificity - Long-term security of supply - Animal-free production <p>For more information see here.</p> <p>Our RabMAb[®] technology is a patented hybridoma-based technology for making rabbit monoclonal antibodies. For details on our patents, please refer to RabMAb[®] patents.</p>

Properties

Form	Liquid
Storage instructions	Shipped at 4°C. Store at +4°C short term (1-2 weeks). Upon delivery aliquot. Store at -20°C long term. Avoid freeze / thaw cycle.
Storage buffer	<p>pH: 7.2</p> <p>Preservative: 0.01% Sodium azide</p> <p>Constituents: 59% PBS, 40% Glycerol (glycerin, glycerine), 0.05% BSA</p>
Purity	Protein A purified
Clonality	Monoclonal
Clone number	EPR16976

Isotype

IgG

Applications

The Abpromise guarantee

Our **Abpromise guarantee** covers the use of ab198291 in the following tested applications.

The application notes include recommended starting dilutions; optimal dilutions/concentrations should be determined by the end user.

Application	Abreviews	Notes
WB	★★★★★ (2)	1/1000. Detects a band of approximately 19 kDa (predicted molecular weight: 19 kDa).
IHC-P		1/250. Perform heat mediated antigen retrieval with Tris/EDTA buffer pH 9.0 before commencing with IHC staining protocol.
ICC/IF	★★★★★ (2)	1/500.
Flow Cyt (Intra)		1/250. ab172730 - Rabbit monoclonal IgG, is suitable for use as an isotype control with this antibody.

Target

Function

May be involved in RNA processing in relation with cellular proliferation and/or maturation.

Sequence similarities

Belongs to the splicing factor SR family.

Contains 1 RRM (RNA recognition motif) domain.

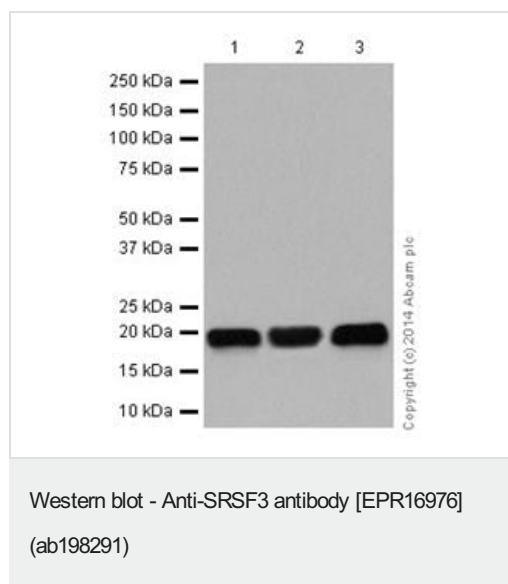
Post-translational modifications

Extensively phosphorylated on serine residues in the RS domain.

Cellular localization

Nucleus.

Images



All lanes : Anti-SRSF3 antibody [EPR16976] (ab198291) at 1/5000 dilution

Lane 1 : Jurkat (Human T cell leukemia cells from peripheral blood) whole cell lysate

Lane 2 : HepG2 (Human liver hepatocellular carcinoma) whole cell lysate

Lane 3 : K562 (Human chronic myelogenous leukemia cells from bone marrow) whole cell lysate

Lysates/proteins at 20 µg per lane.

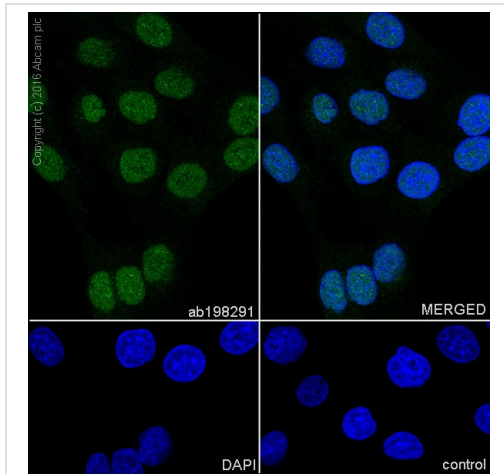
Secondary

All lanes : Goat Anti-Rabbit IgG, (H+L), Peroxidase conjugated at 1/1000 dilution

Predicted band size: 19 kDa

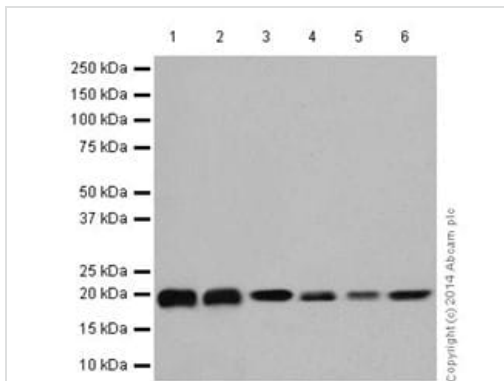
Observed band size: 19 kDa

Blocking/dilution buffer: 5% NFDm/TBST.



Immunocytochemistry/ Immunofluorescence - Anti-SRSF3 antibody [EPR16976] (ab198291)

Immunocytochemistry/Immunofluorescence analysis of PC-12 (Rat adrenal gland pheochromocytoma cell line) labelling SRSF3 with purified ab198291 at 1/500. Cells were fixed with 4% PFA and permeabilized with 0.1% triton X-100. **ab150077** Goat anti rabbit IgG (Alexa Fluor® 488) at 1/1000 was used as the secondary antibody. Nuclei were counterstained with DAPI. PBS was used instead of the primary antibody as the negative control.



Western blot - Anti-SRSF3 antibody [EPR16976] (ab198291)

All lanes : Anti-SRSF3 antibody [EPR16976] (ab198291) at 1/1000 dilution

Lane 1 : Mouse brain lysate

Lane 2 : Rat brain lysate

Lane 3 : C6 (Rat glial tumor) whole cell lysate

Lane 4 : RAW 264.7(Mouse macrophage cells transformed with Abelson murine leukemia virus) whole cell lysate

Lane 5 : PC-12 (Rat adrenal gland pheochromocytoma) whole cell lysate

Lane 6 : NIH/3T3 (Mouse embryo fibroblast cells) whole cell lysate

Lysates/proteins at 10 µg per lane.

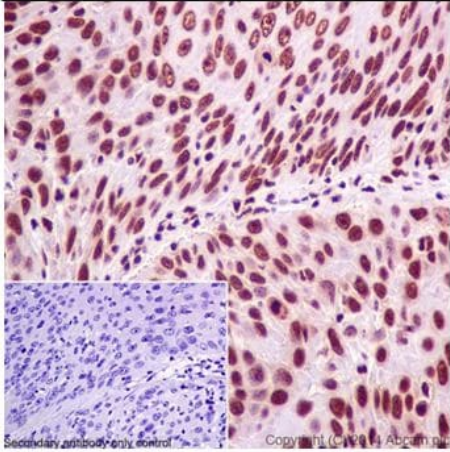
Secondary

All lanes : Goat Anti-Rabbit IgG, (H+L), Peroxidase conjugated at 1/1000 dilution

Predicted band size: 19 kDa

Observed band size: 19 kDa

Blocking/dilution buffer: 5% NFDm/TBST.

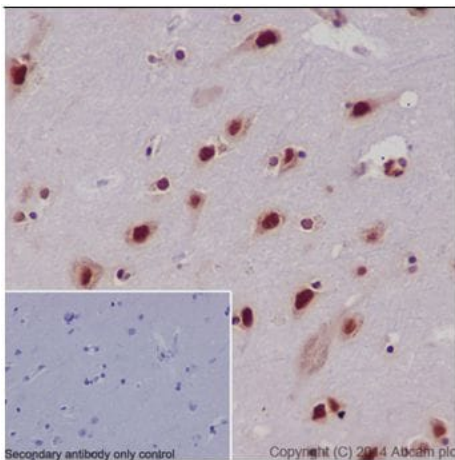


Immunohistochemistry (Formalin/PFA-fixed paraffin-embedded sections) - Anti-SRSF3 antibody [EPR16976] (ab198291)

Immunohistochemical analysis of paraffin-embedded Human cervix carcinoma tissue labeling SRSF3 with ab198291 at 1/500 dilution followed by Goat Anti-Rabbit IgG H&L (HRP) ([ab97051](#)) at 1/500 dilution. Nuclear staining on Human cervix carcinoma tissue is observed. Counter stained with Hematoxylin.

Negative control: Used PBS instead of primary ab.

Perform heat mediated antigen retrieval with Tris/EDTA buffer pH 9.0 before commencing with IHC staining protocol.

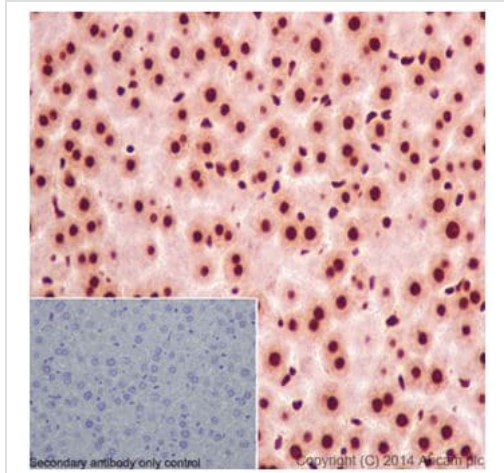


Immunohistochemistry (Formalin/PFA-fixed paraffin-embedded sections) - Anti-SRSF3 antibody [EPR16976] (ab198291)

Immunohistochemical analysis of paraffin-embedded Human cerebral cortex tissue labeling SRSF3 with ab198291 at 1/500 dilution followed by Goat Anti-Rabbit IgG H&L (HRP) ([ab97051](#)) at 1/500 dilution. Nuclear and weakly cytoplasm staining on Human cerebral cortex tissue is observed. Counter stained with Hematoxylin.

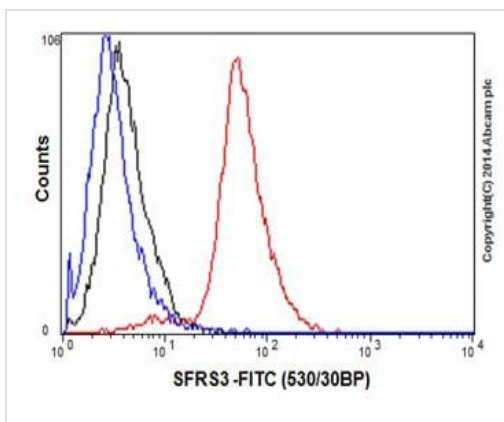
Negative control: Used PBS instead of primary ab.

Perform heat mediated antigen retrieval with Tris/EDTA buffer pH 9.0 before commencing with IHC staining protocol.



Immunohistochemistry (Formalin/PFA-fixed paraffin-embedded sections) - Anti-SRSF3 antibody [EPR16976] (ab198291)





Immunohistochemical analysis of paraffin-embedded Mouse liver tissue labeling SRSF3 with ab198291 at 1/500 dilution followed by Goat Anti-Rabbit IgG H&L (HRP) (**ab97051**) at 1/500 dilution. Nuclear and weakly cytoplasm staining on mouse liver tissue is observed. Counter stained with Hematoxylin. Negative control: Used PBS instead of primary ab. Perform heat mediated antigen retrieval with Tris/EDTA buffer pH 9.0 before commencing with IHC staining protocol.



Flow Cytometry (Intracellular) - Anti-SRSF3 antibody [EPR16976] (ab198291)

Intracellular flow cytometric analysis of 2% paraformaldehyde-fixed Jurkat (Human T Cell Leukemia cells from peripheral blood) labeling SRSF3 with ab198291 at 1/440 dilution (red) compared with a Rabbit monoclonal IgG isotype control (black) and an unlabelled control (cells without incubation with primary antibody and secondary antibody; blue). Goat anti rabbit IgG (FITC) at 1/150 dilution was used as the secondary antibody.

Why choose a recombinant antibody?

 <p>Research with confidence Consistent and reproducible results</p>	 <p>Long-term and scalable supply Recombinant technology</p>
 <p>Success from the first experiment Confirmed specificity</p>	 <p>Ethical standards compliant Animal-free production</p>

Anti-SRSF3 antibody [EPR16976] (ab198291)

Please note: All products are "FOR RESEARCH USE ONLY. NOT FOR USE IN DIAGNOSTIC PROCEDURES"

Our Abpromise to you: Quality guaranteed and expert technical support

- Replacement or refund for products not performing as stated on the datasheet
- Valid for 12 months from date of delivery
- Response to your inquiry within 24 hours
- We provide support in Chinese, English, French, German, Japanese and Spanish
- Extensive multi-media technical resources to help you
- We investigate all quality concerns to ensure our products perform to the highest standards

If the product does not perform as described on this datasheet, we will offer a refund or replacement. For full details of the Abpromise, please visit <https://www.abcam.com/abpromise> or contact our technical team.

Terms and conditions

- Guarantee only valid for products bought direct from Abcam or one of our authorized distributors