



# Anti-SSR3 antibody ab121458

[1 References](#) [8 Images](#)

### Overview

<b>Product name</b>	Anti-SSR3 antibody
<b>Description</b>	Rabbit polyclonal to SSR3
<b>Host species</b>	Rabbit
<b>Tested applications</b>	<b>Suitable for:</b> WB, IHC-P
<b>Species reactivity</b>	<b>Reacts with:</b> Mouse, Rat, Human
<b>Immunogen</b>	antigen sequence, corresponding to amino acids 83-133 (VLKHKVAQKR EDAVSKEVTR KLSEADNRKM SRKEKDERIL WKKNEVADYE A) of Human SSR3.  <a href="#">Run BLAST with ExPASy</a>  <a href="#">Run BLAST with NCBI</a>
<b>Positive control</b>	IHC-P: Human colon and cerebral cortex tissues. Mouse brain and choroid plexus tissues. WB: RPMI-8226, NIH/3T3, and NBT-II cell lysates, Human cerebral cortex and mouse cerebellum tissue lysates.
<b>General notes</b>	<p>The Life Science industry has been in the grips of a reproducibility crisis for a number of years. Abcam is leading the way in addressing this with our range of recombinant monoclonal antibodies and knockout edited cell lines for gold-standard validation. Please check that this product meets your needs before purchasing.</p> <p>If you have any questions, special requirements or concerns, please send us an inquiry and/or contact our Support team ahead of purchase. Recommended alternatives for this product can be found below, along with publications, customer reviews and Q&amp;As</p>

### Properties

<b>Form</b>	Liquid
<b>Storage instructions</b>	Shipped at 4°C. Upon delivery aliquot and store at -20°C. Avoid repeated freeze / thaw cycles.
<b>Storage buffer</b>	pH: 7.20 Preservative: 0.02% Sodium azide Constituents: 59% PBS, 40% Glycerol (glycerin, glycerine)
<b>Purity</b>	Immunogen affinity purified
<b>Clonality</b>	Polyclonal
<b>Isotype</b>	IgG

## Applications

### The Abpromise guarantee

Our **Abpromise guarantee** covers the use of ab121458 in the following tested applications.

The application notes include recommended starting dilutions; optimal dilutions/concentrations should be determined by the end user.

Application	Abreviews	Notes
WB		Use a concentration of 0.04 - 0.4 µg/ml.
IHC-P		1/200 - 1/500. Perform heat mediated antigen retrieval with citrate buffer pH 6 before commencing with IHC staining protocol.

## Target

### Function

TRAP proteins are part of a complex whose function is to bind calcium to the ER membrane and thereby regulate the retention of ER resident proteins.

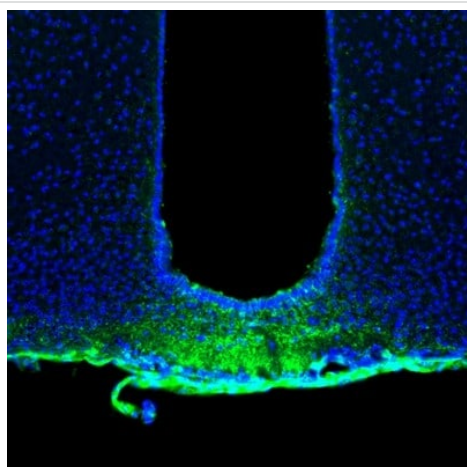
### Sequence similarities

Belongs to the TRAP-gamma family.

### Cellular localization

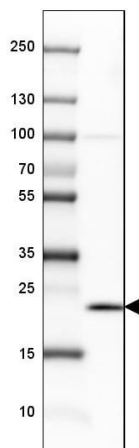
Endoplasmic reticulum membrane.

## Images



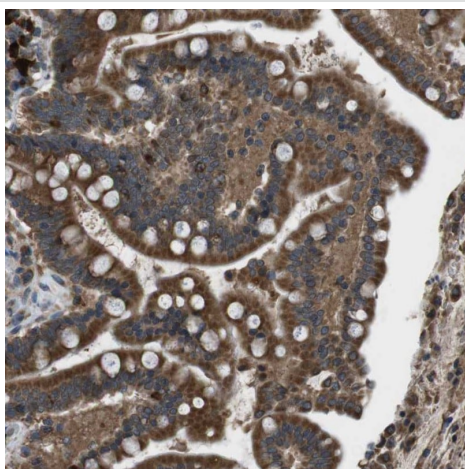
Immunohistochemistry (Formalin/PFA-fixed paraffin-embedded sections) analysis of mouse brain tissue labelling SSR3 with ab121458 at 1/200 dilution. Heat mediated antigen retrieval performed with citrate buffer pH 6 before commencing with IHC staining protocol.

Immunohistochemistry (Formalin/PFA-fixed paraffin-embedded sections) - Anti-SSR3 antibody (ab121458)



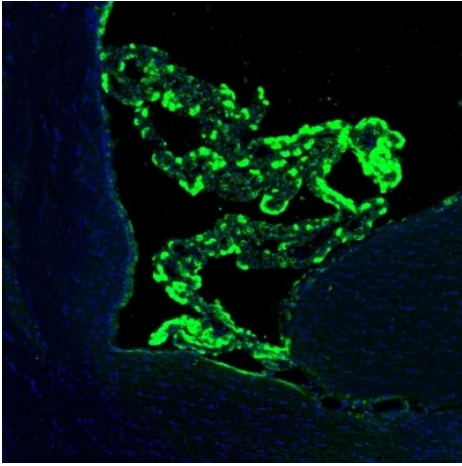
Western blot - Anti-SSR3 antibody (ab121458)

Anti-SSR3 antibody (ab121458) at 0.4 µg/ml + Human cerebral cortex tissue lysate



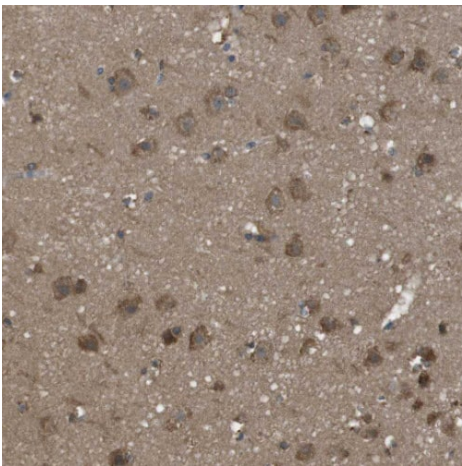
Immunohistochemistry (Formalin/PFA-fixed paraffin-embedded sections) - Anti-SSR3 antibody (ab121458)

Immunohistochemistry (Formalin/PFA-fixed paraffin-embedded sections) analysis of human colon tissue labelling SSR3 with ab121458 at 1/200 dilution. Heat mediated antigen retrieval performed with citrate buffer pH 6 before commencing with IHC staining protocol.



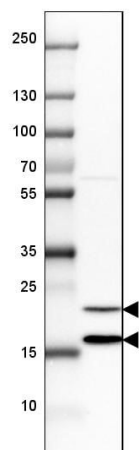
Immunohistochemistry (Formalin/PFA-fixed paraffin-embedded sections) - Anti-SSR3 antibody (ab121458)

Immunohistochemistry (Formalin/PFA-fixed paraffin-embedded sections) analysis of mouse choroid plexus tissue labelling SSR3 with ab121458 at 1/200 dilution. Heat mediated antigen retrieval performed with citrate buffer pH 6 before commencing with IHC staining protocol.



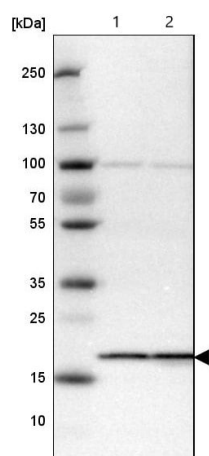
Immunohistochemistry (Formalin/PFA-fixed paraffin-embedded sections) - Anti-SSR3 antibody (ab121458)

Immunohistochemistry (Formalin/PFA-fixed paraffin-embedded sections) analysis of human cerebral cortex tissue labelling SSR3 with ab121458 at 1/200 dilution. Heat mediated antigen retrieval performed with citrate buffer pH 6 before commencing with IHC staining protocol.



Anti-SSR3 antibody (ab121458) at 0.4 µg/ml + Mouse cerebellum tissue lysate

Western blot - Anti-SSR3 antibody (ab121458)

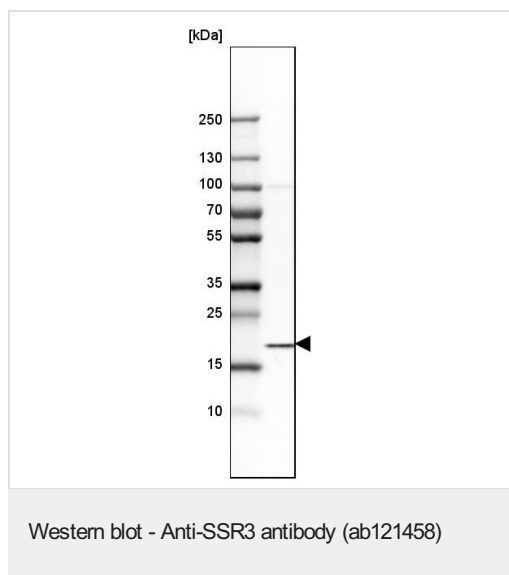


**All lanes :** Anti-SSR3 antibody (ab121458) at 0.4 µg/ml

**Lane 1 :** NIH/3T3 (mouse embryo fibroblast cell line) cell lysate

**Lane 2 :** NBT-II (rat urinary bladder tumor cell line) cell lysate

Western blot - Anti-SSR3 antibody (ab121458)



Anti-SSR3 antibody (ab121458) at 0.4 µg/ml + RPMI-8226 (human lymphoblast cell line) cell lysate

**Please note:** All products are "FOR RESEARCH USE ONLY. NOT FOR USE IN DIAGNOSTIC PROCEDURES"

### Our Abpromise to you: Quality guaranteed and expert technical support

---

- Replacement or refund for products not performing as stated on the datasheet
- Valid for 12 months from date of delivery
- Response to your inquiry within 24 hours
- We provide support in Chinese, English, French, German, Japanese and Spanish
- Extensive multi-media technical resources to help you
- We investigate all quality concerns to ensure our products perform to the highest standards

If the product does not perform as described on this datasheet, we will offer a refund or replacement. For full details of the Abpromise, please visit <https://www.abcam.com/abpromise> or contact our technical team.

### Terms and conditions

---

- Guarantee only valid for products bought direct from Abcam or one of our authorized distributors