


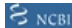


Product datasheet

Anti-ST7 antibody ab122459

4 Images

Overview

Product name	Anti-ST7 antibody
Description	Rabbit polyclonal to ST7
Host species	Rabbit
Tested applications	Suitable for: ICC/IF, WB, IHC-P
Species reactivity	Reacts with: Human
Immunogen	antigen sequence: PQARISAAHE ALEINEIRSR VEVPLIASST IWEIKLLPKC ATAY, corresponding to amino acids of Human ST7.  Run BLAST with   Run BLAST with 
Positive control	RT 4 and U 251 cell line lysates; Human heart muscle tissue.
General notes	<p>The Life Science industry has been in the grips of a reproducibility crisis for a number of years. Abcam is leading the way in addressing this with our range of recombinant monoclonal antibodies and knockout edited cell lines for gold-standard validation. Please check that this product meets your needs before purchasing.</p> <p>If you have any questions, special requirements or concerns, please send us an inquiry and/or contact our Support team ahead of purchase. Recommended alternatives for this product can be found below, along with publications, customer reviews and Q&As</p>

Properties

Form	Liquid
Storage instructions	Shipped at 4°C. Upon delivery aliquot and store at -20°C. Avoid freeze / thaw cycles.
Storage buffer	pH: 7.20 Preservative: 0.02% Sodium azide Constituents: 59% PBS, 40% Glycerol (glycerin, glycerine)
Purity	Immunogen affinity purified
Clonality	Polyclonal
Isotype	IgG

Applications

The Abpromise guarantee

Our **Abpromise guarantee** covers the use of ab122459 in the following tested applications.

The application notes include recommended starting dilutions; optimal dilutions/concentrations should be determined by the end user.

Application	Abreviews	Notes
ICC/IF		Use a concentration of 0.25 - 2 µg/ml.
WB		Use a concentration of 0.04 - 0.4 µg/ml.
IHC-P		1/500 - 1/1000. Perform heat mediated antigen retrieval with citrate buffer pH 6 before commencing with IHC staining protocol.

Target

Function

May act as a tumor suppressor.

Tissue specificity

Ubiquitously expressed, with highest levels in heart, liver and pancreas.

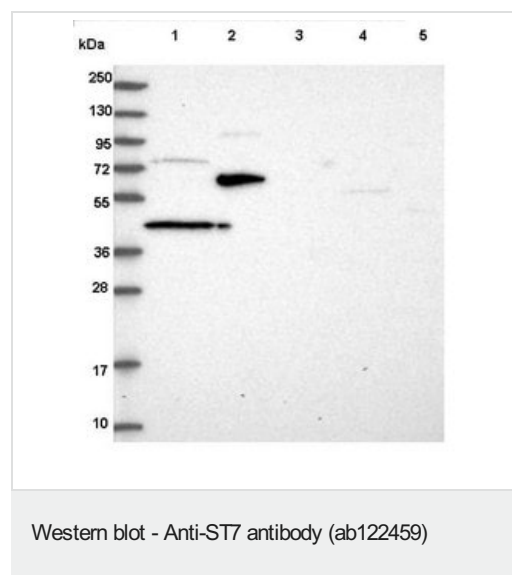
Sequence similarities

Belongs to the ST7 family.

Cellular localization

Membrane.

Images



All lanes : Anti-ST7 antibody (ab122459) at 1/250 dilution

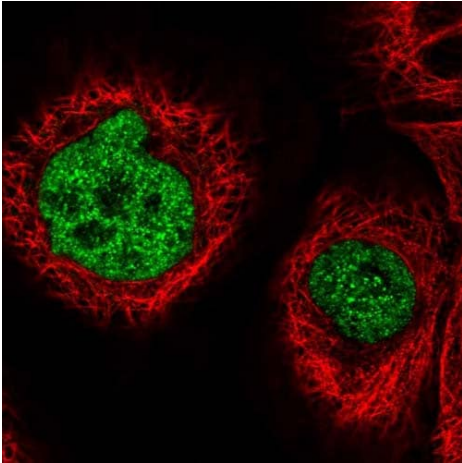
Lane 1 : RT 4 cell line lysate

Lane 2 : U 251 MG cell line lysate

Lane 3 : Human plasma

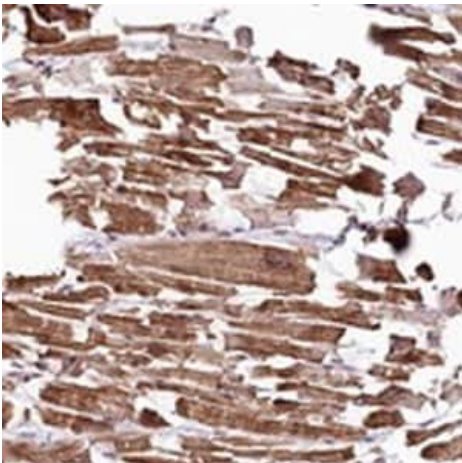
Lane 4 : Human liver tissue lysate

Lane 5 : Human tonsil tissue lysate



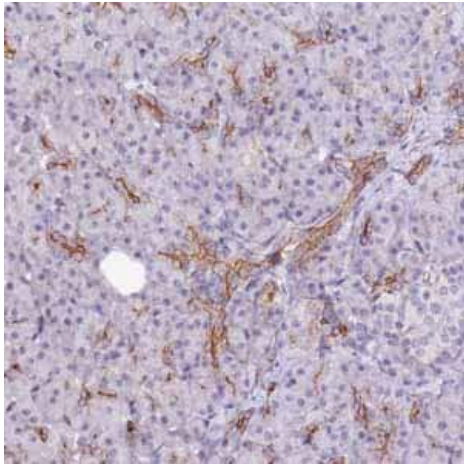
Immunocytochemistry/ Immunofluorescence - Anti-ST7 antibody (ab122459)

Immunofluorescent staining of Human cell line A-431 shows positivity in nucleus but not nucleoli. Recommended concentration of ab122459 1-4 µg/ml. Cells treated with PFA/Triton X-100.



Immunohistochemistry (Formalin/PFA-fixed paraffin-embedded sections) - Anti-ST7 antibody (ab122459)

ab122459, at 1/500, staining ST7 in paraffin embedded Human heart muscle tissue by Immunohistochemistry.



Immunohistochemical staining of Human pancreas shows moderate membranous positivity using ab122459

Immunohistochemistry (Formalin/PFA-fixed paraffin-embedded sections) - Anti-ST7 antibody (ab122459)

Please note: All products are "FOR RESEARCH USE ONLY. NOT FOR USE IN DIAGNOSTIC PROCEDURES"

Our Abpromise to you: Quality guaranteed and expert technical support

- Replacement or refund for products not performing as stated on the datasheet
- Valid for 12 months from date of delivery
- Response to your inquiry within 24 hours
- We provide support in Chinese, English, French, German, Japanese and Spanish
- Extensive multi-media technical resources to help you
- We investigate all quality concerns to ensure our products perform to the highest standards

If the product does not perform as described on this datasheet, we will offer a refund or replacement. For full details of the Abpromise, please visit <https://www.abcam.com/abpromise> or contact our technical team.

Terms and conditions

- Guarantee only valid for products bought direct from Abcam or one of our authorized distributors