

Anti-STAP-1 antibody ab103646

3 Images

Overview

Product name	Anti-STAP-1 antibody
Description	Rabbit polyclonal to STAP-1
Host species	Rabbit
Tested applications	Suitable for: WB
Species reactivity	Reacts with: Mouse, Human
Immunogen	<p>Recombinant full length protein within Human STAP-1 aa 1-300. The exact immunogen sequence used to generate this antibody is proprietary information. If additional detail on the immunogen is needed to determine the suitability of the antibody for your needs, please <u>contact</u> our Scientific Support team to discuss your requirements.</p> <p>Database link: <u>NP_036240.1</u></p>
Positive control	Human kidney and Mouse intestine tissue lysates, STAP-1 transfected 293T cell lysate
General notes	<p>The Life Science industry has been in the grips of a reproducibility crisis for a number of years. Abcam is leading the way in addressing this with our range of recombinant monoclonal antibodies and knockout edited cell lines for gold-standard validation. Please check that this product meets your needs before purchasing.</p> <p>If you have any questions, special requirements or concerns, please send us an inquiry and/or contact our Support team ahead of purchase. Recommended alternatives for this product can be found below, along with publications, customer reviews and Q&As</p>

Properties

Form	Liquid
Storage instructions	Shipped at 4°C. Upon delivery aliquot. Store at -20°C or -80°C. Avoid freeze / thaw cycle.
Storage buffer	<p>pH: 7.40</p> <p>Constituent: 100% PBS</p>
Purity	Protein A purified
Clonality	Polyclonal
Isotype	IgG

Applications

The Abpromise guarantee

Our **Abpromise guarantee** covers the use of ab103646 in the following tested applications.

The application notes include recommended starting dilutions; optimal dilutions/concentrations should be determined by the end user.

Application	Abreviews	Notes
WB		Use a concentration of 1 µg/ml. Predicted molecular weight: 34 kDa.

Target

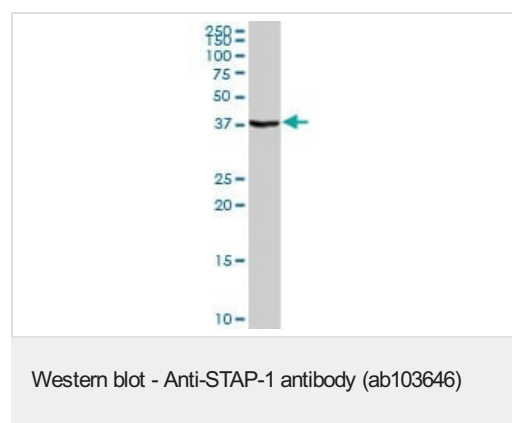
Function In BCR signaling, appears to function as a docking protein acting downstream of TEC and participates in a positive feedback loop by increasing the activity of TEC.

Sequence similarities Contains 1 PH domain.
Contains 1 SH2 domain.

Post-translational modifications Phosphorylated on tyrosine by TEC.

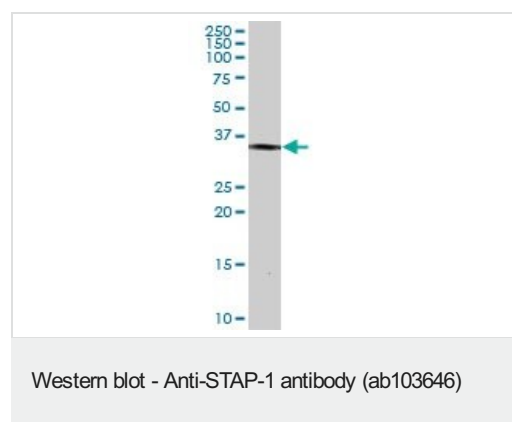
Cellular localization Cytoplasm.

Images



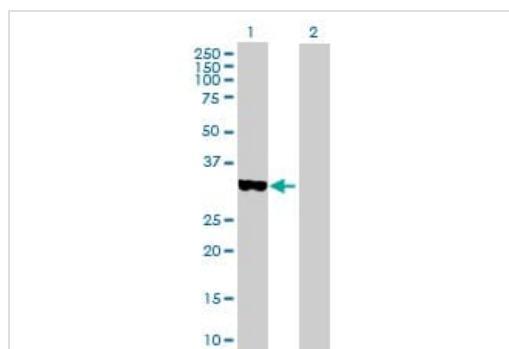
Anti-STAP-1 antibody (ab103646) at 1 µg/ml + Human kidney tissue lysate at 50 µg

Predicted band size: 34 kDa



Anti-STAP-1 antibody (ab103646) at 1 µg/ml + Mouse intestine tissue lysate at 50 µg

Predicted band size: 34 kDa



Western blot - Anti-STAP-1 antibody (ab103646)

All lanes : Anti-STAP-1 antibody (ab103646) at 1 µg/ml

Lane 1 : STAP-1 transfected 293T cell lysate

Lane 2 : Non-transfected 293T cell lysate

Lysates/proteins at 25 µg per lane.

Predicted band size: 34 kDa

Please note: All products are "FOR RESEARCH USE ONLY. NOT FOR USE IN DIAGNOSTIC PROCEDURES"

Our Abpromise to you: Quality guaranteed and expert technical support

- Replacement or refund for products not performing as stated on the datasheet
- Valid for 12 months from date of delivery
- Response to your inquiry within 24 hours
- We provide support in Chinese, English, French, German, Japanese and Spanish
- Extensive multi-media technical resources to help you
- We investigate all quality concerns to ensure our products perform to the highest standards

If the product does not perform as described on this datasheet, we will offer a refund or replacement. For full details of the Abpromise, please visit <https://www.abcam.com/abpromise> or contact our technical team.

Terms and conditions

- Guarantee only valid for products bought direct from Abcam or one of our authorized distributors