

## Product datasheet

# Anti-Staphylococcus aureus antibody ab20920

★★★★☆ [8 Abreviews](#) [42 References](#) [2 Images](#)

### Overview

---

<b>Product name</b>	Anti-Staphylococcus aureus antibody
<b>Description</b>	Rabbit polyclonal to Staphylococcus aureus
<b>Host species</b>	Rabbit
<b>Specificity</b>	Soluble and structural antigens of the whole bacterium. Antiserum is not absorbed for related microorganisms.
<b>Tested applications</b>	<b>Suitable for:</b> ICC/IF, IHC-Fr
<b>Species reactivity</b>	<b>Reacts with:</b> Staphylococcus aureus
<b>Immunogen</b>	Tissue, cells or virus corresponding to Staphylococcus aureus. Staphylococcus aureus strain ATCC 27660 (mixture of intact organisms and lysed cells).
<b>General notes</b>	<p>The Life Science industry has been in the grips of a reproducibility crisis for a number of years. Abcam is leading the way in addressing this with our range of recombinant monoclonal antibodies and knockout edited cell lines for gold-standard validation. Please check that this product meets your needs before purchasing.</p> <p>If you have any questions, special requirements or concerns, please send us an inquiry and/or contact our Support team ahead of purchase. Recommended alternatives for this product can be found below, along with publications, customer reviews and Q&amp;As</p>

### Properties

---

<b>Form</b>	Liquid
<b>Storage instructions</b>	Shipped at 4°C. Store at +4°C short term (1-2 weeks). Upon delivery aliquot. Store at -20°C or -80°C. Avoid freeze / thaw cycle.
<b>Storage buffer</b>	Preservative: 0.1% Sodium azide Constituent: 0.0268% PBS
<b>Purity</b>	Protein A purified
<b>Clonality</b>	Polyclonal
<b>Isotype</b>	IgG

### Applications

---

## The Abpromise guarantee

Our **Abpromise guarantee** covers the use of ab20920 in the following tested applications.

The application notes include recommended starting dilutions; optimal dilutions/concentrations should be determined by the end user.

Application	Abreviews	Notes
ICC/IF	★★★★★ (2)	Use at an assay dependent concentration.
IHC-Fr	★★★★★ (3)	Use at an assay dependent concentration. Use with acetone fixed tissues.

## Target

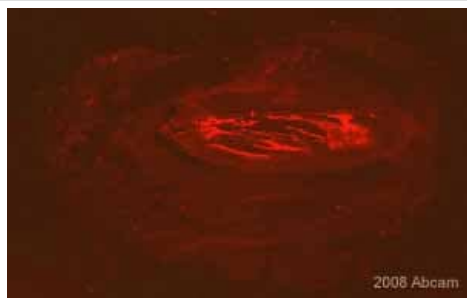
### Relevance

S.aureus binds IgG molecules by their Fc region. In serum, the bacteria will bind IgG molecules in the wrong orientation on their surface, which hinders opsonization and phagocytosis. Mutants of S. aureus lacking protein A are more efficiently phagocytosed in vitro, and mutants in infection models have diminished virulence. Due to its affinity for the Fc region of many mammalian immunoglobulins, protein A is considered a universal reagent in biochemistry and immunology.

### Cellular localization

Secreted; cell wall.

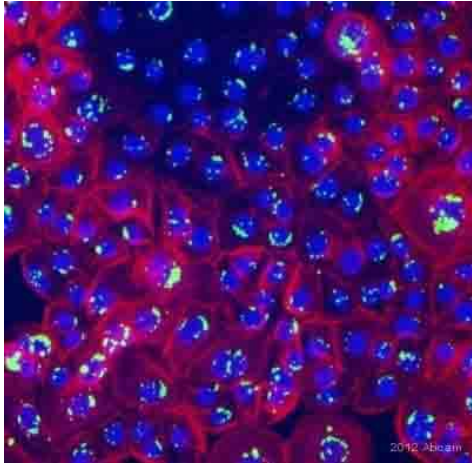
## Images



Immunohistochemistry (Frozen sections) - Anti-Staphylococcus aureus antibody (ab20920)

This image is courtesy of an Abreview submitted by Dr Dagmar Salber

ab20920 staining an abscess in rat calf tissue prepared as a 20 µm cryoslice. Tissue was fixed in paraformaldehyde, permeabilised with 0,5% Triton X100 in PBS, and blocked with 10% serum plus 1% BSA for 1 hour at room temperature. The primary antibody was diluted 1/500 with PBS plus 3-5% Serum, 0,5% Triton X100 and incubated for 24 hours at 20°C. An Alexa Fluor® 568 goat anti-rabbit was used as the secondary



ab20920 staining *Staphylococcus aureus* in human keratinocytes by Immunocytochemistry/ Immunofluorescence.

Cells were fixed in methanol, permeabilized using 0.1% saponin/ PBS, blocked with 4% BSA for 30 minutes at 25°C and then incubated with ab20920 at 10µg/ml for 14 hours at 4°C. The secondary used was an Alexa-Fluor 488 conjugated goat anti-rabbit polyclonal used at a 1/100 dilution.

Red: cadherin

Blue: DAPI

Green: anti-*Staphylococcus aureus* (ab20920)

Immunocytochemistry/ Immunofluorescence - Anti-*Staphylococcus aureus* antibody (ab20920)

Image courtesy of an anonymous Abreview.

**Please note:** All products are "FOR RESEARCH USE ONLY. NOT FOR USE IN DIAGNOSTIC PROCEDURES"

### Our Abpromise to you: Quality guaranteed and expert technical support

---

- Replacement or refund for products not performing as stated on the datasheet
- Valid for 12 months from date of delivery
- Response to your inquiry within 24 hours
- We provide support in Chinese, English, French, German, Japanese and Spanish
- Extensive multi-media technical resources to help you
- We investigate all quality concerns to ensure our products perform to the highest standards

If the product does not perform as described on this datasheet, we will offer a refund or replacement. For full details of the Abpromise, please visit <https://www.abcam.com/abpromise> or contact our technical team.

### Terms and conditions

---

- Guarantee only valid for products bought direct from Abcam or one of our authorized distributors