


Anti-STAT2 antibody ab124283

[2 References](#) [1 Image](#)

Overview

Product name	Anti-STAT2 antibody
Description	Rabbit polyclonal to STAT2
Host species	Rabbit
Tested applications	Suitable for: IP
Species reactivity	Reacts with: Human Predicted to work with: Chimpanzee, Gorilla, Orangutan 
Immunogen	Synthetic peptide corresponding to Human STAT2 aa 150-250. Database link: P52630
Positive control	IP: Jurkat whole cell lysate.
General notes	<p>The Life Science industry has been in the grips of a reproducibility crisis for a number of years. Abcam is leading the way in addressing this with our range of recombinant monoclonal antibodies and knockout edited cell lines for gold-standard validation. Please check that this product meets your needs before purchasing.</p> <p>If you have any questions, special requirements or concerns, please send us an inquiry and/or contact our Support team ahead of purchase. Recommended alternatives for this product can be found below, along with publications, customer reviews and Q&As</p>

Properties

Form	Liquid
Storage instructions	Shipped at 4°C. Upon delivery aliquot and store at -20°C. Avoid freeze / thaw cycles.
Storage buffer	pH: 7 Preservative: 0.09% Sodium azide Constituent: 99% Tris citrate/phosphate
Purity	pH 7 to 8 Immunogen affinity purified
Purification notes	ab124283 was affinity purified using an epitope specific to STAT2 immobilized on solid support.
Clonality	Polyclonal
Isotype	IgG

Applications

The Abpromise guarantee

Our **Abpromise guarantee** covers the use of ab124283 in the following tested applications.

The application notes include recommended starting dilutions; optimal dilutions/concentrations should be determined by the end user.

Application	Abreviews	Notes
IP		Use at 2-10 µg/mg of lysate.

Target

Function

Signal transducer and activator of transcription that mediates signaling by type I IFNs (IFN-alpha and IFN-beta). Following type I IFN binding to cell surface receptors, Jak kinases (TYK2 and JAK1) are activated, leading to tyrosine phosphorylation of STAT1 and STAT2. The phosphorylated STATs dimerize, associate with ISGF3G/IRF-9 to form a complex termed ISGF3 transcription factor, that enters the nucleus. ISGF3 binds to the IFN stimulated response element (ISRE) to activate the transcription of interferon stimulated genes, which drive the cell in an antiviral state.

Sequence similarities

Belongs to the transcription factor STAT family.
Contains 1 SH2 domain.

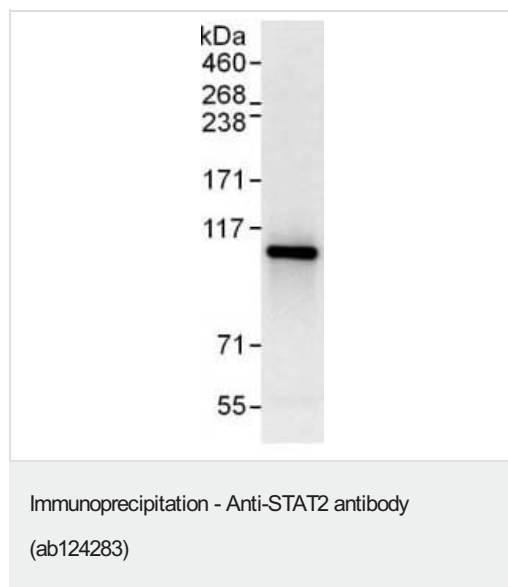
Post-translational modifications

Tyrosine phosphorylated in response to IFN-alpha.

Cellular localization

Cytoplasm. Nucleus. Translocated into the nucleus upon activation by IFN-alpha/beta.

Images



Detection of STAT2 by Western Blot of Immunoprecipitate.
anti-STAT2 antibody at 1 µg/ml staining STAT2 in Jurkat whole cell
lysate immunoprecipitated using **ab123283** at 6 µg/mg lysate (1
mg/IP; 20% of IP loaded/lane).
Detection: Chemiluminescence with exposure time of 3 seconds.

Please note: All products are "FOR RESEARCH USE ONLY. NOT FOR USE IN DIAGNOSTIC PROCEDURES"

Our Abpromise to you: Quality guaranteed and expert technical support

- Replacement or refund for products not performing as stated on the datasheet
- Valid for 12 months from date of delivery
- Response to your inquiry within 24 hours
- We provide support in Chinese, English, French, German, Japanese and Spanish
- Extensive multi-media technical resources to help you
- We investigate all quality concerns to ensure our products perform to the highest standards

If the product does not perform as described on this datasheet, we will offer a refund or replacement. For full details of the Abpromise, please visit <https://www.abcam.com/abpromise> or contact our technical team.

Terms and conditions

- Guarantee only valid for products bought direct from Abcam or one of our authorized distributors