



Product datasheet

Anti-STAT2 antibody ab233177

★ ★ ★ ★ ★ [1 Abreviews](#) [2 References](#) [8 Images](#)

Overview

Product name	Anti-STAT2 antibody
Description	Rabbit polyclonal to STAT2
Host species	Rabbit
Tested applications	Suitable for: WB, IHC-P
Species reactivity	Reacts with: Human, Pig
Immunogen	Recombinant fragment (His-T7-tag) corresponding to Human STAT2 aa 600-850. Two N-terminal tags. (Expressed in E.coli). Database link: P52630
	<div>  Run BLAST with  Run BLAST with </div>
Positive control	IHC-P: Human stomach, kidney, stomach cancer and liver tissues. WB: K562 and HeLa cell lysates; Pig liver lysate; Recombinant human STAT2 protein.
General notes	<p>The Life Science industry has been in the grips of a reproducibility crisis for a number of years. Abcam is leading the way in addressing this with our range of recombinant monoclonal antibodies and knockout edited cell lines for gold-standard validation. Please check that this product meets your needs before purchasing.</p> <p>If you have any questions, special requirements or concerns, please send us an inquiry and/or contact our Support team ahead of purchase. Recommended alternatives for this product can be found below, along with publications, customer reviews and Q&As</p>

Properties

Form	Liquid
Storage instructions	Shipped at 4°C. Store at +4°C short term (1-2 weeks). Upon delivery aliquot. Store at -20°C long term. Avoid freeze / thaw cycle.
Storage buffer	pH: 7.40 Preservative: 0.02% Sodium azide Constituents: 44.12% PBS, 55.77% Glycerol (glycerin, glycerine)
Purity	Immunogen affinity purified
Purification notes	ab233177 was purified by antigen-specific affinity chromatography followed by Protein A affinity chromatography.
Clonality	Polyclonal

Isotype

IgG

Applications

The Abpromise guarantee

Our **Abpromise guarantee** covers the use of ab233177 in the following tested applications.

The application notes include recommended starting dilutions; optimal dilutions/concentrations should be determined by the end user.

Application	Abreviews	Notes
WB		Use a concentration of 0.5 - 2 µg/ml. Predicted molecular weight: 97 kDa.
IHC-P	★ ★ ★ ★ ★ (1)	Use a concentration of 5 - 20 µg/ml.

Target

Function

Signal transducer and activator of transcription that mediates signaling by type I IFNs (IFN-alpha and IFN-beta). Following type I IFN binding to cell surface receptors, Jak kinases (TYK2 and JAK1) are activated, leading to tyrosine phosphorylation of STAT1 and STAT2. The phosphorylated STATs dimerize, associate with ISGF3G/IRF-9 to form a complex termed ISGF3 transcription factor, that enters the nucleus. ISGF3 binds to the IFN stimulated response element (ISRE) to activate the transcription of interferon stimulated genes, which drive the cell in an antiviral state.

Sequence similarities

Belongs to the transcription factor STAT family.
Contains 1 SH2 domain.

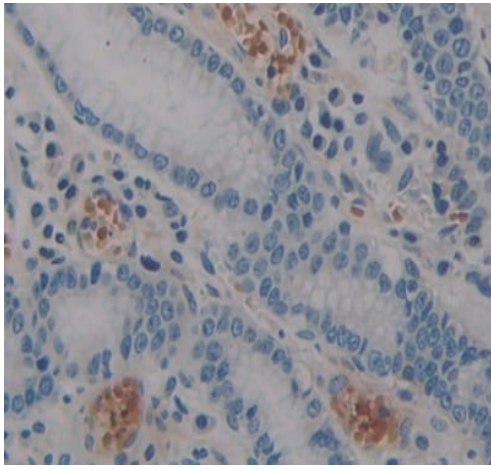
Post-translational modifications

Tyrosine phosphorylated in response to IFN-alpha.

Cellular localization

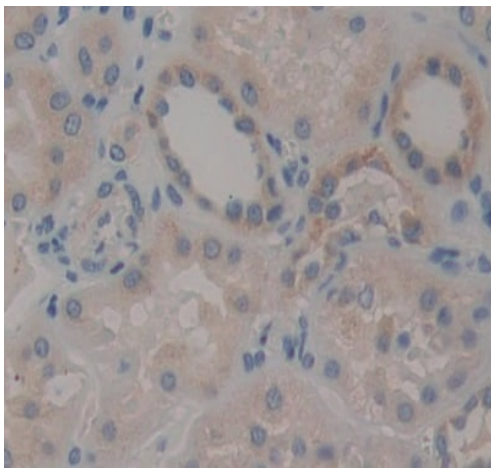
Cytoplasm. Nucleus. Translocated into the nucleus upon activation by IFN-alpha/beta.

Images



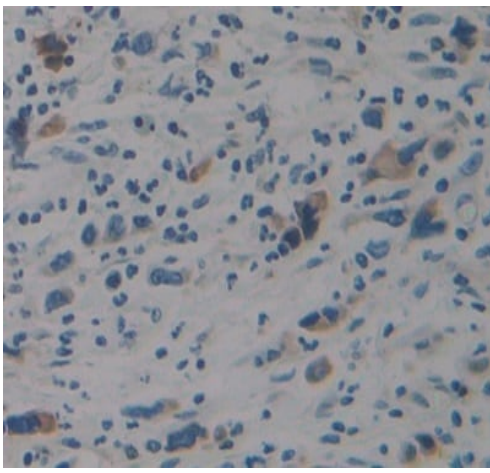
Immunohistochemistry (Formalin/PFA-fixed paraffin-embedded sections) - Anti-STAT2 antibody (ab233177)

Paraffin-embedded human stomach tissue stained for STAT2 using ab233177 at 20 µg/ml in immunohistochemical analysis. DAB staining.



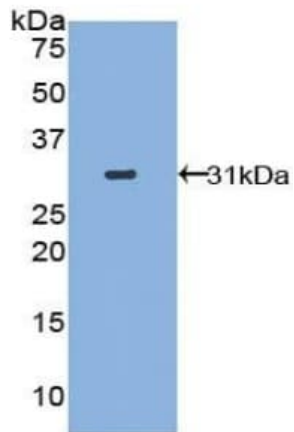
Immunohistochemistry (Formalin/PFA-fixed paraffin-embedded sections) - Anti-STAT2 antibody (ab233177)

Paraffin-embedded human kidney tissue stained for STAT2 using ab233177 at 20 µg/ml in immunohistochemical analysis. DAB staining.



Immunohistochemistry (Formalin/PFA-fixed paraffin-embedded sections) - Anti-STAT2 antibody (ab233177)

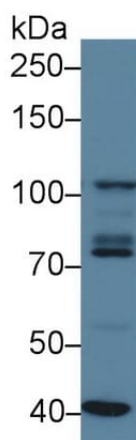
Paraffin-embedded human stomach cancer tissue stained for STAT2 using ab233177 at 20 µg/ml in immunohistochemical analysis. DAB staining.



Western blot - Anti-STAT2 antibody (ab233177)

Anti-STAT2 antibody (ab233177) at 2 µg/ml + Recombinant human STAT2 protein

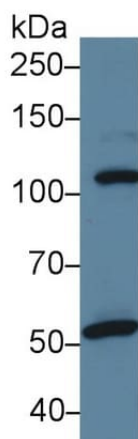
Predicted band size: 97 kDa



Western blot - Anti-STAT2 antibody (ab233177)

Anti-STAT2 antibody (ab233177) at 2 µg/ml + K562 (human chronic myelogenous leukemia cell line from bone marrow) cell lysate

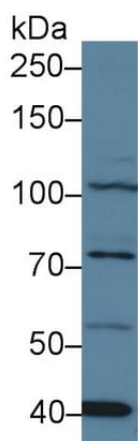
Predicted band size: 97 kDa



Western blot - Anti-STAT2 antibody (ab233177)

Anti-STAT2 antibody (ab233177) at 2 µg/ml + Pig liver tissue lysate

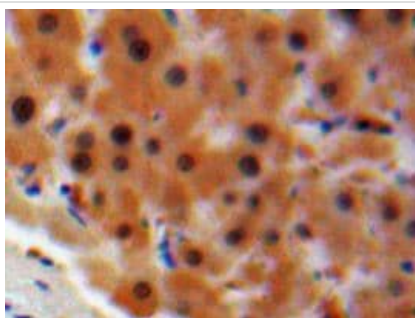
Predicted band size: 97 kDa



Western blot - Anti-STAT2 antibody (ab233177)

Anti-STAT2 antibody (ab233177) at 2 µg/ml + HeLa (human epithelial cell line from cervix adenocarcinoma) cell lysate

Predicted band size: 97 kDa



Immunohistochemistry (Formalin/PFA-fixed paraffin-embedded sections) - Anti-STAT2 antibody (ab233177)

Formalin-fixed, paraffin-embedded human liver tissue stained for STAT2 using ab233177 at 20 µg/ml in immunohistochemical analysis. DAB staining.

Please note: All products are "FOR RESEARCH USE ONLY. NOT FOR USE IN DIAGNOSTIC PROCEDURES"

Our Abpromise to you: Quality guaranteed and expert technical support

- Replacement or refund for products not performing as stated on the datasheet
- Valid for 12 months from date of delivery
- Response to your inquiry within 24 hours

- We provide support in Chinese, English, French, German, Japanese and Spanish
- Extensive multi-media technical resources to help you
- We investigate all quality concerns to ensure our products perform to the highest standards

If the product does not perform as described on this datasheet, we will offer a refund or replacement. For full details of the Abpromise, please visit <https://www.abcam.com/abpromise> or contact our technical team.

Terms and conditions

- Guarantee only valid for products bought direct from Abcam or one of our authorized distributors