

## Product datasheet

# Anti-STAT6 antibody ab88540

[2 References](#) [3 Images](#)

### Overview

---

<b>Product name</b>	Anti-STAT6 antibody
<b>Description</b>	Mouse polyclonal to STAT6
<b>Host species</b>	Mouse
<b>Tested applications</b>	<b>Suitable for:</b> WB, ICC/IF
<b>Species reactivity</b>	<b>Reacts with:</b> Human
<b>Immunogen</b>	Recombinant full length protein within Human STAT6. The exact immunogen sequence used to generate this antibody is proprietary information. If additional detail on the immunogen is needed to determine the suitability of the antibody for your needs, please <b>contact</b> our Scientific Support team to discuss your requirements.
<b>Positive control</b>	Human pancreas tissue lysate, STAT6 transfected 293T cell lysate and HeLa cells.
<b>General notes</b>	<p>The Life Science industry has been in the grips of a reproducibility crisis for a number of years. Abcam is leading the way in addressing this with our range of recombinant monoclonal antibodies and knockout edited cell lines for gold-standard validation. Please check that this product meets your needs before purchasing.</p> <p>If you have any questions, special requirements or concerns, please send us an inquiry and/or contact our Support team ahead of purchase. Recommended alternatives for this product can be found below, along with publications, customer reviews and Q&amp;As</p>

### Properties

---

<b>Form</b>	Liquid
<b>Storage instructions</b>	Shipped at 4°C. Upon delivery aliquot and store at -20°C or -80°C. Avoid repeated freeze / thaw cycles.
<b>Storage buffer</b>	pH: 7.40 Constituent: 100% PBS
<b>Purity</b>	Protein A purified
<b>Clonality</b>	Polyclonal
<b>Isotype</b>	IgG

### Applications

---

## The Abpromise guarantee

Our **Abpromise guarantee** covers the use of ab88540 in the following tested applications.

The application notes include recommended starting dilutions; optimal dilutions/concentrations should be determined by the end user.

Application	Abreviews	Notes
WB		Use a concentration of 1 µg/ml. Predicted molecular weight: 94 kDa.
ICC/IF		Use a concentration of 10 µg/ml.

## Target

### Function

Carries out a dual function: signal transduction and activation of transcription. Involved in interleukin-4 signalling.

### Sequence similarities

Belongs to the transcription factor STAT family.  
Contains 1 SH2 domain.

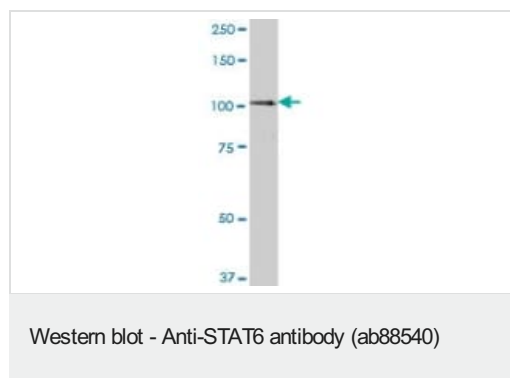
### Post-translational modifications

Tyrosine phosphorylated following stimulation by IL-4 and IL-3.

### Cellular localization

Cytoplasm. Nucleus. Translocated into the nucleus in response to phosphorylation.

## Images



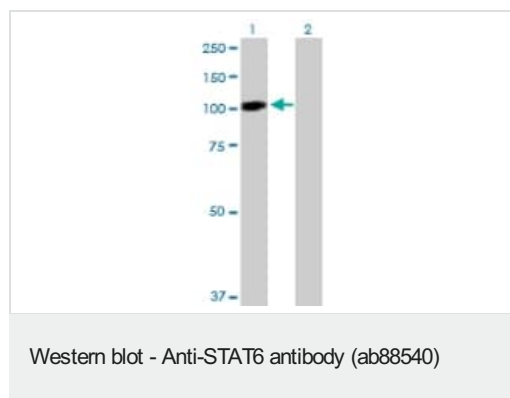
Anti-STAT6 antibody (ab88540) at 1 µg/ml + Human pancreas tissue lysate at 50 µg

### Secondary

Goat Anti-Mouse IgG (H&L)-HRP Conjugate secondary antibody at 1/2500 dilution

**Predicted band size:** 94 kDa

**Observed band size:** 100 kDa



**All lanes :** Anti-STAT6 antibody (ab88540) at 1 µg/ml

**Lane 1 :** STAT6 transfected 293T cell lysate

**Lane 2 :** Non-transfected 293T cell lysate

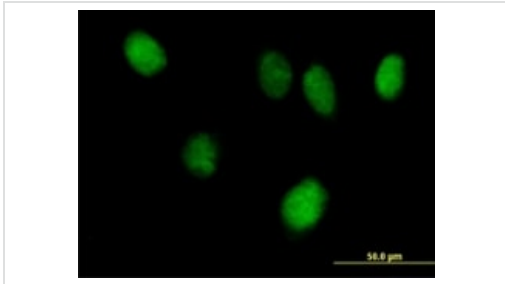
Lysates/proteins at 50 µg per lane.

### Secondary

**All lanes :** Goat Anti-Mouse IgG (H&L)-HRP Conjugate at 1/2500 dilution

**Predicted band size:** 94 kDa

**Observed band size:** 100 kDa



Immunofluorescence of ab88540 on HeLa cell with antibody concentration at 10 ug/ml

Immunocytochemistry/ Immunofluorescence - Anti-STAT6 antibody (ab88540)

**Please note:** All products are "FOR RESEARCH USE ONLY. NOT FOR USE IN DIAGNOSTIC PROCEDURES"

#### **Our Abpromise to you: Quality guaranteed and expert technical support**

---

- Replacement or refund for products not performing as stated on the datasheet
- Valid for 12 months from date of delivery
- Response to your inquiry within 24 hours
- We provide support in Chinese, English, French, German, Japanese and Spanish
- Extensive multi-media technical resources to help you
- We investigate all quality concerns to ensure our products perform to the highest standards

If the product does not perform as described on this datasheet, we will offer a refund or replacement. For full details of the Abpromise, please visit <https://www.abcam.com/abpromise> or contact our technical team.

#### **Terms and conditions**

---

- Guarantee only valid for products bought direct from Abcam or one of our authorized distributors