

## Product datasheet

### Anti-STAT6 (phospho Y641) antibody ab28829

★★★★★ [12 Abreviews](#) [34 References](#) [5 Images](#)

#### Overview

<b>Product name</b>	Anti-STAT6 (phospho Y641) antibody
<b>Description</b>	Rabbit polyclonal to STAT6 (phospho Y641)
<b>Host species</b>	Rabbit
<b>Tested applications</b>	<b>Suitable for:</b> IHC-P, WB
<b>Species reactivity</b>	<b>Reacts with:</b> Human
<b>Immunogen</b>	Synthetic peptide corresponding to Human STAT6 (phospho Y641). Synthesized phosphopeptide derived from human STAT6 around the phosphorylation site of Tyrosine 641. Database link: <a href="#">P42226</a>

#### General notes

The Life Science industry has been in the grips of a reproducibility crisis for a number of years. Abcam is leading the way in addressing this with our range of recombinant monoclonal antibodies and knockout edited cell lines for gold-standard validation. Please check that this product meets your needs before purchasing.

If you have any questions, special requirements or concerns, please send us an inquiry and/or contact our Support team ahead of purchase. Recommended alternatives for this product can be found below, along with publications, customer reviews and Q&As

#### Properties

<b>Form</b>	Liquid
<b>Storage instructions</b>	Shipped at 4°C. Store at +4°C short term (1-2 weeks). Upon delivery aliquot. Store at -20°C long term.
<b>Storage buffer</b>	pH: 7.40 Preservative: 0.02% Sodium azide Constituents: 50% Glycerol (glycerin, glycerine), 0.87% Sodium chloride
<b>Purity</b>	Immunogen affinity purified
<b>Clonality</b>	Polyclonal
<b>Isotype</b>	IgG

#### Applications

## The Abpromise guarantee

Our **Abpromise guarantee** covers the use of ab28829 in the following tested applications.

The application notes include recommended starting dilutions; optimal dilutions/concentrations should be determined by the end user.

Application	Abreviews	Notes
IHC-P	★★★★★ (6)	1/50 - 1/100.
WB	★★★★★ (1)	1/500 - 1/1000. Predicted molecular weight: 94 kDa.

## Target

### Function

Carries out a dual function: signal transduction and activation of transcription. Involved in interleukin-4 signalling.

### Sequence similarities

Belongs to the transcription factor STAT family.  
Contains 1 SH2 domain.

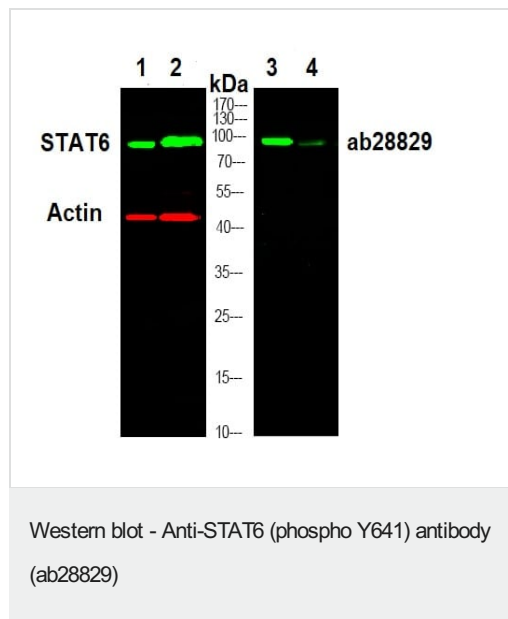
### Post-translational modifications

Tyrosine phosphorylated following stimulation by IL-4 and IL-3.

### Cellular localization

Cytoplasm. Nucleus. Translocated into the nucleus in response to phosphorylation.

## Images



**Lanes 1-2 :** STAT6 antibody

**Lanes 3-4 :** Anti-STAT6 (phospho Y641) antibody (ab28829) at 1/1000 dilution

**Lanes 1 & 3 :** K562 cells treated with 100 ng/mL IL4

**Lanes 2 & 4 :** K562 untreated cells

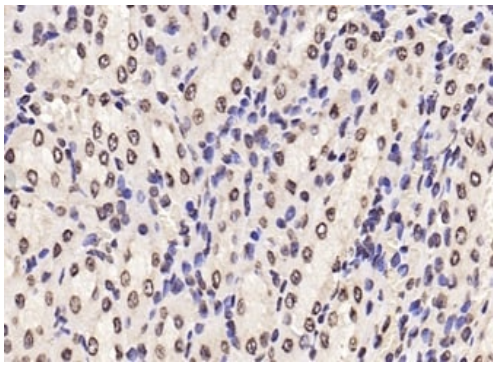
Lysates/proteins at 20 µg per lane.

### Secondary

**All lanes :** Dylight 800 secondary antibody at 1/10000 dilution

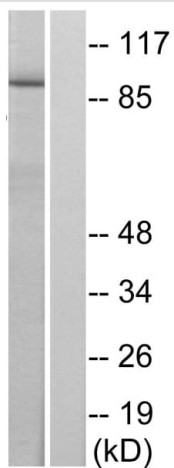
**Predicted band size:** 94 kDa

Loading control is Actin



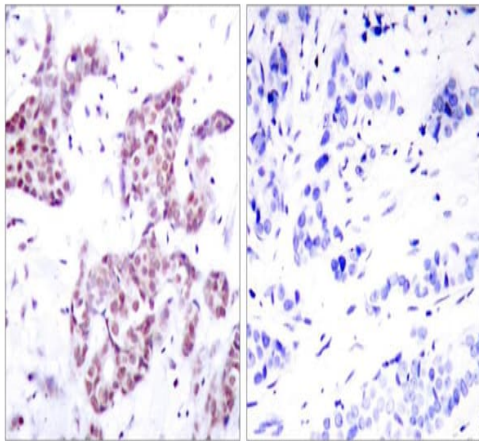
Immunohistochemical analysis of paraffin-embedded human kidney tissue using anti-STAT6 (phospho Y641) antibody (ab28829) at 1/100 dilution.

Immunohistochemistry (Formalin/PFA-fixed paraffin-embedded sections) - Anti-STAT6 (phospho Y641) antibody (ab28829)



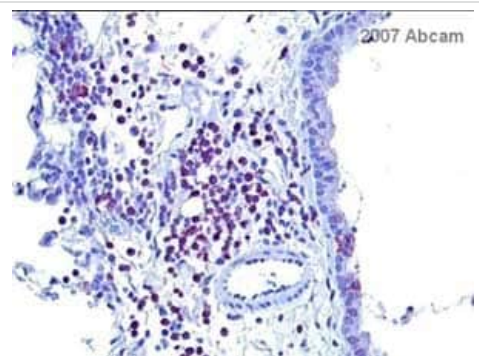
Western blot analysis of lysates from HeLa cells treated with IL-4, using STAT6 (Phospho-Tyr641) Antibody. The lane on the right is blocked with the phospho peptide.

Western blot - Anti-STAT6 (phospho Y641) antibody (ab28829)



Immunohistochemistry (Formalin/PFA-fixed paraffin-embedded sections) analysis of human breast carcinoma tissue labelling STAT6 (phospho Y641) with ab28829. Right pane - blocked with the phospho peptide.

Immunohistochemistry (Formalin/PFA-fixed paraffin-embedded sections) - Anti-STAT6 (phospho Y641) antibody (ab28829)



ab28829 at 1/100 staining mouse lung tissue sections by IHC-P. The tissue was formaldehyde fixed and blocked with serum. A heat mediated antigen retrieval step was performed prior to incubation with the antibody. Ab6720 (Goat polyclonal to Rabbit IgG H&L (biotin)) was used as the secondary antibody.

Immunohistochemistry (Formalin/PFA-fixed paraffin-embedded sections) - Anti-STAT6 (phospho Y641) antibody (ab28829)

This image is courtesy of an anonymous Abreview

**Please note:** All products are "FOR RESEARCH USE ONLY. NOT FOR USE IN DIAGNOSTIC PROCEDURES"

### Our Abpromise to you: Quality guaranteed and expert technical support

- Replacement or refund for products not performing as stated on the datasheet
- Valid for 12 months from date of delivery
- Response to your inquiry within 24 hours
- We provide support in Chinese, English, French, German, Japanese and Spanish
- Extensive multi-media technical resources to help you
- We investigate all quality concerns to ensure our products perform to the highest standards

If the product does not perform as described on this datasheet, we will offer a refund or replacement. For full details of the Abpromise, please visit <https://www.abcam.com/abpromise> or contact our technical team.

## Terms and conditions

---

- Guarantee only valid for products bought direct from Abcam or one of our authorized distributors