


Anti-STK38L/Ndr2 antibody ab126106

[1 References](#) [1 Image](#)

Overview

Product name	Anti-STK38L/Ndr2 antibody
Description	Rabbit polyclonal to STK38L/Ndr2
Host species	Rabbit
Tested applications	Suitable for: WB
Species reactivity	Reacts with: Human Predicted to work with: Mouse, Rat, Chicken, Cow, Xenopus laevis, Zebrafish 
Immunogen	Recombinant fragment corresponding to Human STK38L/Ndr2 aa 1-338. Database link: Q9Y2H1
Positive control	A549, HepG2, HeLa and HCT116 whole cell lysates.
General notes	<p>The Life Science industry has been in the grips of a reproducibility crisis for a number of years. Abcam is leading the way in addressing this with our range of recombinant monoclonal antibodies and knockout edited cell lines for gold-standard validation. Please check that this product meets your needs before purchasing.</p> <p>If you have any questions, special requirements or concerns, please send us an inquiry and/or contact our Support team ahead of purchase. Recommended alternatives for this product can be found below, along with publications, customer reviews and Q&As</p>

Properties

Form	Liquid
Storage instructions	Shipped at 4°C. Upon delivery aliquot. Store at -20°C or -80°C. Avoid freeze / thaw cycle.
Storage buffer	pH: 7.00 Preservative: 0.01% Thimerosal (merthiolate) Constituents: 78.99% PBS, 1% BSA, 20% Glycerol (glycerin, glycerine)
Purity	Immunogen affinity purified
Clonality	Polyclonal
Isotype	IgG

Applications

The Abpromise guarantee

Our **Abpromise guarantee** covers the use of ab126106 in the following tested applications.

The application notes include recommended starting dilutions; optimal dilutions/concentrations should be determined by the end user.

Application	Abreviews	Notes
WB		1/500 - 1/3000. Predicted molecular weight: 54 kDa.

Target

Function

Involved in the regulation of structural processes in differentiating and mature neuronal cells.

Tissue specificity

Ubiquitously expressed with highest levels observed in the thymus.

Sequence similarities

Belongs to the protein kinase superfamily. AGC Ser/Thr protein kinase family.
Contains 1 AGC-kinase C-terminal domain.
Contains 1 protein kinase domain.

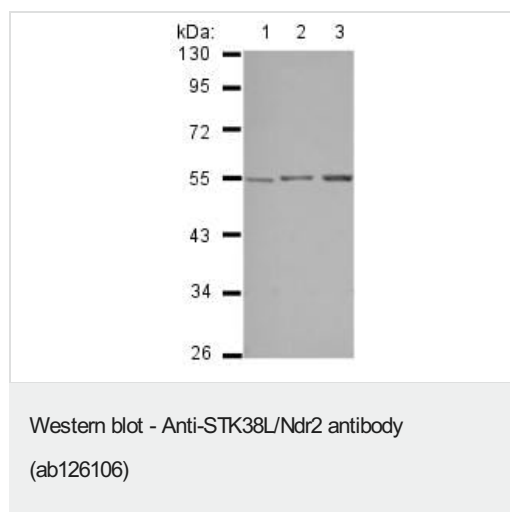
Post-translational modifications

Phosphorylated upon DNA damage, probably by ATM or ATR.

Cellular localization

Cytoplasm. Cytoplasm > cytoskeleton. Associated with the actin cytoskeleton.

Images



All lanes : Anti-STK38L/Ndr2 antibody (ab126106) at 1/1000 dilution

Lane 1 : A549 cell lysate

Lane 2 : HepG2 cell lysate

Lane 3 : HCT116 cell lysate

Lysates/proteins at 30 µg per lane.

Predicted band size: 54 kDa

10% SDS Page

Please note: All products are "FOR RESEARCH USE ONLY. NOT FOR USE IN DIAGNOSTIC PROCEDURES"

Our Abpromise to you: Quality guaranteed and expert technical support

- Replacement or refund for products not performing as stated on the datasheet
- Valid for 12 months from date of delivery
- Response to your inquiry within 24 hours

- We provide support in Chinese, English, French, German, Japanese and Spanish
- Extensive multi-media technical resources to help you
- We investigate all quality concerns to ensure our products perform to the highest standards

If the product does not perform as described on this datasheet, we will offer a refund or replacement. For full details of the Abpromise, please visit <https://www.abcam.com/abpromise> or contact our technical team.

Terms and conditions

- Guarantee only valid for products bought direct from Abcam or one of our authorized distributors