

## Product datasheet

### Anti-STON2 antibody ab121165

[6 Images](#)

#### Overview

---

<b>Product name</b>	Anti-STON2 antibody
<b>Description</b>	Rabbit polyclonal to STON2
<b>Host species</b>	Rabbit
<b>Tested applications</b>	<b>Suitable for:</b> IHC-P, ICC, WB
<b>Species reactivity</b>	<b>Reacts with:</b> Human
<b>Immunogen</b>	Recombinant fragment, corresponding to amino acids 299-437 of Human STON2.
<b>Positive control</b>	IHC-P: Human fallopian tube tissue; ICC: A431 cells; WB: K562 cell lysate.
<b>General notes</b>	<p>The Life Science industry has been in the grips of a reproducibility crisis for a number of years. Abcam is leading the way in addressing this with our range of recombinant monoclonal antibodies and knockout edited cell lines for gold-standard validation. Please check that this product meets your needs before purchasing.</p> <p>If you have any questions, special requirements or concerns, please send us an inquiry and/or contact our Support team ahead of purchase. Recommended alternatives for this product can be found below, along with publications, customer reviews and Q&amp;As</p>

#### Properties

---

<b>Form</b>	Liquid
<b>Storage instructions</b>	Shipped at 4°C. Store at -20°C.
<b>Storage buffer</b>	pH: 7.20 Preservative: 0.02% Sodium azide Constituents: 40% Glycerol (glycerin, glycerine), 59% PBS
<b>Purity</b>	Immunogen affinity purified
<b>Clonality</b>	Polyclonal
<b>Isotype</b>	IgG

#### Applications

---

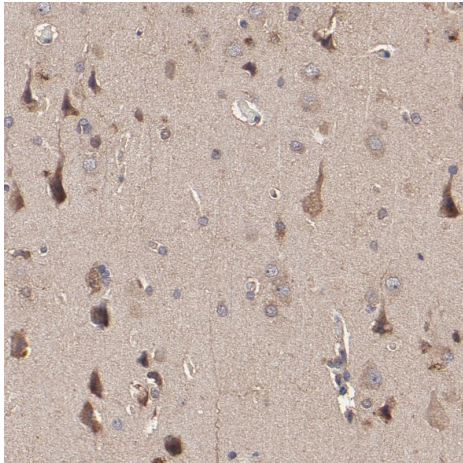
**The Abpromise guarantee** Our **Abpromise guarantee** covers the use of ab121165 in the following tested applications. The application notes include recommended starting dilutions; optimal dilutions/concentrations should be determined by the end user.

Application	Abreviews	Notes
IHC-P		1/50 - 1/200. Perform heat mediated antigen retrieval with citrate buffer pH 6 before commencing with IHC staining protocol. Use buffer at pH 6 for antigen retrieval.
ICC		Use a concentration of 0.25 - 2 µg/ml.
WB		Use a concentration of 0.04 - 0.4 µg/ml. Predicted molecular weight: 101 kDa.

## Target

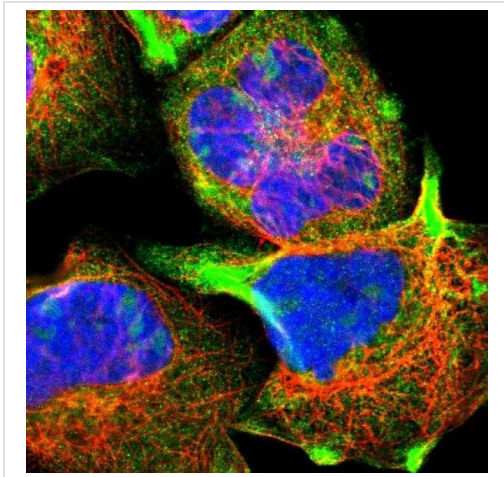
<b>Function</b>	Adapter protein involved in endocytic machinery. May be involved in the vesicle recycling. May facilitate clathrin-coated vesicle uncoating.
<b>Tissue specificity</b>	Ubiquitous.
<b>Sequence similarities</b>	Belongs to the Stoned B family. Contains 1 MHD (mu homology) domain. Contains 1 SHD (stonin homology) domain.
<b>Domain</b>	The Asn-Pro-Phe (NPF) motifs, which are found in proteins involved in the endocytic pathway, mediate the interaction with the EH domain of SYT1, SYT2, EPS15, EPS15R and ITSN1.
<b>Cellular localization</b>	Cytoplasm. Membrane. Some fraction is membrane-associated.

## Images



Immunohistochemistry (Formalin/PFA-fixed paraffin-embedded sections) analysis of human cerebral cortex tissue labelling STON2 with ab121165 at 1/50 dilution. Heat mediated antigen retrieval performed with citrate buffer pH 6 before commencing with IHC staining protocol.

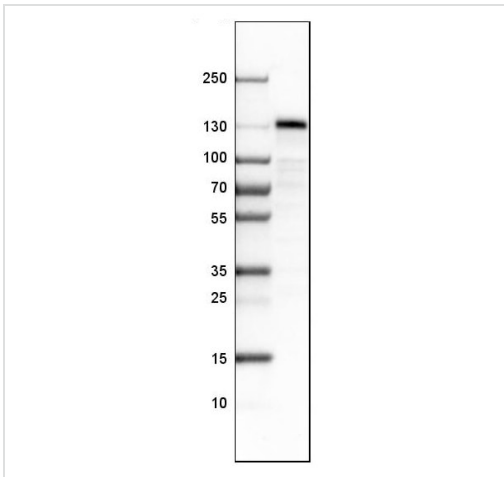
Immunohistochemistry (Formalin/PFA-fixed paraffin-embedded sections) - Anti-STON2 antibody (ab121165)



ab121165 at 4  $\mu\text{g/ml}$  staining STON2 in PFA/Triton X-100 fixed A431 cells by Immunofluorescence(green).

Note: positivity in nucleoli and cytoplasm.

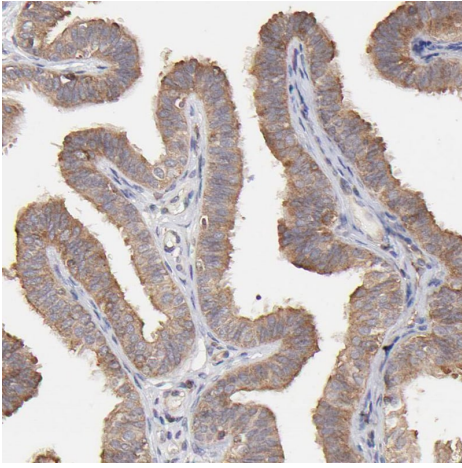
Immunocytochemistry - Anti-STON2 antibody  
(ab121165)



Anti-STON2 antibody (ab121165) + Human cell line K562

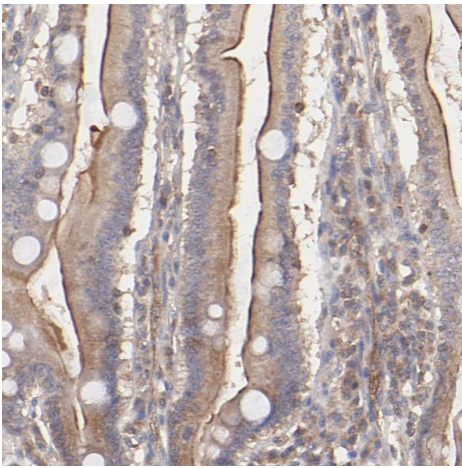
**Predicted band size:** 101 kDa

Western blot - Anti-STON2 antibody (ab121165)



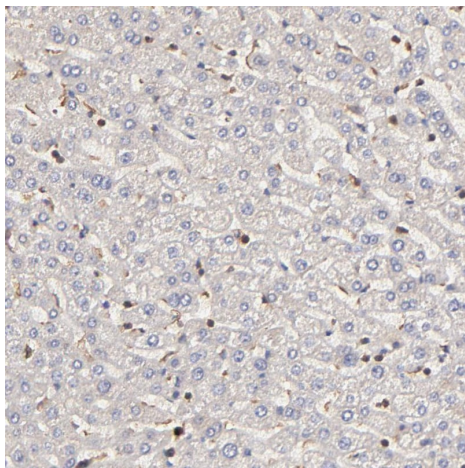
Immunohistochemistry (Formalin/PFA-fixed paraffin-embedded sections) - Anti-STON2 antibody (ab121165)

Immunohistochemistry (Formalin/PFA-fixed paraffin-embedded sections) analysis of human fallopian tube tissue labelling STON2 with ab121165 at 1/50 dilution. Heat mediated antigen retrieval performed with citrate buffer pH 6 before commencing with IHC staining protocol.



Immunohistochemistry (Formalin/PFA-fixed paraffin-embedded sections) - Anti-STON2 antibody (ab121165)

Immunohistochemistry (Formalin/PFA-fixed paraffin-embedded sections) analysis of human duodenum tissue labelling STON2 with ab121165 at 1/50 dilution. Heat mediated antigen retrieval performed with citrate buffer pH 6 before commencing with IHC staining protocol.



Immunohistochemistry (Formalin/PFA-fixed paraffin-embedded sections) - Anti-STON2 antibody (ab121165)

Immunohistochemistry (Formalin/PFA-fixed paraffin-embedded sections) analysis of human liver tissue labelling STON2 with ab121165 at 1/50 dilution. Heat mediated antigen retrieval performed with citrate buffer pH 6 before commencing with IHC staining protocol.

**Please note:** All products are "FOR RESEARCH USE ONLY. NOT FOR USE IN DIAGNOSTIC PROCEDURES"

### **Our Abpromise to you: Quality guaranteed and expert technical support**

---

- Replacement or refund for products not performing as stated on the datasheet
- Valid for 12 months from date of delivery
- Response to your inquiry within 24 hours
- We provide support in Chinese, English, French, German, Japanese and Spanish
- Extensive multi-media technical resources to help you
- We investigate all quality concerns to ensure our products perform to the highest standards

If the product does not perform as described on this datasheet, we will offer a refund or replacement. For full details of the Abpromise, please visit <https://www.abcam.com/abpromise> or contact our technical team.

### **Terms and conditions**

---

- Guarantee only valid for products bought direct from Abcam or one of our authorized distributors