

# Anti-STOX1 antibody ab122420

2 Images

### Overview

<b>Product name</b>	Anti-STOX1 antibody
<b>Description</b>	Rabbit polyclonal to STOX1
<b>Host species</b>	Rabbit
<b>Tested applications</b>	<b>Suitable for:</b> IHC-P, ICC/IF
<b>Species reactivity</b>	<b>Reacts with:</b> Human
<b>Immunogen</b>	antigen sequence: SEFQPGSIRL EKHPKLPATQ PIPRIKSPNE MVGQKPLGEI TTVLGSHLIY KKRISNPFQG LSHRGSTISK GHKIQKTS DL KPSQTGPKEK, corresponding to amino acids 440-529 of Human STOX1. <a href="#">Run BLAST with Expasy</a> <a href="#">Run BLAST with NCBI</a>
<b>Positive control</b>	Human adrenal gland tissue, U-251 MG cells
<b>General notes</b>	<p>The Life Science industry has been in the grips of a reproducibility crisis for a number of years. Abcam is leading the way in addressing this with our range of recombinant monoclonal antibodies and knockout edited cell lines for gold-standard validation. Please check that this product meets your needs before purchasing.</p> <p>If you have any questions, special requirements or concerns, please send us an inquiry and/or contact our Support team ahead of purchase. Recommended alternatives for this product can be found below, along with publications, customer reviews and Q&amp;As</p>

### Properties

<b>Form</b>	Liquid
<b>Storage instructions</b>	Shipped at 4°C. Upon delivery aliquot and store at -20°C. Avoid freeze / thaw cycles.
<b>Storage buffer</b>	pH: 7.20 Preservative: 0.02% Sodium azide Constituents: 59% PBS, 40% Glycerol (glycerin, glycerine)
<b>Purity</b>	Immunogen affinity purified
<b>Clonality</b>	Polyclonal
<b>Isotype</b>	IgG

### Applications

## The Abpromise guarantee

Our **Abpromise guarantee** covers the use of ab122420 in the following tested applications.

The application notes include recommended starting dilutions; optimal dilutions/concentrations should be determined by the end user.

Application	Abreviews	Notes
IHC-P		1/50 - 1/200. Perform heat mediated antigen retrieval with citrate buffer pH 6 before commencing with IHC staining protocol.
ICC/IF		Use a concentration of 0.25 - 2 µg/ml.

## Target

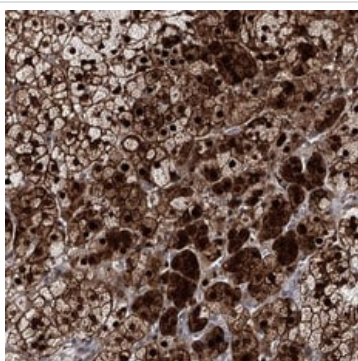
### Involvement in disease

Defects in STOX1 are the cause of pre-eclampsia/eclampsia 4 (PEE4) [MIM:609404]; also known as gestational proteinuric hypertension. Preeclampsia is a pregnancy-associated disease with maternal symptoms but placental origin. Unlike most other human disorders, it impacts 2 individuals, the mother and her child, both of whom can be severely affected. The pathological mechanism of PEE4 involves the loss of function of STOX1 in the placenta.

### Cellular localization

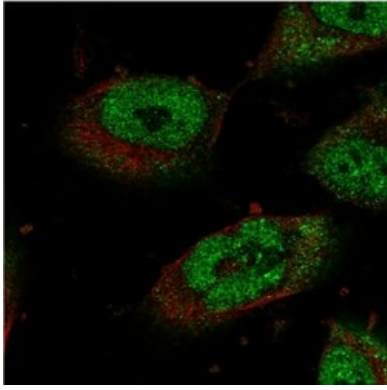
Nucleus; Nucleus > nucleolus and Cytoplasm. Nucleus. Either found in the cytoplasm or in the nucleus. Nuclear expression of isoform A seems to be restricted to polyploid trophoblast cells.

## Images



ab122420 at 1/50 dilution staining STOX1 in Paraffin-embedded Human adrenal gland tissue by Immunohistochemistry.

Immunohistochemistry (Formalin/PFA-fixed paraffin-embedded sections) - Anti-STOX1 antibody (ab122420)



Immunofluorescent staining of Human cell line U-251 MG using ab122420 at a concentration of 4 µg/ml. ab122420 staining is shown in green.

Immunocytochemistry/ Immunofluorescence - Anti-STOX1 antibody (ab122420)

**Please note:** All products are "FOR RESEARCH USE ONLY. NOT FOR USE IN DIAGNOSTIC PROCEDURES"

### Our Abpromise to you: Quality guaranteed and expert technical support

---

- Replacement or refund for products not performing as stated on the datasheet
- Valid for 12 months from date of delivery
- Response to your inquiry within 24 hours
- We provide support in Chinese, English, French, German, Japanese and Spanish
- Extensive multi-media technical resources to help you
- We investigate all quality concerns to ensure our products perform to the highest standards

If the product does not perform as described on this datasheet, we will offer a refund or replacement. For full details of the Abpromise, please visit <https://www.abcam.com/abpromise> or contact our technical team.

### Terms and conditions

---

- Guarantee only valid for products bought direct from Abcam or one of our authorized distributors