


Anti-Strumpellin antibody ab101222

★★★★★ [1 Abreviews](#) [4 References](#) [2 Images](#)

Overview

Product name	Anti-Strumpellin antibody
Description	Rabbit polyclonal to Strumpellin
Host species	Rabbit
Tested applications	Suitable for: ICC/IF, WB
Species reactivity	Reacts with: Mouse, Human Predicted to work with: Zebrafish, Orangutan 
Immunogen	Synthetic peptide. This information is proprietary to Abcam and/or its suppliers.
Positive control	This antibody can a positive signal in the following lysates: Mouse Brain Tissue; Mouse Spinal Cord Tissue; Mouse Lung Tissue; HeLa Whole Cell; HepG2 Whole Cell.
General notes	<p>The Life Science industry has been in the grips of a reproducibility crisis for a number of years. Abcam is leading the way in addressing this with our range of recombinant monoclonal antibodies and knockout edited cell lines for gold-standard validation. Please check that this product meets your needs before purchasing.</p> <p>If you have any questions, special requirements or concerns, please send us an inquiry and/or contact our Support team ahead of purchase. Recommended alternatives for this product can be found below, along with publications, customer reviews and Q&As</p>

Properties

Form	Liquid
Storage instructions	Shipped at 4°C. Store at +4°C short term (1-2 weeks). Upon delivery aliquot. Store at -20°C or -80°C. Avoid freeze / thaw cycle.
Storage buffer	<p>pH: 7.40</p> <p>Preservative: 0.02% Sodium azide</p> <p>Constituent: PBS</p> <p>Batches of this product that have a concentration < 1mg/ml may have BSA added as a stabilising agent. If you would like information about the formulation of a specific lot, please contact our scientific support team who will be happy to help.</p>
Purity	Immunogen affinity purified
Clonality	Polyclonal

Isotype

IgG

Applications

The Abpromise guarantee

Our **Abpromise guarantee** covers the use of ab101222 in the following tested applications.

The application notes include recommended starting dilutions; optimal dilutions/concentrations should be determined by the end user.

Application	Abreviews	Notes
ICC/IF		Use a concentration of 5 µg/ml.
WB	★★★★★ (1)	Use a concentration of 1 µg/ml. Detects a band of approximately 134 kDa (predicted molecular weight: 134 kDa).

Target

Function

Component of the WASH complex, a complex present at the surface of endosomes that recruits and activates the Arp2/3 complex to induce actin polymerization. The WASH complex plays a key role in the fission of tubules that serve as transport intermediates during endosome sorting.

Tissue specificity

Expressed ubiquitously.

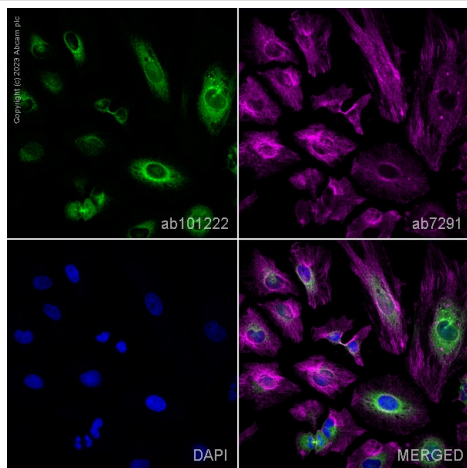
Involvement in disease

Defects in KIAA0196 are the cause of spastic paraplegia autosomal dominant type 8 (SPG8) [MIM:603563]. Spastic paraplegia is a neurodegenerative disorder characterized by a slow, gradual, progressive weakness and spasticity of the lower limbs. Spastic paraplegia is a neurodegenerative disorder characterized by a slow, gradual, progressive weakness and spasticity of the lower limbs. Rate of progression and the severity of symptoms are quite variable. Initial symptoms may include difficulty with balance, weakness and stiffness in the legs, muscle spasms, and dragging the toes when walking. In some forms of the disorder, bladder symptoms (such as incontinence) may appear, or the weakness and stiffness may spread to other parts of the body.

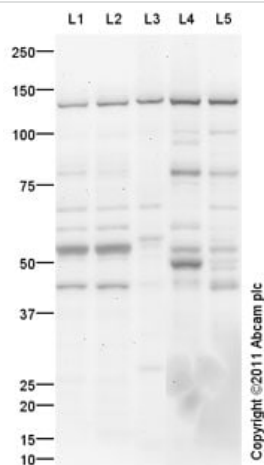
Sequence similarities

Belongs to the strumpellin family.

Images



Immunocytochemistry/ Immunofluorescence - Anti-Strumpellin antibody (ab101222)



Western blot - Anti-Strumpellin antibody (ab101222)

ab101222 staining Strumpellin in HeLa cells. The cells were fixed with 4% paraformaldehyde (10 min), permeabilized with 0.1% PBS-Tween for 5 minutes and then blocked with 1% BSA/10% normal goat serum/0.3M glycine in 0.1%PBS-Tween for 1h. The cells were then incubated overnight at 4°C with ab101222 at 5µg/ml and **ab7291**, Mouse monoclonal [DM1A] to alpha Tubulin - Loading Control. Cells were then incubated with **ab150081**, Goat polyclonal Secondary Antibody to Rabbit IgG - H&L (Alexa Fluor® 488), pre-adsorbed at 1/1000 dilution (shown in green) and **ab150120**, Goat polyclonal Secondary Antibody to Mouse IgG - H&L (Alexa Fluor® 594), pre-adsorbed at 1/1000 dilution (shown in pseudocolour magenta). Nuclear DNA was labelled with DAPI (shown in blue).

Image was acquired with a high-content analyser (Operetta CLS, Perkin Elmer) and a maximum intensity projection of confocal sections is shown.

All lanes : Anti-Strumpellin antibody (ab101222) at 1 µg/ml

Lane 1 : Brain (Mouse) Tissue Lysate

Lane 2 : Spinal Cord (Mouse) Tissue Lysate

Lane 3 : Mouse lung normal tissue lysate - total protein (**ab29297**)

Lane 4 : HeLa (Human epithelial carcinoma cell line) Whole Cell Lysate

Lane 5 : HepG2 (Human hepatocellular liver carcinoma cell line) Whole Cell Lysate

Lysates/proteins at 10 µg per lane.

Secondary

All lanes : Goat Anti-Rabbit IgG H&L (HRP) preadsorbed (**ab97080**) at 1/5000 dilution

Developed using the ECL technique.

Performed under reducing conditions.

Predicted band size: 134 kDa

Observed band size: 134 kDa

Additional bands at: 45 kDa, 50 kDa, 55 kDa, 80 kDa. We are unsure as to the identity of these extra bands.

Exposure time: 3 minutes

Please note: All products are "FOR RESEARCH USE ONLY. NOT FOR USE IN DIAGNOSTIC PROCEDURES"

Our Abpromise to you: Quality guaranteed and expert technical support

- Replacement or refund for products not performing as stated on the datasheet
- Valid for 12 months from date of delivery
- Response to your inquiry within 24 hours

- We provide support in Chinese, English, French, German, Japanese and Spanish
- Extensive multi-media technical resources to help you
- We investigate all quality concerns to ensure our products perform to the highest standards

If the product does not perform as described on this datasheet, we will offer a refund or replacement. For full details of the Abpromise, please visit <https://www.abcam.com/abpromise> or contact our technical team.

Terms and conditions

- Guarantee only valid for products bought direct from Abcam or one of our authorized distributors