


Product datasheet

Anti-SUCLA2 antibody [EPR14925] ab183513

Recombinant RabMAb

[1 References](#) [6 Images](#)

Overview

Product name	Anti-SUCLA2 antibody [EPR14925]
Description	Rabbit monoclonal [EPR14925] to SUCLA2
Host species	Rabbit
Tested applications	Suitable for: Flow Cyt (Intra), WB, IHC-P, ICC/IF, IP
Species reactivity	Reacts with: Human Predicted to work with: Mouse, Rat 
Immunogen	Synthetic peptide. This information is proprietary to Abcam and/or its suppliers.
Positive control	Human fetal liver, 293, HepG2 and Molt4 cell lysates, Human breast tissue, HepG2 and 293 cells
General notes	<p>This product is a recombinant monoclonal antibody, which offers several advantages including:</p> <ul style="list-style-type: none"> - High batch-to-batch consistency and reproducibility - Improved sensitivity and specificity - Long-term security of supply - Animal-free production <p>For more information see here.</p> <p>Our RabMAb[®] technology is a patented hybridoma-based technology for making rabbit monoclonal antibodies. For details on our patents, please refer to RabMAb[®] patents.</p>

Properties

Form	Liquid
Storage instructions	Shipped at 4°C. Store at +4°C short term (1-2 weeks). Upon delivery aliquot. Store at -20°C long term. Avoid freeze / thaw cycle.
Storage buffer	pH: 7.2 Preservative: 0.01% Sodium azide Constituents: 40% Glycerol (glycerin, glycerine), 0.05% BSA, 59% PBS
Purity	Protein A purified
Clonality	Monoclonal
Clone number	EPR14925
Isotype	IgG

Applications

The Abpromise guarantee

Our **Abpromise guarantee** covers the use of ab183513 in the following tested applications.

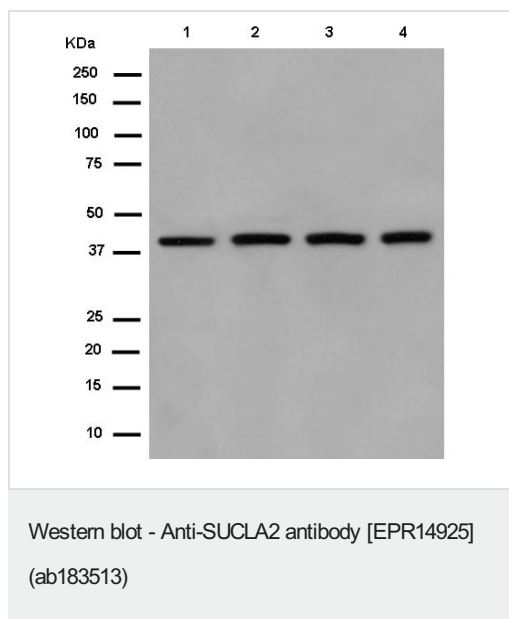
The application notes include recommended starting dilutions; optimal dilutions/concentrations should be determined by the end user.

Application	Abreviews	Notes
Flow Cyt (Intra)		1/100. ab172730 - Rabbit monoclonal IgG, is suitable for use as an isotype control with this antibody.
WB		1/10000 - 1/50000. Predicted molecular weight: 50 kDa.
IHC-P		1/100 - 1/250. Perform heat mediated antigen retrieval with Tris/EDTA buffer pH 9.0 before commencing with IHC staining protocol.
ICC/IF		1/100 - 1/250.
IP		1/40 - 1/60.

Target

Function	Catalyzes the ATP-dependent ligation of succinate and CoA to form succinyl-CoA.
Tissue specificity	Widely expressed. Not expressed in liver and lung.
Pathway	Carbohydrate metabolism; tricarboxylic acid cycle; succinate from succinyl-CoA (ligase route): step 1/1.
Involvement in disease	Mitochondrial DNA depletion syndrome 5
Sequence similarities	Belongs to the succinate/malate CoA ligase beta subunit family. Contains 1 ATP-grasp domain.
Cellular localization	Mitochondrion.

Images



All lanes : Anti-SUCLA2 antibody [EPR14925] (ab183513) at 1/50000 dilution

Lane 1 : Human fetal liver tissue lysate

Lane 2 : 293 cell lysate

Lane 3 : HepG2 cell lysate

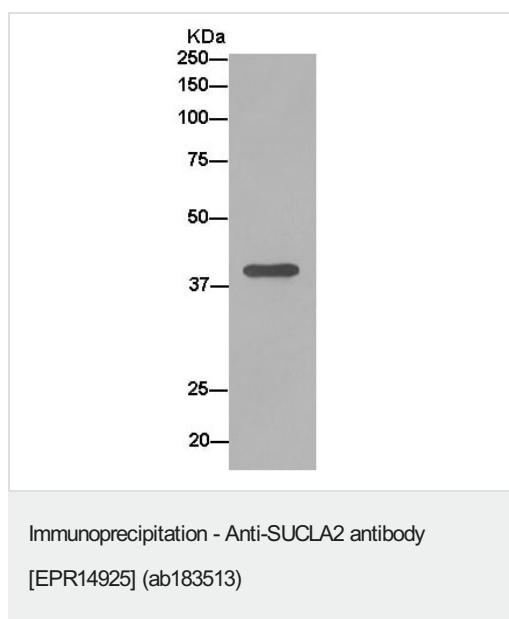
Lane 4 : Molt-4 cell lysate

Lysates/proteins at 20 µg per lane.

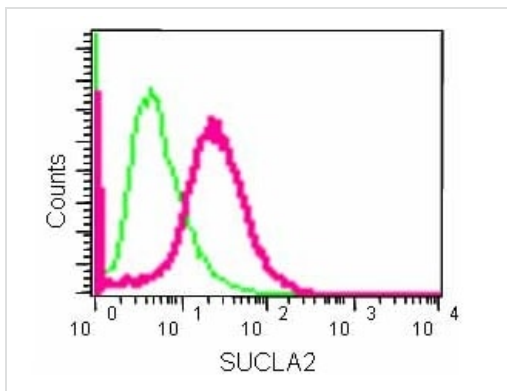
Secondary

All lanes : Goat Anti-Rabbit IgG, (H+L), Peroxidase conjugated at 1/1000 dilution

Predicted band size: 50 kDa

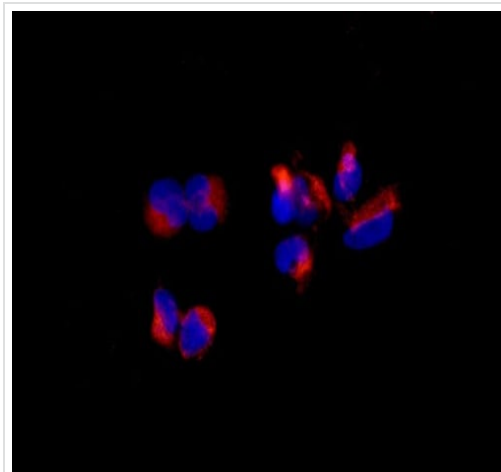


Western blot analysis of HepG2 cell lysate immunoprecipitated using ab183513 at 1/50 dilution. Anti-Rabbit IgG (HRP), specific to the non-reduced form of IgG secondary antibody used at 1/1500 dilution.



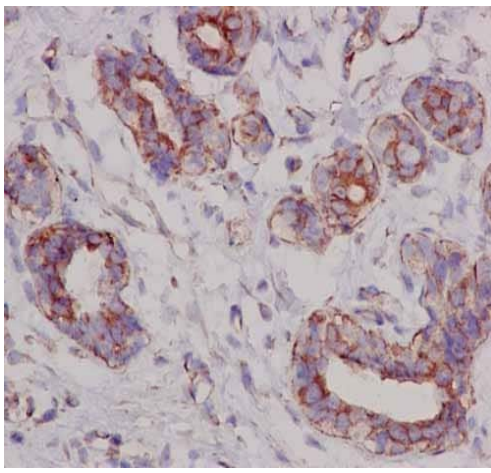
Flow Cytometry (Intracellular) - Anti-SUCLA2
antibody [EPR14925] (ab183513)

Intracellular Flow Cytometry analysis of 2% paraformaldehyde fixed 293 cells labeling SUCLA2 using ab183513 at a 1/100 dilution (green) or Rabbit monoclonal IgG (red), using a Goat anti rabbit IgG (FITC) secondary antibody at a 1/150 dilution.



Immunocytochemistry/ Immunofluorescence - Anti-SUCLA2 antibody [EPR14925] (ab183513)

Immunofluorescent staining of 4% paraformaldehyde fixed 293 cells, labeling SUCLA2 using ab183513 at a 1/250 dilution and a Goat anti rabbit IgG (Alexa Fluor® 555) secondary antibody at a 1/200 dilution and counterstained with Dapi.

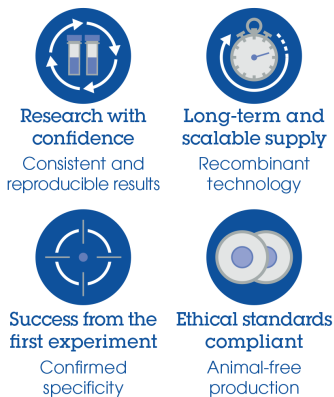


Immunohistochemistry (Formalin/PFA-fixed paraffin-embedded sections) - Anti-SUCLA2 antibody [EPR14925] (ab183513)

Immunohistochemical analysis of paraffin-embedded Human breast tissue labeling SUCLA2 using ab183513 at a 1/250 dilution, using a HRP Polymer for Rabbit IgG secondary antibody and counterstained with Hematoxylin.

Perform heat mediated antigen retrieval with EDTA buffer pH 9 before commencing with IHC staining protocol.

Why choose a recombinant antibody?



Anti-SUCLA2 antibody [EPR14925] (ab183513)

Please note: All products are "FOR RESEARCH USE ONLY. NOT FOR USE IN DIAGNOSTIC PROCEDURES"

Our Abpromise to you: Quality guaranteed and expert technical support

- Replacement or refund for products not performing as stated on the datasheet
- Valid for 12 months from date of delivery
- Response to your inquiry within 24 hours
- We provide support in Chinese, English, French, German, Japanese and Spanish
- Extensive multi-media technical resources to help you
- We investigate all quality concerns to ensure our products perform to the highest standards

If the product does not perform as described on this datasheet, we will offer a refund or replacement. For full details of the Abpromise, please visit <https://www.abcam.com/abpromise> or contact our technical team.

Terms and conditions

- Guarantee only valid for products bought direct from Abcam or one of our authorized distributors