

Product datasheet

Anti-Sulfatase 2/SULF2 antibody [2B4] ab113405

★★★★★ [1 Abreviews](#) [4 References](#) [1 Image](#)

Overview

Product name	Anti-Sulfatase 2/SULF2 antibody [2B4]
Description	Mouse monoclonal [2B4] to Sulfatase 2/SULF2
Host species	Mouse
Specificity	ab113405 shows no cross-reactivity with Sulfatase 1
Tested applications	Suitable for: IHC-P
Species reactivity	Reacts with: Human
Immunogen	Recombinant full length protein corresponding to Human Sulfatase 2/SULF2.
Epitope	ab113405 recognises an epitope located in the C terminal domain of Sulfatase 2/SULF2.
Positive control	Sulfatase 2/SULF2 transfected HEK29 cells or non-small-cell Human lung carcinoma tissue
General notes	<p>The Life Science industry has been in the grips of a reproducibility crisis for a number of years. Abcam is leading the way in addressing this with our range of recombinant monoclonal antibodies and knockout edited cell lines for gold-standard validation. Please check that this product meets your needs before purchasing.</p> <p>If you have any questions, special requirements or concerns, please send us an inquiry and/or contact our Support team ahead of purchase. Recommended alternatives for this product can be found below, along with publications, customer reviews and Q&As</p>

Properties

Form	Liquid
Storage instructions	Shipped at 4°C. Upon delivery aliquot and store at -20°C. Avoid freeze / thaw cycles.
Storage buffer	Preservative: 0.09% Sodium azide Constituent: 99% PBS
Purity	Protein G purified
Clonality	Monoclonal
Clone number	2B4
Isotype	IgG1

Applications

The Abpromise guarantee

Our **Abpromise guarantee** covers the use of ab113405 in the following tested applications.

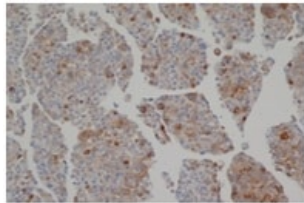
The application notes include recommended starting dilutions; optimal dilutions/concentrations should be determined by the end user.

Application	Abreviews	Notes
IHC-P		1/25. Perform heat mediated antigen retrieval via the pressure cooker method before commencing with IHC staining protocol. Sodium citrate buffer pH 6.0 is recommended for this purpose.

Target

Function	Exhibits arylsulfatase activity and highly specific endoglucosamine-6-sulfatase activity. It can remove sulfate from the C-6 position of glucosamine within specific subregions of intact heparin.
Tissue specificity	Expressed at highest levels in the ovary, skeletal muscle, stomach, brain, uterus, heart, kidney and placenta.
Sequence similarities	Belongs to the sulfatase family.
Post-translational modifications	The conversion to 3-oxoalanine (also known as C-formylglycine, FGly), of a serine or cysteine residue in prokaryotes and of a cysteine residue in eukaryotes, is critical for catalytic activity.
Cellular localization	Endoplasmic reticulum. Golgi apparatus > Golgi stack. Cell surface. Also localized on the cell surface.

Images



Paraffin embedded HEK293 cells transfected with Sulfatase 2/SULF2 stained with ab113405.

Immunohistochemistry (Formalin/PFA-fixed paraffin-embedded sections) - Anti-Sulfatase 2/SULF2 antibody [2B4] (ab113405)

Please note: All products are "FOR RESEARCH USE ONLY. NOT FOR USE IN DIAGNOSTIC PROCEDURES"

Our Abpromise to you: Quality guaranteed and expert technical support

- Replacement or refund for products not performing as stated on the datasheet
- Valid for 12 months from date of delivery
- Response to your inquiry within 24 hours
- We provide support in Chinese, English, French, German, Japanese and Spanish
- Extensive multi-media technical resources to help you
- We investigate all quality concerns to ensure our products perform to the highest standards

If the product does not perform as described on this datasheet, we will offer a refund or replacement. For full details of the Abpromise, please visit <https://www.abcam.com/abpromise> or contact our technical team.

Terms and conditions

- Guarantee only valid for products bought direct from Abcam or one of our authorized distributors