



Product datasheet

Anti-Sulfatase 2/SULF2 antibody ab232835

[1 References](#) [4 Images](#)

Overview

Product name	Anti-Sulfatase 2/SULF2 antibody
Description	Rabbit polyclonal to Sulfatase 2/SULF2
Host species	Rabbit
Tested applications	Suitable for: WB, ICC/IF, IHC-P
Species reactivity	Reacts with: Human, Pig
Immunogen	Recombinant fragment corresponding to Human Sulfatase 2/SULF2 aa 300-650. N-terminal His-tag and GST-tag; Expressed in E.coli. Database link: Q8IWU5
	 Run BLAST with  Run BLAST with
Positive control	WB: Pig liver lysate; Recombinant human Sulfatase 2/SULF2 protein. IHC-P: Human stomach tissue. ICC/IF: HepG2 cells.
General notes	<p>The Life Science industry has been in the grips of a reproducibility crisis for a number of years. Abcam is leading the way in addressing this with our range of recombinant monoclonal antibodies and knockout edited cell lines for gold-standard validation. Please check that this product meets your needs before purchasing.</p> <p>If you have any questions, special requirements or concerns, please send us an inquiry and/or contact our Support team ahead of purchase. Recommended alternatives for this product can be found below, along with publications, customer reviews and Q&As</p>

Properties

Form	Liquid
Storage instructions	Shipped at 4°C. Store at +4°C short term (1-2 weeks). Upon delivery aliquot. Store at -20°C long term. Avoid freeze / thaw cycle.
Storage buffer	pH: 7.40 Preservative: 0.011% Proclin 300 Constituents: 55.77% Glycerol (glycerin, glycerine), 44.219% PBS
Purity	Immunogen affinity purified
Purification notes	Antigen-specific affinity chromatography followed by Protein A affinity chromatography.
Clonality	Polyclonal
Isotype	IgG

Applications

The Abpromise guarantee Our **Abpromise guarantee** covers the use of ab232835 in the following tested applications.

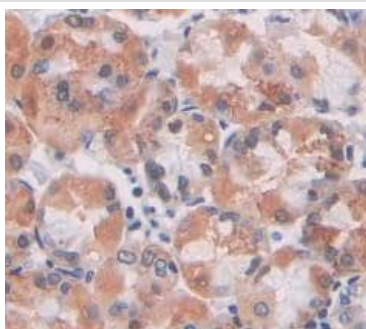
The application notes include recommended starting dilutions; optimal dilutions/concentrations should be determined by the end user.

Application	Abreviews	Notes
WB		Use a concentration of 0.2 - 2 µg/ml. Predicted molecular weight: 100 kDa.
ICC/IF		Use a concentration of 5 - 20 µg/ml.
IHC-P		Use a concentration of 5 - 20 µg/ml.

Target

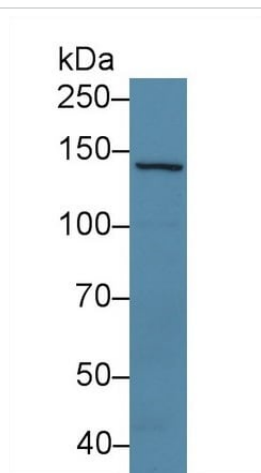
Function	Exhibits arylsulfatase activity and highly specific endoglucosamine-6-sulfatase activity. It can remove sulfate from the C-6 position of glucosamine within specific subregions of intact heparin.
Tissue specificity	Expressed at highest levels in the ovary, skeletal muscle, stomach, brain, uterus, heart, kidney and placenta.
Sequence similarities	Belongs to the sulfatase family.
Post-translational modifications	The conversion to 3-oxoalanine (also known as C-formylglycine, FGly), of a serine or cysteine residue in prokaryotes and of a cysteine residue in eukaryotes, is critical for catalytic activity.
Cellular localization	Endoplasmic reticulum. Golgi apparatus > Golgi stack. Cell surface. Also localized on the cell surface.

Images



Formalin-fixed, paraffin-embedded human stomach tissue stained for Sulfatase 2/SULF2 using ab232835 at 20 µg/ml in immunohistochemical analysis. DAB staining.

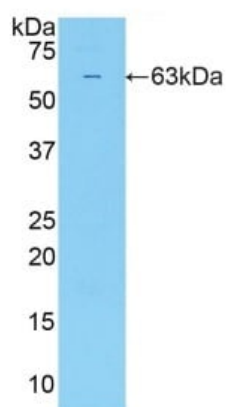
Immunohistochemistry (Formalin/PFA-fixed paraffin-embedded sections) - Anti-Sulfatase 2/SULF2 antibody (ab232835)



Western blot - Anti-Sulfatase 2/SULF2 antibody
(ab232835)

Anti-Sulfatase 2/SULF2 antibody (ab232835) at 2 µg/ml + Pig liver
lysate

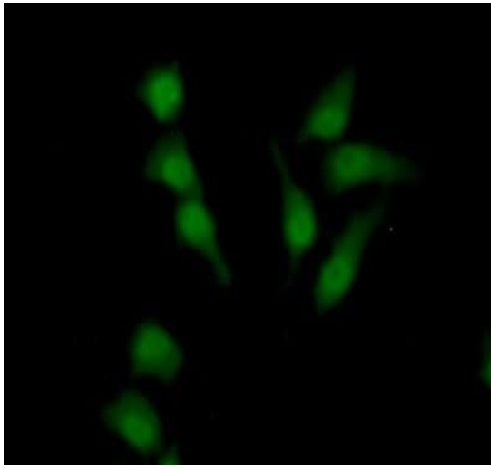
Predicted band size: 100 kDa



Western blot - Anti-Sulfatase 2/SULF2 antibody
(ab232835)

Anti-Sulfatase 2/SULF2 antibody (ab232835) at 2 µg/ml +
Recombinant human Sulfatase 2/SULF2 protein

Predicted band size: 100 kDa



Immunocytochemistry/ Immunofluorescence - Anti-Sulfatase 2/SULF2 antibody (ab232835)

HepG2 (human liver hepatocellular carcinoma cell line) cells stained for Sulfatase 2/SULF2 using ab232835 at 20 µg/ml in ICC/IF. FITC-labeled secondary antibody.

Please note: All products are "FOR RESEARCH USE ONLY. NOT FOR USE IN DIAGNOSTIC PROCEDURES"

Our Abpromise to you: Quality guaranteed and expert technical support

- Replacement or refund for products not performing as stated on the datasheet
- Valid for 12 months from date of delivery
- Response to your inquiry within 24 hours
- We provide support in Chinese, English, French, German, Japanese and Spanish
- Extensive multi-media technical resources to help you
- We investigate all quality concerns to ensure our products perform to the highest standards

If the product does not perform as described on this datasheet, we will offer a refund or replacement. For full details of the Abpromise, please visit <https://www.abcam.com/abpromise> or contact our technical team.

Terms and conditions

- Guarantee only valid for products bought direct from Abcam or one of our authorized distributors