

Product datasheet

Anti-Sumo 2 + Sumo 3 + Sumo 4 antibody [EPR300(2)] - BSA and Azide free ab247789

Recombinant RabMAb

[4 Images](#)

Overview

Product name	Anti-Sumo 2 + Sumo 3 + Sumo 4 antibody [EPR300(2)] - BSA and Azide free
Description	Rabbit monoclonal [EPR300(2)] to Sumo 2 + Sumo 3 + Sumo 4 - BSA and Azide free
Host species	Rabbit
Tested applications	Suitable for: IHC-P, WB Unsuitable for: Flow Cyt or IP
Species reactivity	Reacts with: Human
Immunogen	Synthetic peptide. This information is proprietary to Abcam and/or its suppliers.
General notes	<p>ab247789 is the carrier-free version of ab109196.</p> <p>Our carrier-free antibodies are typically supplied in a PBS-only formulation, purified and free of BSA, sodium azide and glycerol. The carrier-free buffer and high concentration allow for increased conjugation efficiency.</p> <p>This conjugation-ready format is designed for use with fluorochromes, metal isotopes, oligonucleotides, and enzymes, which makes them ideal for antibody labelling, functional and cell-based assays, flow-based assays (e.g. mass cytometry) and Multiplex Imaging applications.</p> <p>Use our conjugation kits for antibody conjugates that are ready-to-use in as little as 20 minutes with <1 minute hands-on-time and 100% antibody recovery: available for fluorescent dyes, HRP, biotin and gold.</p> <p>This product is compatible with the Maxpar[®] Antibody Labeling Kit from Fluidigm, without the need for antibody preparation. Maxpar[®] is a trademark of Fluidigm Canada Inc.</p> <p>This product is a recombinant monoclonal antibody, which offers several advantages including:</p> <ul style="list-style-type: none">- High batch-to-batch consistency and reproducibility- Improved sensitivity and specificity- Long-term security of supply- Animal-free production <p>For more information see here.</p> <p>Our RabMAb[®] technology is a patented hybridoma-based technology for making rabbit monoclonal antibodies. For details on our patents, please refer to RabMAb[®] patents.</p> <p>Mouse, Rat: We have preliminary internal testing data to indicate this antibody may not react with</p>

these species. Please contact us for more information.

Properties

Form	Liquid
Storage instructions	Shipped at 4°C. Store at +4°C. Do Not Freeze.
Storage buffer	pH: 7.2 Constituent: PBS
Carrier free	Yes
Purity	Protein A purified
Clonality	Monoclonal
Clone number	EPR300(2)
Isotype	IgG

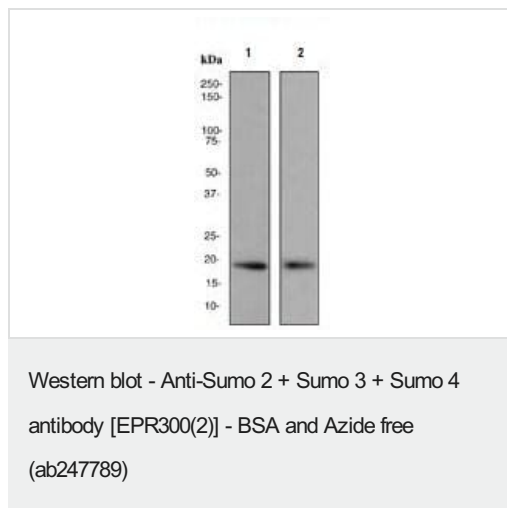
Applications

The Abpromise guarantee Our **Abpromise guarantee** covers the use of ab247789 in the following tested applications. The application notes include recommended starting dilutions; optimal dilutions/concentrations should be determined by the end user.

Application	Abreviews	Notes
IHC-P		Use at an assay dependent concentration. Perform heat mediated antigen retrieval with citrate buffer pH 6 before commencing with IHC staining protocol.
WB		Use at an assay dependent concentration. Predicted molecular weight: 12 kDa.

Application notes Is unsuitable for Flow Cyt or IP.

Images



All lanes : Anti-Sumo 2 + Sumo 3 + Sumo 4 antibody [EPR300(2)] (**ab109196**) at 1/1000 dilution

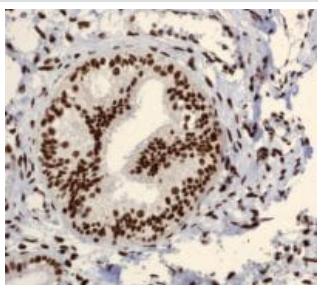
Lane 1 : HeLa cell lysate

Lane 2 : Jurkat cell lysate

Lysates/proteins at 10 µg per lane.

Predicted band size: 12 kDa

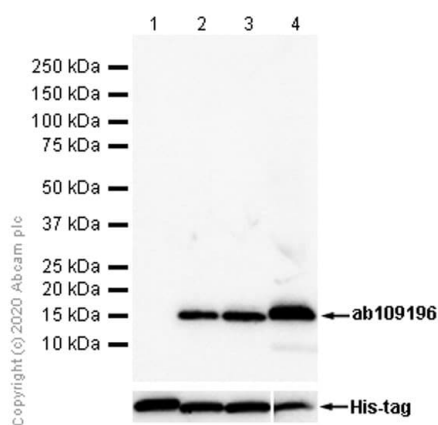
This data was developed using [ab109196](#), the same antibody clone in a different buffer formulation.



Immunohistochemistry (Formalin/PFA-fixed paraffin-embedded sections) - Anti-Sumo 2 + Sumo 3 + Sumo 4 antibody [EPR300(2)] - BSA and Azide free (ab247789)

This data was developed using [ab109196](#), the same antibody clone in a different buffer formulation.

[ab109196](#), at 1/100, staining Sumo 2 + Sumo 3 + Sumo 4 in paraffin-embedded Human ovarian tissue by Immunohistochemistry. Perform heat mediated antigen retrieval with citrate buffer pH 6 before commencing with IHC staining protocol.



Western blot - Anti-Sumo 2 + Sumo 3 + Sumo 4 antibody [EPR300(2)] - BSA and Azide free (ab247789)

All lanes : Anti-Sumo 2 + Sumo 3 + Sumo 4 antibody [EPR300(2)] ([ab109196](#)) at 1/200 dilution

Lane 1 : Recombinant Human Sumo 1 protein ([ab140417](#)) at 0.01 μ g

Lane 2 : Recombinant Human Sumo 2 protein ([ab140420](#)) at 0.01 μ g

Lane 3 : Recombinant Human Sumo 3 protein ([ab140414](#)) at 0.01 μ g

Lane 4 : Recombinant Human Sumo 4 protein ([ab157025](#)) at 0.1 μ g

Secondary

All lanes : Goat Anti-Rabbit IgG H&L (HRP) ([ab97051](#)) at 1/20000 dilution

Developed using the ECL technique.

Predicted band size: 12 kDa

Observed band size: 16 kDa

Exposure time: 20 seconds

Blocking buffer: 5% NFDM/TBST

This data was developed using [ab109196](#), the same antibody clone in a different buffer formulation.

Why choose a recombinant antibody?



Research with confidence
Consistent and reproducible results



Long-term and scalable supply
Recombinant technology



Success from the first experiment
Confirmed specificity



Ethical standards compliant
Animal-free production

Anti-Sumo 2 + Sumo 3 + Sumo 4 antibody
[EPR300(2)] - BSA and Azide free (ab247789)

Please note: All products are "FOR RESEARCH USE ONLY. NOT FOR USE IN DIAGNOSTIC PROCEDURES"

Our Abpromise to you: Quality guaranteed and expert technical support

- Replacement or refund for products not performing as stated on the datasheet
- Valid for 12 months from date of delivery
- Response to your inquiry within 24 hours
- We provide support in Chinese, English, French, German, Japanese and Spanish
- Extensive multi-media technical resources to help you
- We investigate all quality concerns to ensure our products perform to the highest standards

If the product does not perform as described on this datasheet, we will offer a refund or replacement. For full details of the Abpromise, please visit <https://www.abcam.com/abpromise> or contact our technical team.

Terms and conditions

- Guarantee only valid for products bought direct from Abcam or one of our authorized distributors