

## Product datasheet

# Anti-Sumo 2 + Sumo 3 + Sumo 4 antibody [EPR7163] ab126606

Recombinant RabMAb

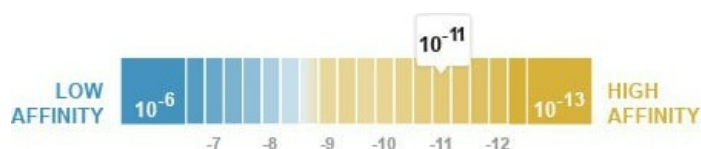
[4 References](#) [6 Images](#)

### Overview

Product name	Anti-Sumo 2 + Sumo 3 + Sumo 4 antibody [EPR7163]
Description	Rabbit monoclonal [EPR7163] to Sumo 2 + Sumo 3 + Sumo 4
Host species	Rabbit
Tested applications	<b>Suitable for:</b> Flow Cyt (Intra), WB, ICC/IF <b>Unsuitable for:</b> IHC-P
Species reactivity	<b>Reacts with:</b> Human
Immunogen	Synthetic peptide within Human Sumo 2 + Sumo 3 + Sumo 4 aa 50-150 (Cysteine residue). The exact sequence is proprietary. The immunogen sequence is based upon a region in Sumo 4 that has significant homology with Sumo 2 and Sumo 3. Database link: <a href="#">Q6EEV6</a>
Positive control	HepG3, 293T and Jurkat whole cell lysate ( <a href="#">ab7899</a> ); Human spleen tissue lysate; HepG2 cells.
General notes	This product is a recombinant monoclonal antibody, which offers several advantages including: <ul style="list-style-type: none"> <li>- High batch-to-batch consistency and reproducibility</li> <li>- Improved sensitivity and specificity</li> <li>- Long-term security of supply</li> <li>- Animal-free production</li> </ul> For more information <a href="#">see here</a> . Our RabMAb <sup>®</sup> technology is a patented hybridoma-based technology for making rabbit monoclonal antibodies. For details on our patents, please refer to <a href="#">RabMAb<sup>®</sup> patents</a> .

### Properties

Form	Liquid
Storage instructions	Shipped at 4°C. Store at -20°C. Stable for 12 months at -20°C.
Dissociation constant (K <sub>D</sub> )	K <sub>D</sub> = 2.82 x 10 <sup>-11</sup> M



[Learn more about K<sub>D</sub>](#)

<b>Storage buffer</b>	pH: 7.20 Preservative: 0.01% Sodium azide Constituents: 9% PBS, 40% Glycerol (glycerin, glycerine), 0.05% BSA, 50% Tissue culture supernatant
<b>Purity</b>	Tissue culture supernatant
<b>Clonality</b>	Monoclonal
<b>Clone number</b>	EPR7163
<b>Isotype</b>	IgG

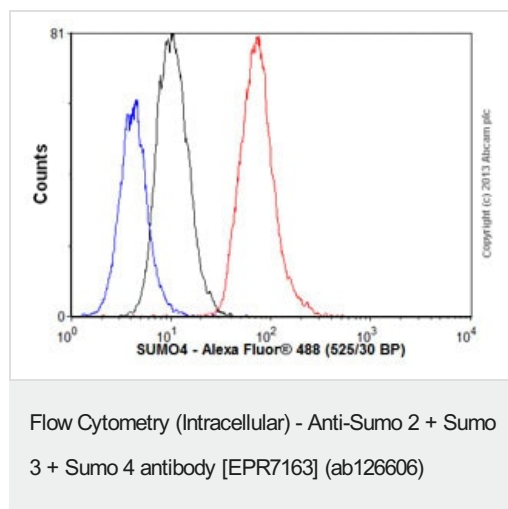
## Applications

**The Abpromise guarantee** Our **Abpromise guarantee** covers the use of ab126606 in the following tested applications. The application notes include recommended starting dilutions; optimal dilutions/concentrations should be determined by the end user.

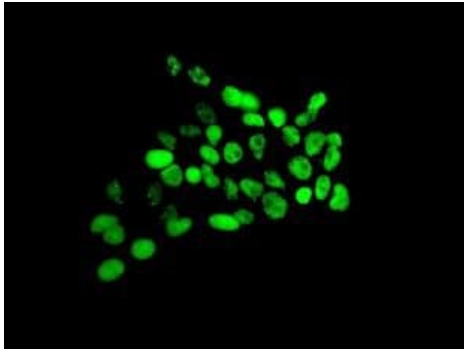
Application	Abreviews	Notes
<b>Flow Cyt (Intra)</b>		1/100 - 1/1000. <b>ab172730</b> - Rabbit monoclonal IgG, is suitable for use as an isotype control with this antibody.
<b>WB</b>		1/10000 - 1/50000. Detects a band of approximately 15 kDa (predicted molecular weight: 11 kDa).
<b>ICC/IF</b>		1/250 - 1/500.

**Application notes** Is unsuitable for IHC-P.

## Images

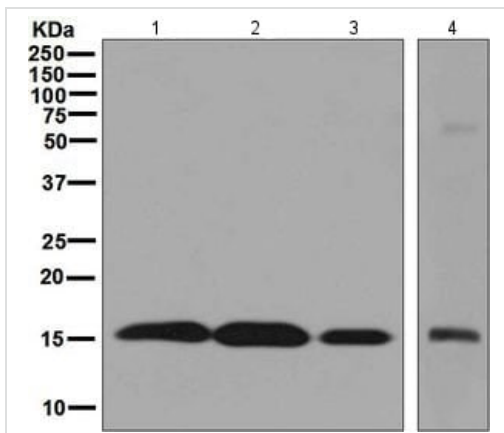


Overlay histogram showing HEK293 cells stained with ab126606 (red line). The cells were fixed with 80% methanol (5 min) and then permeabilized with 0.1% PBS-Tween for 20 min. The cells were then incubated in 1x PBS / 10% normal goat serum / 0.3M glycine to block non-specific protein-protein interactions followed by the antibody (ab126606, 1/1000 dilution) for 30 min at 22°C. The secondary antibody used was Alexa Fluor® 488 goat anti-rabbit IgG (H&L) (**ab150077**) at 1/2000 dilution for 30 min at 22°C. Isotype control antibody (black line) was rabbit IgG (monoclonal) (0.1µg/1x10<sup>6</sup> cells) used under the same conditions. Unlabelled sample (blue line) was also used as a control. Acquisition of >5,000 events were collected using a 20mW Argon ion laser (488nm) and 525/30 bandpass filter.



Immunocytochemistry/ Immunofluorescence - Anti-Sumo 2 + Sumo 3 + Sumo 4 antibody [EPR7163] (ab126606)

ab126606 at 1/250 dilution staining Sumo 2 + Sumo 3 + Sumo 4 in HepG2 (Human liver hepatocellular carcinoma cell line) cells by immunofluorescence.



Western blot - Anti-Sumo 2 + Sumo 3 + Sumo 4 antibody [EPR7163] (ab126606)

**All lanes :** Anti-Sumo 2 + Sumo 3 + Sumo 4 antibody [EPR7163] (ab126606) at 1/10000 dilution

**Lane 1 :** HepG2 cell lysate

**Lane 2 :** 293T cell lysate

**Lane 3 :** Jurkat cell lysate

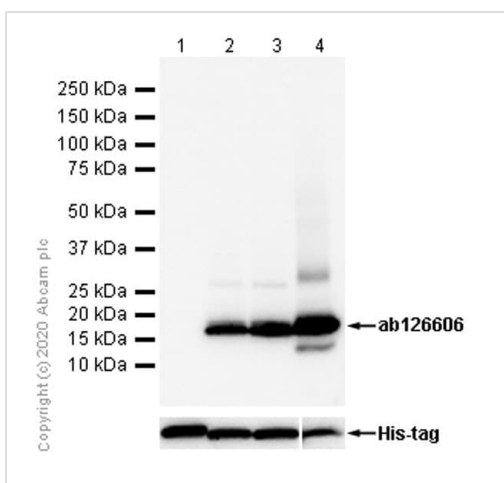
**Lane 4 :** Human spleen tissue lysate

Lysates/proteins at 10 µg per lane.

### Secondary

**All lanes :** Goat anti-Rabbit HRP at 1/2000 dilution

**Predicted band size:** 11 kDa



Western blot - Anti-Sumo 2 + Sumo 3 + Sumo 4 antibody [EPR7163] (ab126606)

**All lanes :** Anti-Sumo 2 + Sumo 3 + Sumo 4 antibody [EPR7163] (ab126606) at 1/5000 dilution

**Lane 1 :** Recombinant Human Sumo 1 protein ([ab140417](#)) at 0.01 µg

**Lane 2 :** Recombinant Human Sumo 2 protein ([ab140420](#)) at 0.01 µg

**Lane 3 :** Recombinant Human Sumo 3 protein ([ab140414](#)) at 0.01 µg

**Lane 4 :** Recombinant Human Sumo 4 protein ([ab157025](#)) at 0.1 µg

### Secondary

**All lanes :** Goat Anti-Rabbit IgG H&L (HRP) ([ab97051](#)) at 1/20000 dilution

Developed using the ECL technique.

**Predicted band size:** 11 kDa

**Observed band size:** 16 kDa

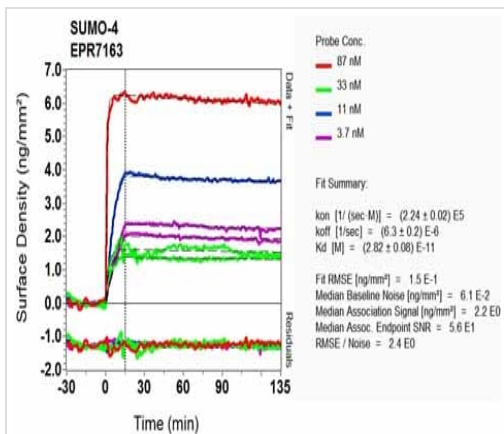
**Exposure time:** 3 seconds

**Blocking buffer:** 5% NFDm/TBST

Equilibrium dissociation constant ( $K_D$ )

Learn more about  $K_D$

[Click here to learn more about  \$K\_D\$](#)



OI-RD Scanning - Anti-Sumo 2 + Sumo 3 + Sumo 4  
antibody [EPR7163] (ab126606)

Why choose a  
recombinant antibody?



**Research with  
confidence**  
Consistent and  
reproducible results



**Long-term and  
scalable supply**  
Recombinant  
technology



**Success from the  
first experiment**  
Confirmed  
specificity



**Ethical standards  
compliant**  
Animal-free  
production

Anti-Sumo 2 + Sumo 3 + Sumo 4 antibody  
[EPR7163] (ab126606)

**Please note:** All products are "FOR RESEARCH USE ONLY. NOT FOR USE IN DIAGNOSTIC PROCEDURES"

### **Our Abpromise to you: Quality guaranteed and expert technical support**

---

- Replacement or refund for products not performing as stated on the datasheet
- Valid for 12 months from date of delivery
- Response to your inquiry within 24 hours
- We provide support in Chinese, English, French, German, Japanese and Spanish
- Extensive multi-media technical resources to help you
- We investigate all quality concerns to ensure our products perform to the highest standards

If the product does not perform as described on this datasheet, we will offer a refund or replacement. For full details of the Abpromise, please visit <https://www.abcam.com/abpromise> or contact our technical team.

### **Terms and conditions**

---

- Guarantee only valid for products bought direct from Abcam or one of our authorized distributors