

## Product datasheet

### Anti-SUN1 antibody [EPR6554] $\alpha$ b124770

Recombinant **RabMAb**

★★★★★ **6 Abreviews** **12 References** [4 Images](#)

#### Overview

<b>Product name</b>	Anti-SUN1 antibody [EPR6554]
<b>Description</b>	Rabbit monoclonal [EPR6554] to SUN1
<b>Host species</b>	Rabbit
<b>Tested applications</b>	<b>Suitable for:</b> WB, IHC-P <b>Unsuitable for:</b> Flow Cyt, ICC/IF or IP
<b>Species reactivity</b>	<b>Reacts with:</b> Human <b>Does not react with:</b> Mouse, Rat
<b>Immunogen</b>	Synthetic peptide corresponding to Human SUN1 aa 100-200.
<b>Positive control</b>	IHC-P: Human ovary carcinoma and human breast tissues.
<b>General notes</b>	This product is a recombinant monoclonal antibody, which offers several advantages including: <ul style="list-style-type: none"> <li>- High batch-to-batch consistency and reproducibility</li> <li>- Improved sensitivity and specificity</li> <li>- Long-term security of supply</li> <li>- Animal-free production</li> </ul> For more information <a href="#">see here</a> . Our RabMAb <sup>®</sup> technology is a patented hybridoma-based technology for making rabbit monoclonal antibodies. For details on our patents, please refer to <a href="#">RabMAb<sup>®</sup> patents</a> .

#### Properties

<b>Form</b>	Liquid
<b>Storage instructions</b>	Shipped at 4°C. Store at -20°C. Stable for 12 months at -20°C.
<b>Storage buffer</b>	pH: 7.20 Preservative: 0.01% Sodium azide Constituents: PBS, 40% Glycerol, 0.05% BSA
<b>Purity</b>	Protein A purified
<b>Clonality</b>	Monoclonal
<b>Clone number</b>	EPR6554
<b>Isotype</b>	IgG

## Applications

### The Abpromise guarantee

Our [Abpromise guarantee](#) covers the use of ab124770 in the following tested applications.

The application notes include recommended starting dilutions; optimal dilutions/concentrations should be determined by the end user.

Application	Abreviews	Notes
WB	★★★★★ (4)	1/1000 - 1/10000. Detects a band of approximately 78-100 kDa (predicted molecular weight: 90 kDa).
IHC-P		1/100 - 1/250. Perform heat mediated antigen retrieval before commencing with IHC staining protocol. Heat up to 98°C, below boiling, and then let cool for 10-20 min. See <a href="#">IHC antigen retrieval protocols</a> .

### Application notes

Is unsuitable for Flow Cyt, ICC/IF or IP.

## Target

### Function

Component of SUN-protein-containing multivariate complexes also called LINC complexes which link the nucleoskeleton and cytoskeleton by providing versatile outer nuclear membrane attachment sites for cytoskeletal filaments. Required for interkinetic nuclear migration (INM) and essential for nucleokinesis and centrosome-nucleus coupling during radial neuronal migration in the cerebral cortex and during glial migration. Anchors chromosome movement in the prophase of meiosis and is involved in selective gene expression of coding and non-coding RNAs needed for gametogenesis. Required for telomere attachment to nuclear envelope and gametogenesis. Helps to define the distribution of nuclear pore complexes (NPCs).

### Sequence similarities

Contains 1 SUN domain.

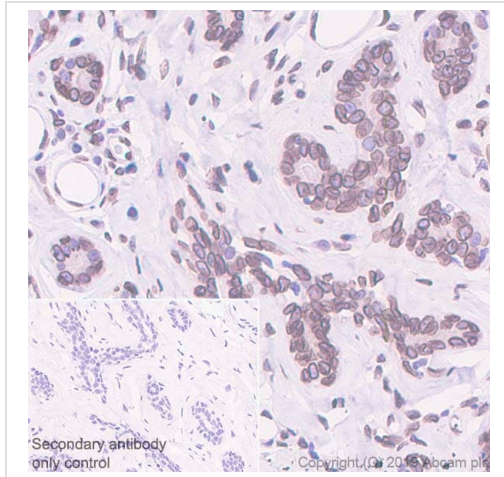
### Domain

The SUN domain may play a role in the nuclear anchoring and/or migration.

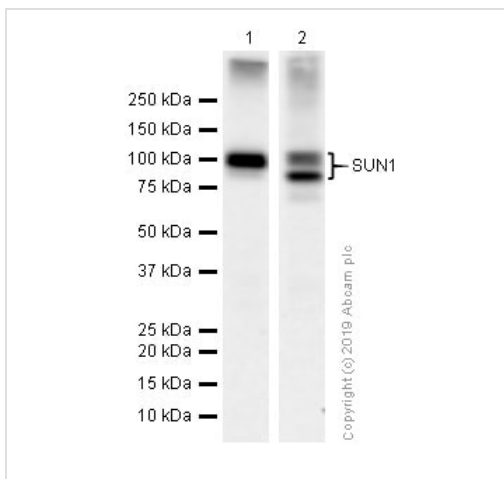
### Cellular localization

Nucleus inner membrane.

## Images



Immunohistochemistry (Formalin/PFA-fixed paraffin-embedded sections) - Anti-SUN1 antibody [EPR6554] (ab124770)



Western blot - Anti-SUN1 antibody [EPR6554] (ab124770)

Immunohistochemistry (Formalin/PFA-fixed paraffin-embedded sections) analysis of human breast tissue sections labeling SUN1 with purified ab124770 at 1/200 dilution (0.698 µg/ml). Perform heat mediated antigen retrieval using Citrate buffer, pH 6.0. ImmunoHistoProbe one step HRP Polymer (ready to use) was used as the secondary antibody. Negative control: PBS instead of the primary antibody. Hematoxylin was used as a counterstain.

**All lanes :** Anti-SUN1 antibody [EPR6554] (ab124770) at 1/5000 dilution (Purified)

**Lane 1 :** HeLa (Human cervix adenocarcinoma epithelial cell) whole cell lysates at 15 µg

**Lane 2 :** HepG2 (Human hepatocellular carcinoma epithelial cell) whole cell lysates at 15 µg

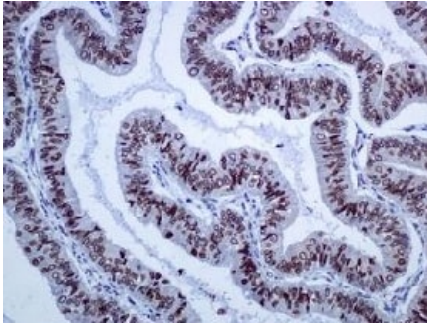
#### Secondary

**All lanes :** Goat Anti-Rabbit IgG H&L (HRP) ([ab97051](#)) at 1/20000 dilution

**Predicted band size:** 90 kDa

**Observed band size:** 100,90 kDa

The bands observed are consistent with what has been described in PMID: 16648470



Immunohistochemistry (Formalin/PFA-fixed paraffin-embedded sections) - Anti-SUN1 antibody [EPR6554] (ab124770)

Unpurified ab124770, at 1/100 dilution, staining SUN1 in paraffin-embedded Human ovary carcinoma tissue by Immunohistochemistry.

Perform heat mediated antigen retrieval before commencing with IHC staining protocol.

#### Why choose a recombinant antibody?



Anti-SUN1 antibody [EPR6554] (ab124770)

**Please note:** All products are "FOR RESEARCH USE ONLY. NOT FOR USE IN DIAGNOSTIC PROCEDURES"

#### Our Abpromise to you: Quality guaranteed and expert technical support

- Replacement or refund for products not performing as stated on the datasheet
- Valid for 12 months from date of delivery
- Response to your inquiry within 24 hours
- We provide support in Chinese, English, French, German, Japanese and Spanish
- Extensive multi-media technical resources to help you
- We investigate all quality concerns to ensure our products perform to the highest standards

If the product does not perform as described on this datasheet, we will offer a refund or replacement. For full details of the Abpromise, please visit <https://www.abcam.com/abpromise> or contact our technical team.

#### Terms and conditions

- Guarantee only valid for products bought direct from Abcam or one of our authorized distributors