

Product datasheet

Anti-Superoxide Dismutase 3/EC-SOD antibody ab90258

[1 References](#) [1 Image](#)

Overview

Product name	Anti-Superoxide Dismutase 3/EC-SOD antibody
Description	Rabbit polyclonal to Superoxide Dismutase 3/EC-SOD
Host species	Rabbit
Tested applications	Suitable for: WB
Species reactivity	Reacts with: Human
Immunogen	Synthetic peptide. This information is proprietary to Abcam and/or its suppliers.
Positive control	This antibody gave a positive signal in the following human tissue lysates: Artery; Heart; Lung; Kidney.
General notes	<p>The Life Science industry has been in the grips of a reproducibility crisis for a number of years. Abcam is leading the way in addressing this with our range of recombinant monoclonal antibodies and knockout edited cell lines for gold-standard validation. Please check that this product meets your needs before purchasing.</p> <p>If you have any questions, special requirements or concerns, please send us an inquiry and/or contact our Support team ahead of purchase. Recommended alternatives for this product can be found below, along with publications, customer reviews and Q&As</p>

Properties

Form	Liquid
Storage instructions	Shipped at 4°C. Store at +4°C short term (1-2 weeks). Upon delivery aliquot. Store at -20°C or -80°C. Avoid freeze / thaw cycle.
Storage buffer	<p>pH: 7.40</p> <p>Preservative: 0.02% Sodium azide</p> <p>Constituent: PBS</p> <p>Batches of this product that have a concentration < 1mg/ml may have BSA added as a stabilising agent. If you would like information about the formulation of a specific lot, please contact our scientific support team who will be happy to help.</p>
Purity	Immunogen affinity purified
Clonality	Polyclonal

Isotype

IgG

Applications

The Abpromise guarantee

Our **Abpromise guarantee** covers the use of ab90258 in the following tested applications.

The application notes include recommended starting dilutions; optimal dilutions/concentrations should be determined by the end user.

Application	Abreviews	Notes
WB		Use a concentration of 1 µg/ml. Detects a band of approximately 32 kDa (predicted molecular weight: 26 kDa).

Target

Function

Protect the extracellular space from toxic effect of reactive oxygen intermediates by converting superoxide radicals into hydrogen peroxide and oxygen.

Tissue specificity

Expressed in blood vessels, heart, lung, kidney and placenta. Major SOD isoenzyme in extracellular fluids such as plasma, lymph and synovial fluid.

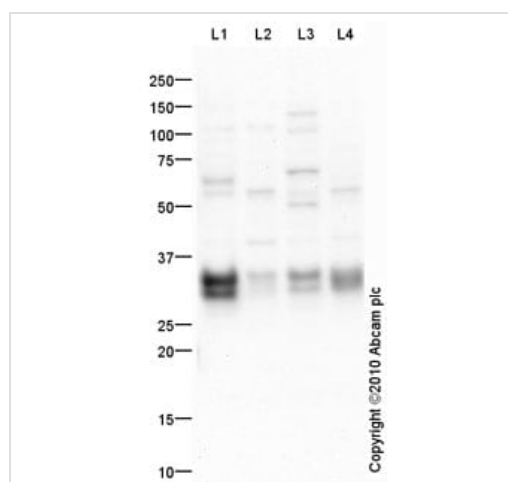
Sequence similarities

Belongs to the Cu-Zn superoxide dismutase family.

Cellular localization

Secreted > extracellular space. 99% of EC-SOD is anchored to heparan sulfate proteoglycans in the tissue interstitium, and 1% is located in the vasculature in equilibrium between the plasma and the endothelium.

Images



Western blot - Anti-Superoxide Dismutase 3/EC-SOD antibody (ab90258)

All lanes : Anti-Superoxide Dismutase 3/EC-SOD antibody (ab90258) at 1 µg/ml

Lane 1 : Human blood vessel: artery normal tissue lysate - membrane extract (**ab28989**)

Lane 2 : Human heart tissue lysate - total protein (**ab29431**)

Lane 3 : Lung (Human) Tissue Lysate

Lane 4 : Human kidney tissue lysate - total protein (**ab30203**)

Lysates/proteins at 10 µg per lane.

Secondary

All lanes : Goat Anti-Rabbit IgG H&L (HRP) preadsorbed (**ab97080**) at 1/5000 dilution

Developed using the ECL technique.

Performed under reducing conditions.

Predicted band size: 26 kDa

Observed band size: 32,35 kDa

Additional bands at: 110 kDa, 42 kDa, 50 kDa, 55 kDa, 60 kDa.

We are unsure as to the identity of these extra bands.

Exposure time: 4 minutes

Superoxide dismutase 3 / EC-SOD contains a number of potential glycosylation sites (SwissProt), which may explain the migration pattern observed.

Please note: All products are "FOR RESEARCH USE ONLY. NOT FOR USE IN DIAGNOSTIC PROCEDURES"

Our Abpromise to you: Quality guaranteed and expert technical support

- Replacement or refund for products not performing as stated on the datasheet
- Valid for 12 months from date of delivery
- Response to your inquiry within 24 hours
- We provide support in Chinese, English, French, German, Japanese and Spanish
- Extensive multi-media technical resources to help you
- We investigate all quality concerns to ensure our products perform to the highest standards

If the product does not perform as described on this datasheet, we will offer a refund or replacement. For full details of the Abpromise, please visit <https://www.abcam.com/abpromise> or contact our technical team.

Terms and conditions

- Guarantee only valid for products bought direct from Abcam or one of our authorized distributors