

Product datasheet

Anti-Supervillin antibody ab254629

4 Images

Overview

Product name	Anti-Supervillin antibody
Description	Rabbit polyclonal to Supervillin
Host species	Rabbit
Tested applications	Suitable for: ICC/IF, IHC-P
Species reactivity	Reacts with: Human
Immunogen	Recombinant fragment corresponding to Human Supervillin aa 800-1000. Database link: O95425
	Run BLAST with Run BLAST with
Positive control	IHC-P: Human skeletal muscle, prostate and heart tissue. ICC/IF: A431 cells. WB: A431 cell lysate.
General notes	<p>The Life Science industry has been in the grips of a reproducibility crisis for a number of years. Abcam is leading the way in addressing this with our range of recombinant monoclonal antibodies and knockout edited cell lines for gold-standard validation. Please check that this product meets your needs before purchasing.</p> <p>If you have any questions, special requirements or concerns, please send us an inquiry and/or contact our Support team ahead of purchase. Recommended alternatives for this product can be found below, along with publications, customer reviews and Q&As</p>

Properties

Form	Liquid
Storage instructions	Shipped at 4°C. Store at +4°C short term (1-2 weeks). Upon delivery aliquot. Store at -20°C long term. Avoid freeze / thaw cycle.
Storage buffer	pH: 7.20 Preservative: 0.02% Sodium azide Constituents: 40% Glycerol (glycerin, glycerine), PBS
Purity	Immunogen affinity purified
Clonality	Polyclonal
Isotype	IgG

Applications

The Abpromise guarantee Our **Abpromise guarantee** covers the use of ab254629 in the following tested applications.

The application notes include recommended starting dilutions; optimal dilutions/concentrations should be determined by the end user.

Application	Abreviews	Notes
ICC/IF		Use a concentration of 0.25 - 2 µg/ml. Fixation/Permeabilization: PFA/Triton X-100
IHC-P		1/200 - 1/500. Perform heat mediated antigen retrieval with citrate buffer pH 6 before commencing with IHC staining protocol.

Target

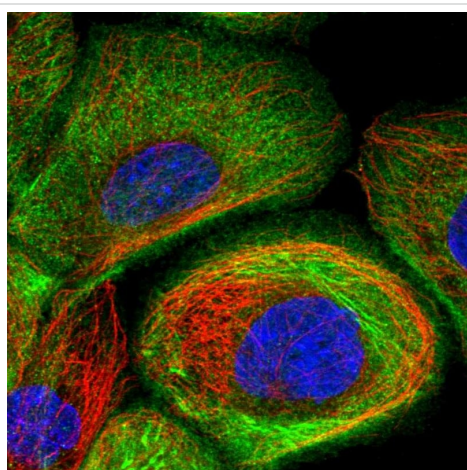
Relevance

Supervillin is an F-actin-binding protein originally with two reported isoforms of 205/250 kDa. The longer isoform, named archvillin, is muscle-specific. Supervillin is a tightly bound peripheral membrane protein that is concentrated at sites of epithelial cell-cell adhesion. It contributes to cell-cell adhesion, motility regulation, and information transfer between cell compartments. The COOH-terminus of supervillin is homologous to villin/gelsolin but is not responsible for the tight binding to the actin cytoskeleton in vivo. The NH2-terminus contains functional nuclear localization sequences and F-actin and myosin II binding domains. It has been suggested that supervillin may mediate actin and myosin II filament organization at cholesterol-rich membrane domains. Supervillin has been identified as a transcriptional activator of the androgen receptor. Supervillin is found in many cells of several species, but is most abundant in muscle, bone marrow, thyroid gland, and salivary gland.

Cellular localization

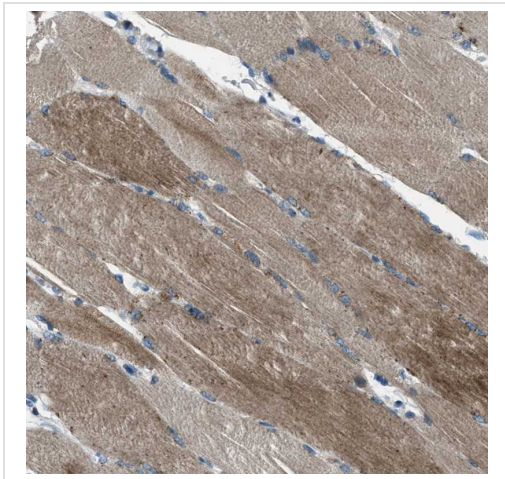
Cell membrane; peripheral membrane protein; cytoplasmic side. Cytoplasm; cytoskeleton.

Images



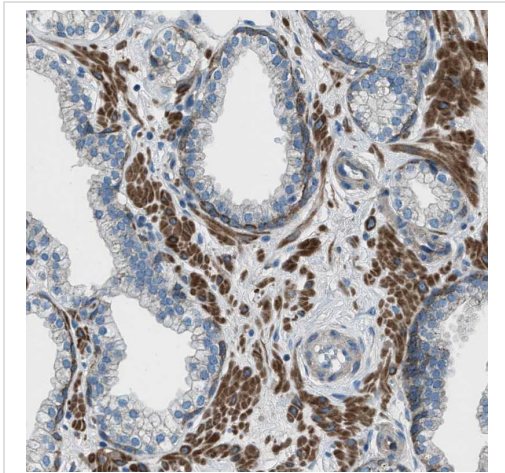
PFA fixed, Triton X-100 permeabilized A-431 (Human epidermoid carcinoma cell line) cells labeling Supervillin using ab254629 at 4µg/ml (green) in ICC/IF.

Immunocytochemistry/ Immunofluorescence - Anti-Supervillin antibody (ab254629)



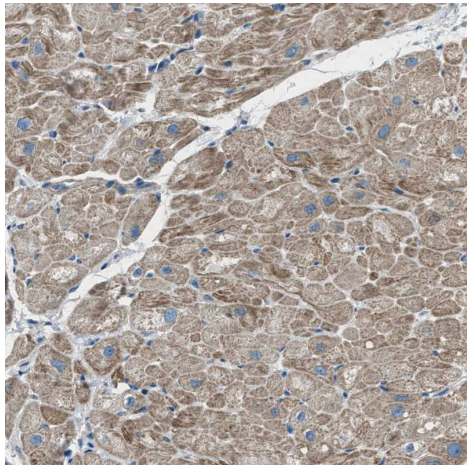
Paraffin-embedded human skeletal muscle tissue stained for Supervillin using ab254629 at 1/200 dilution in immunohistochemical analysis.

Immunohistochemistry (Formalin/PFA-fixed paraffin-embedded sections) - Anti-Supervillin antibody (ab254629)



Paraffin-embedded human prostate tissue stained for Supervillin using ab254629 at 1/200 dilution in immunohistochemical analysis.

Immunohistochemistry (Formalin/PFA-fixed paraffin-embedded sections) - Anti-Supervillin antibody (ab254629)



Paraffin-embedded human heart tissue stained for Supervillin using ab254629 at 1/200 dilution in immunohistochemical analysis.

Immunohistochemistry (Formalin/PFA-fixed paraffin-embedded sections) - Anti-Supervillin antibody (ab254629)

Please note: All products are "FOR RESEARCH USE ONLY. NOT FOR USE IN DIAGNOSTIC PROCEDURES"

Our Abpromise to you: Quality guaranteed and expert technical support

- Replacement or refund for products not performing as stated on the datasheet
- Valid for 12 months from date of delivery
- Response to your inquiry within 24 hours
- We provide support in Chinese, English, French, German, Japanese and Spanish
- Extensive multi-media technical resources to help you
- We investigate all quality concerns to ensure our products perform to the highest standards

If the product does not perform as described on this datasheet, we will offer a refund or replacement. For full details of the Abpromise, please visit <https://www.abcam.com/abpromise> or contact our technical team.

Terms and conditions

- Guarantee only valid for products bought direct from Abcam or one of our authorized distributors