




Product datasheet

SureLight® APC Anti-PGE2 receptor EP4 subtype antibody ab92763

[3 References](#) [1 Image](#)

Overview

Product name	SureLight® APC Anti-PGE2 receptor EP4 subtype antibody
Description	SureLight® APC Rabbit polyclonal to PGE2 receptor EP4 subtype
Host species	Rabbit
Conjugation	SureLight® APC. Ex: 652nm, Em: 657nm
Specificity	ab92763 is reactive with EP4 receptor and non-reactive with EP1, EP2, and EP3 receptors.
Tested applications	Suitable for: ICC/IF
Species reactivity	Reacts with: Human Predicted to work with: Rabbit, Cow, Chimpanzee, Cynomolgus monkey 
Immunogen	Synthetic peptide corresponding to Human PGE2 receptor EP4 subtype aa 459-488 (C terminal). Sequence: GSGRAGPAPKGSSLQVTFPSETLNLSEKCI  Run BLAST with  Run BLAST with

General notes

The Life Science industry has been in the grips of a reproducibility crisis for a number of years. Abcam is leading the way in addressing this with our range of recombinant monoclonal antibodies and knockout edited cell lines for gold-standard validation. Please check that this product meets your needs before purchasing.

If you have any questions, special requirements or concerns, please send us an inquiry and/or contact our Support team ahead of purchase. Recommended alternatives for this product can be found below, along with publications, customer reviews and Q&As

Properties

Form	Liquid
Storage instructions	Shipped at 4°C. Store at +4°C. Store In the Dark.
Storage buffer	pH: 7.20 Preservative: 0.013% Sodium azide Constituents: 1.64% Sodium phosphate, 0.58% Sodium chloride
Purity	Immunogen affinity purified
Clonality	Polyclonal

Isotype

IgG

Applications

The Abpromise guarantee

Our **Abpromise guarantee** covers the use of ab92763 in the following tested applications.

The application notes include recommended starting dilutions; optimal dilutions/concentrations should be determined by the end user.

Application	Abreviews	Notes
ICC/IF		Use a concentration of 5 µg/ml.

Target

Function

Receptor for prostaglandin E2 (PGE2). The activity of this receptor is mediated by G(s) proteins that stimulate adenylate cyclase. Has a relaxing effect on smooth muscle. May play an important role in regulating renal hemodynamics, intestinal epithelial transport, adrenal aldosterone secretion, and uterine function.

Tissue specificity

High in intestine and in peripheral blood mononuclear cells; low in lung, kidney, thymus, uterus, vasculature and brain. Not found in liver, heart, retina or skeletal muscle.

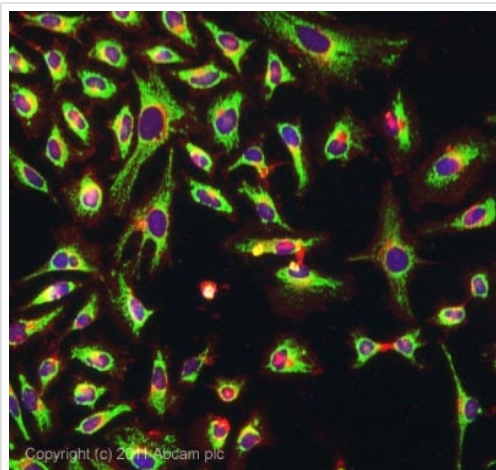
Sequence similarities

Belongs to the G-protein coupled receptor 1 family.

Cellular localization

Cell membrane.

Images



ICC/IF image of ab92763 stained HeLa cells. The cells were 4% formaldehyde fixed (10 min) and then incubated in 1% BSA / 10% normal goat serum / 0.3M glycine in 0.1% PBS-Tween for 1h to permeabilise the cells and block non-specific protein-protein interactions. The cells were then incubated with the antibody (ab92763, 5µg/ml) overnight at +4°C. The secondary antibody (green) was **ab96899**, DyLight® 488 goat anti-rabbit IgG (H+L) used at a 1/250 dilution for 1h. Alexa Fluor® 594 WGA was used to label plasma membranes (red) at a 1/200 dilution for 1h. DAPI was used to stain the cell nuclei (blue) at a concentration of 1.43µM.

Immunocytochemistry/ Immunofluorescence -
SureLight® APC Anti-PGE2 receptor EP4 subtype
antibody (ab92763)

Please note: All products are "FOR RESEARCH USE ONLY. NOT FOR USE IN DIAGNOSTIC PROCEDURES"

Our Abpromise to you: Quality guaranteed and expert technical support

- Replacement or refund for products not performing as stated on the datasheet
- Valid for 12 months from date of delivery
- Response to your inquiry within 24 hours

- We provide support in Chinese, English, French, German, Japanese and Spanish
- Extensive multi-media technical resources to help you
- We investigate all quality concerns to ensure our products perform to the highest standards

If the product does not perform as described on this datasheet, we will offer a refund or replacement. For full details of the Abpromise, please visit <https://www.abcam.com/abpromise> or contact our technical team.

Terms and conditions

- Guarantee only valid for products bought direct from Abcam or one of our authorized distributors